

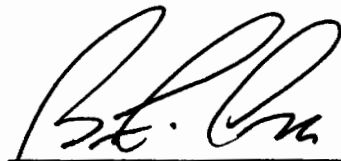


**CITY OF REDDING  
CERTIFIED EXTENSION  
OF  
ENGINEERING AND TRAFFIC SURVEY  
FOR  
AIRPARK DRIVE**

**For the determination of safe and reasonable speed zoning as required by Sections 22358 and 40802 of the California Vehicle Code (CVC), as defined by Section 627 of the CVC and in accordance with Section 2B. 13 of the California Manual on Uniform Traffic Control Devices, this Engineering and Traffic Survey (ETS) was initiated to verify or modify speed zones on Airpark Drive.**

**Based on the results of this ETS (attached) and adoption of Ordinance Number 2465 by the City Council of the City of Redding, amending Redding Municipal Code Section 11.12.010, a speed zone on Airpark Drive of 35 MPH from Placer Street to Rosaline Avenue is established.**

**This ETS was reviewed by a Registered Engineer and no significant changes in roadway or traffic conditions have occurred, including, but not limited to, changes in adjoining property or land use, roadway width, or traffic volume since the original study date of preparation and is found to be in compliance with CVC 40802, valid until March 31, 2014.**

 3/26/2012

**Brian Crane, P. E.  
Director of Public Works**

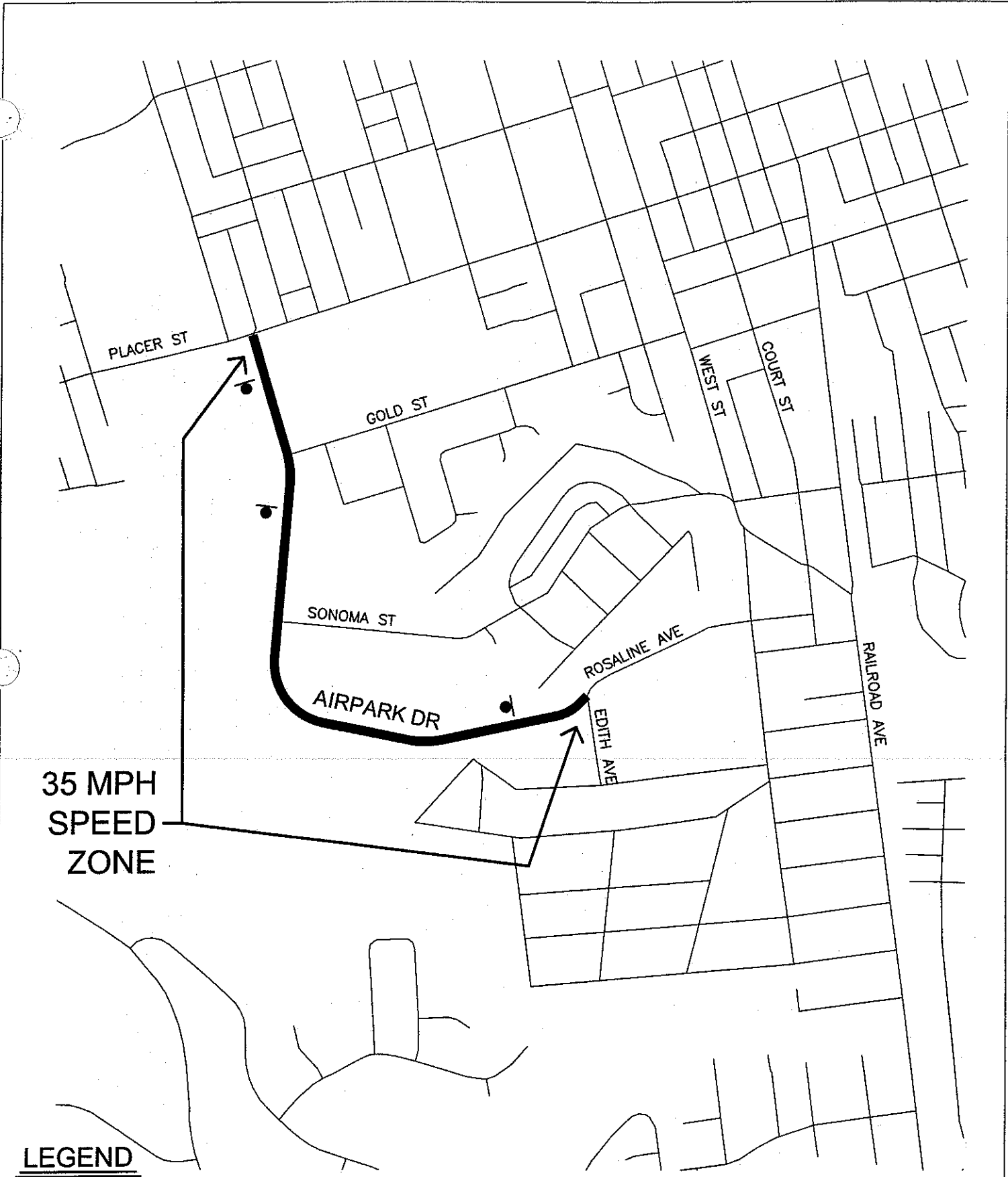
**ATTEST:**

 3/26/12  
**PAMELA MIZE, City Clerk**

**AIRPARK DRIVE  
MARCH 2004  
CONDITION SUMMARY**

FROM	PLACER	
LOCATION		
TO	ROSALINE	
NO. OF LANES	2	
WIDTH	40'	
ROADWAY		
LENGTH	4,515	
HORIZONTAL	CURVES	
ALIGNMENT		
VERTICAL	FLAT	
DISTRICT	BUSINESS	
ADT	3,835	
PEDESTRIANS	FEW	
SIDEWALKS	65%	
DRIVEWAYS	SEVERAL	
SPEED RELATED ACCIDENTS	NONE	
EXISTING SPEED ZONE	25 MPH	
BALL BANK SPEED	N/A	
85TH% SPEED	40 MPH	
<b>SURVEY CONCLUSION</b>		
REASONABLE SPEED	35 MPH	
<b>ACTION</b>		
CITY COUNCIL APPROVED	CITY ORDINANCE 2011	
SIGNS POSTED	10/04	

**ADDITIONAL  
COMMENTS:**



**35 MPH  
SPEED  
ZONE**

**LEGEND**

● SPEED LIMIT SIGN

CITY OF REDDING MUNICIPAL UTILITIES TRAFFIC OPERATIONS



**AIRPARK DR SPEED STUDY**

**PLACER ST TO ROSALINE AVE**



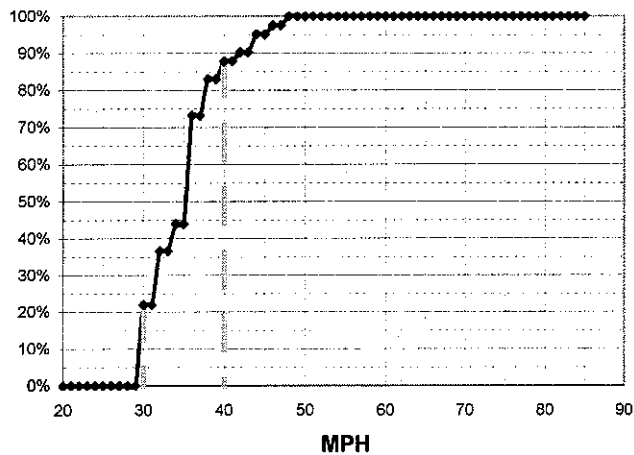
**AIRPARK DR S/ GOLD ST**

Observer: Lori Lackey

Calcs: Frank Hogue

Critical Speed :	40	mph
Average Speed :	35.4	mph
Median Speed :	36	mph
Standard Deviation:	4.6	mph
Pace Range :	30 - 40	mph
Percent in Pace :	82.9%	
Total # Vehicles :	41	

MPH	# of Veh.	Northbound	%
85			100.0%
84			100.0%
83			100.0%
82			100.0%
81			100.0%
80			100.0%
79			100.0%
78			100.0%
77			100.0%
76			100.0%
75			100.0%
74			100.0%
73			100.0%
72			100.0%
71			100.0%
70			100.0%
69			100.0%
68			100.0%
67			100.0%
66			100.0%
65			100.0%
64			100.0%
63			100.0%
62			100.0%
61			100.0%
60			100.0%
59			100.0%
58			100.0%
57			100.0%
56			100.0%
55			100.0%
54			100.0%
53			100.0%
52			100.0%
51			100.0%
50			100.0%
49			100.0%
48	1	◆	100.0%
47	1	◆	97.6%
46	1	◆	97.6%
45			95.1%
44	2	◆◆	95.1%
43			90.2%
42	1	◆	90.2%
41			87.8%
40	2	◆◆	87.8%
39			82.9%
38	4	◆◆◆◆	82.9%
37			73.2%
36	12	◆◆◆◆◆◆◆◆◆◆◆◆	73.2%
35			43.9%
34	3	◆◆◆	43.9%
33			36.6%
32	6	◆◆◆◆◆◆	36.6%
31			22.0%
30	9	◆◆◆◆◆◆◆◆◆	22.0%
29			0.0%
28			0.0%
27			0.0%
26			0.0%
25			0.0%
24			0.0%
23			0.0%
22			0.0%
21			0.0%
20			0.0%

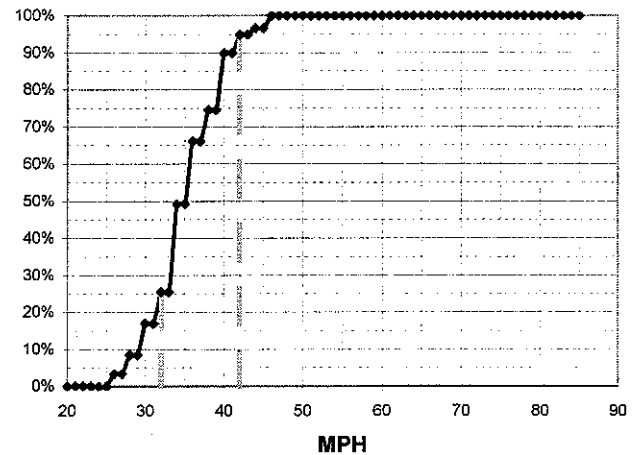


Day: Wednesday  
Date: 8/27/03  
Time: 09:45 - 10:25

Posted Speed: 25  
Weather: Sunny & Dry

Critical Speed :	40	mph
Average Speed :	35.5	mph
Median Speed :	36	mph
Standard Deviation:	4.6	mph
Pace Range :	32 - 42	mph
Percent in Pace :	72.9%	
Total # Vehicles :	59	

MPH	No of Veh.	Southbound	%
85			100.0%
84			100.0%
83			100.0%
82			100.0%
81			100.0%
80			100.0%
79			100.0%
78			100.0%
77			100.0%
76			100.0%
75			100.0%
74			100.0%
73			100.0%
72			100.0%
71			100.0%
70			100.0%
69			100.0%
68			100.0%
67			100.0%
66			100.0%
65			100.0%
64			100.0%
63			100.0%
62			100.0%
61			100.0%
60			100.0%
59			100.0%
58			100.0%
57			100.0%
56			100.0%
55			100.0%
54			100.0%
53			100.0%
52			100.0%
51			100.0%
50			100.0%
49			100.0%
48			100.0%
47			100.0%
46	2	◆◆	100.0%
45			96.6%
44	1	◆	96.6%
43			94.9%
42	3	◆◆◆	94.9%
41			89.8%
40	9	◆◆◆◆◆◆◆◆◆	89.8%
39			74.6%
38	5	◆◆◆◆◆	74.6%
37			66.1%
36	10	◆◆◆◆◆◆◆◆◆◆	66.1%
35			49.2%
34	14	◆◆◆◆◆◆◆◆◆◆◆◆◆◆	49.2%
33			25.4%
32	5	◆◆◆◆◆	25.4%
31			16.9%
30	5	◆◆◆◆◆	16.9%
29			8.5%
28	3	◆◆◆	8.5%
27			3.4%
26	2	◆◆	3.4%
25			0.0%
24			0.0%
23			0.0%
22			0.0%
21			0.0%
20			0.0%



**AIRPARK DR W/ ROSALINE AVE**

Day **Wednesday**

Posted Speed: 25  
Weather: Sunny & Dry

Date: **8/27/03**  
Time: **10:30 - 11:05**

Observer: Lori Lackey

Calcs: Frank Hogue

MPH	# of Veh.	Eastbound	%
85			100.0%
84			100.0%
83			100.0%
82			100.0%
81			100.0%
80			100.0%
79			100.0%
78			100.0%
77			100.0%
76			100.0%
75			100.0%
74			100.0%
73			100.0%
72			100.0%
71			100.0%
70			100.0%
69			100.0%
68			100.0%
67			100.0%
66			100.0%
65			100.0%
64			100.0%
63			100.0%
62			100.0%
61			100.0%
60			100.0%
59			100.0%
58			100.0%
57			100.0%
56			100.0%
55			100.0%
54			100.0%
53			100.0%
52			100.0%
51			100.0%
50			100.0%
49			100.0%
48			100.0%
47			100.0%
46			100.0%
45			100.0%
44			100.0%
43			100.0%
42	6	◆◆◆◆◆◆	100.0%
41			89.8%
40	8	◆◆◆◆◆◆◆◆	89.8%
39			76.3%
38	7	◆◆◆◆◆◆◆	76.3%
37			64.4%
36	8	◆◆◆◆◆◆◆◆	64.4%
35			50.8%
34	10	◆◆◆◆◆◆◆◆◆◆	50.8%
33			33.9%
32	6	◆◆◆◆◆◆	33.9%
31			23.7%
30	8	◆◆◆◆◆◆◆◆	23.7%
29			10.2%
28	4	◆◆◆◆	10.2%
27			3.4%
26			3.4%
25			3.4%
24	1	◆	3.4%
23			1.7%
22	1	◆	1.7%
21			0.0%
20			0.0%

MPH	No of Veh.	Westbound	%
85			100.0%
84			100.0%
83			100.0%
82			100.0%
81			100.0%
80			100.0%
79			100.0%
78			100.0%
77			100.0%
76			100.0%
75			100.0%
74			100.0%
73			100.0%
72			100.0%
71			100.0%
70			100.0%
69			100.0%
68			100.0%
67			100.0%
66			100.0%
65			100.0%
64			100.0%
63			100.0%
62			100.0%
61			100.0%
60			100.0%
59			100.0%
58			100.0%
57			100.0%
56			100.0%
55			100.0%
54			100.0%
53			100.0%
52			100.0%
51			100.0%
50			100.0%
49			100.0%
48			100.0%
47			100.0%
46	1	◆	100.0%
45			97.6%
44	1	◆	97.6%
43			95.1%
42	1	◆	95.1%
41			92.7%
40	2	◆◆	92.7%
39			87.8%
38	2	◆◆	87.8%
37			82.9%
36	8	◆◆◆◆◆◆◆◆	82.9%
35			63.4%
34	7	◆◆◆◆◆◆◆	63.4%
33			46.3%
32	11	◆◆◆◆◆◆◆◆◆◆	46.3%
31			19.5%
30	3	◆◆◆	19.5%
29			12.2%
28	2	◆◆	12.2%
27			7.3%
26	2	◆◆	7.3%
25			2.4%
24	1	◆	2.4%
23			0.0%
22			0.0%
21			0.0%
20			0.0%

