




**CITY OF REDDING  
CERTIFIED EXTENSION  
OF  
ENGINEERING AND TRAFFIC SURVEY  
FOR  
CEDARS ROAD**

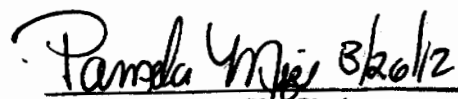
**For the determination of safe and reasonable speed zoning as required by Sections 22358 and 40802 of the California Vehicle Code (CVC), as defined by Section 627 of the CVC and in accordance with Section 2B. 13 of the California Manual on Uniform Traffic Control Devices, this Engineering and Traffic Survey (ETS) was initiated to verify or modify speed zones on Cedars Road.**

**Based on the results of this ETS (attached) and adoption of Ordinance Number 2465 by the City Council of the City of Redding, amending Redding Municipal Code Section 11.12.010, a speed zone on Cedars Road of 35 MPH from El Reno Lane to SR 273 is established.**

**This ETS was reviewed by a Registered Engineer and no significant changes in roadway or traffic conditions have occurred, including, but not limited to, changes in adjoining property or land use, roadway width, or traffic volume since the original study date of preparation and is found to be in compliance with CVC 40802, valid until March 31, 2014.**

 3/26/2012  
\_\_\_\_\_  
**Brian Crane, P. E.**  
**Director of Public Works**

ATTEST:

  
\_\_\_\_\_  
**PAMELA MIZE, City Clerk**

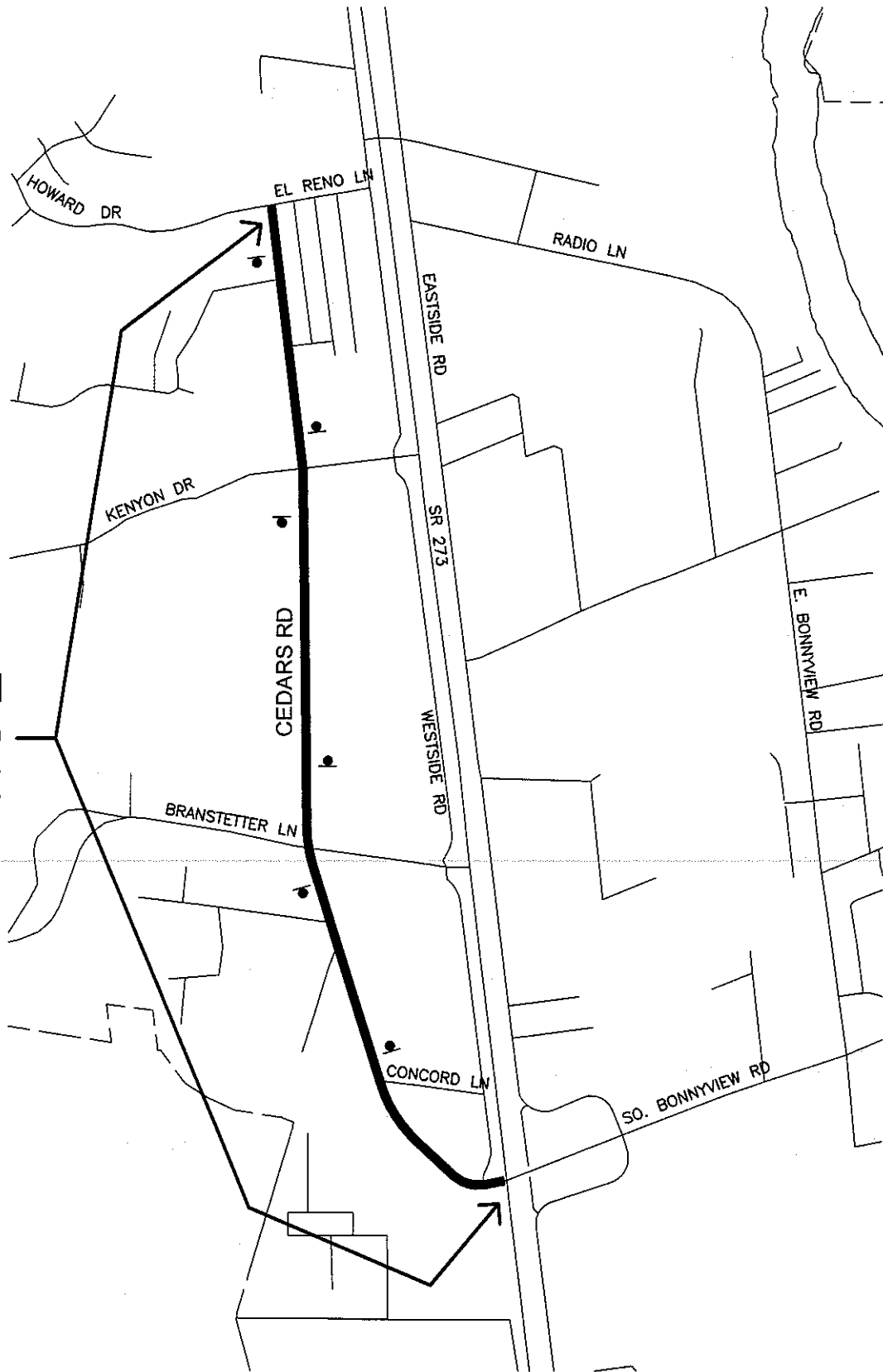
**CEDARS ROAD  
MARCH 2004  
CONDITION SUMMARY**

LOCATION	FROM EL RENO TO KENYON	KENYON  SR 273
NO. OF LANES	2	2
ROADWAY WIDTH	28'	28'
ROADWAY LENGTH	4,810	3,090
ALIGNMENT HORIZONTAL	STRAIGHT	GENTLE CURVE
ALIGNMENT VERTICAL	FLAT	FLAT
DISTRICT	RESIDENTIAL	RESIDENTIAL
ADT	1,470	1,806
PEDESTRIANS	SOME	SOME
SIDEWALKS	NONE	5%
DRIVEWAYS	SEVERAL	SEVERAL
SPEED RELATED ACCIDENTS	NONE	NOT SIGNIFICANT
EXISTING SPEED ZONE	35 MPH	35 MPH
BALL BANK SPEED	N/A	N/A
85TH% SPEED	42 MPH	42 MPH
<b>SURVEY CONCLUSION</b>		
REASONABLE SPEED	*35 MPH	*35 MPH
<b>ACTION</b>		
CITY COUNCIL APPROVED	CITY ORDINANCE 2011	CITY ORDINANCE 2011
SIGNS POSTED	1/9/89	1/9/89

**ADDITIONAL  
COMMENTS:**

**\* RESIDENTIAL DISTRICT AND NO  
SIDEWALKS**

35 MPH  
SPEED  
ZONE



**LEGEND**

● SPEED LIMIT SIGN

CITY OF REDDING MUNICIPAL UTILITIES TRAFFIC OPERATIONS



**CEDARS RD SPEED STUDY**  
EL RENO LN TO SR 273



**CEDARS RD N/ KENYON DR**

Day: Tuesday  
 Date: 9/9/03  
 Time: 08:45 - 09:45

Observer: Lori Lackey

Calcs: Frank Hogue

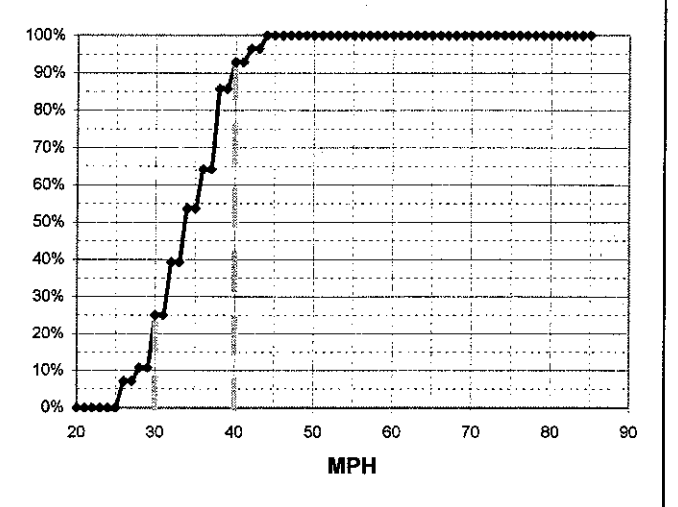
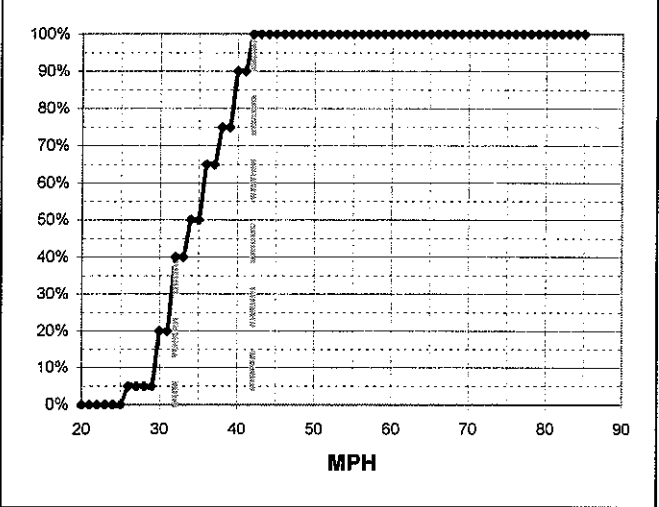
Posted Speed: 35  
 Weather: Overcast & Dry

Critical Speed :	<u>40</u>	<u>mph</u>
Average Speed :	<u>35.0</u>	<u>mph</u>
Median Speed :	<u>0</u>	<u>mph</u>
Standard Deviation:	<u>4.4</u>	<u>mph</u>
Pace Range :	<u>32 - 42</u>	<u>mph</u>
Percent in Pace :	<u>70.0%</u>	
Total # Vehicles :	<u>20</u>	

Critical Speed :	<u>38</u>	<u>mph</u>
Average Speed :	<u>34.5</u>	<u>mph</u>
Median Speed :	<u>34</u>	<u>mph</u>
Standard Deviation:	<u>4.6</u>	<u>mph</u>
Pace Range :	<u>30 - 40</u>	<u>mph</u>
Percent in Pace :	<u>75.0%</u>	
Total # Vehicles :	<u>28</u>	

MPH	# of Veh.	Northbound	%
85			100.0%
84			100.0%
83			100.0%
82			100.0%
81			100.0%
80			100.0%
79			100.0%
78			100.0%
77			100.0%
76			100.0%
75			100.0%
74			100.0%
73			100.0%
72			100.0%
71			100.0%
70			100.0%
69			100.0%
68			100.0%
67			100.0%
66			100.0%
65			100.0%
64			100.0%
63			100.0%
62			100.0%
61			100.0%
60			100.0%
59			100.0%
58			100.0%
57			100.0%
56			100.0%
55			100.0%
54			100.0%
53			100.0%
52			100.0%
51			100.0%
50			100.0%
49			100.0%
48			100.0%
47			100.0%
46			100.0%
45			100.0%
44			100.0%
43			100.0%
42	2	♦♦	100.0%
41	3	♦♦♦	90.0%
40	3	♦♦♦	90.0%
39	2	♦♦	75.0%
38	2	♦♦	75.0%
37	3	♦♦♦	65.0%
36	3	♦♦♦	65.0%
35			50.0%
34	2	♦♦	50.0%
33			40.0%
32	4	♦♦♦♦	40.0%
31			20.0%
30	3	♦♦♦	20.0%
29			5.0%
28			5.0%
27			5.0%
26	1	♦	5.0%
25			0.0%
24			0.0%
23			0.0%
22			0.0%
21			0.0%
20			0.0%

MPH	No of Veh.	Southbound	%
85			100.0%
84			100.0%
83			100.0%
82			100.0%
81			100.0%
80			100.0%
79			100.0%
78			100.0%
77			100.0%
76			100.0%
75			100.0%
74			100.0%
73			100.0%
72			100.0%
71			100.0%
70			100.0%
69			100.0%
68			100.0%
67			100.0%
66			100.0%
65			100.0%
64			100.0%
63			100.0%
62			100.0%
61			100.0%
60			100.0%
59			100.0%
58			100.0%
57			100.0%
56			100.0%
55			100.0%
54			100.0%
53			100.0%
52			100.0%
51			100.0%
50			100.0%
49			100.0%
48			100.0%
47			100.0%
46			100.0%
45			100.0%
44	1	♦	100.0%
43			96.4%
42	1	♦	96.4%
41			92.9%
40	2	♦♦	92.9%
39			85.7%
38	6	♦♦♦♦♦♦	85.7%
37			64.3%
36	3	♦♦♦	64.3%
35			53.6%
34	4	♦♦♦♦	53.6%
33			39.3%
32	4	♦♦♦♦	39.3%
31			25.0%
30	4	♦♦♦♦	25.0%
29			10.7%
28	1	♦	10.7%
27			7.1%
26	2	♦♦	7.1%
25			0.0%
24			0.0%
23			0.0%
22			0.0%
21			0.0%
20			0.0%



**CEDARS RD N/ BRANSTETTER LN**

Observer: Lori Lackey

Calcs: Frank Hogue

Posted Speed: 35  
Weather: Overcast & Dry

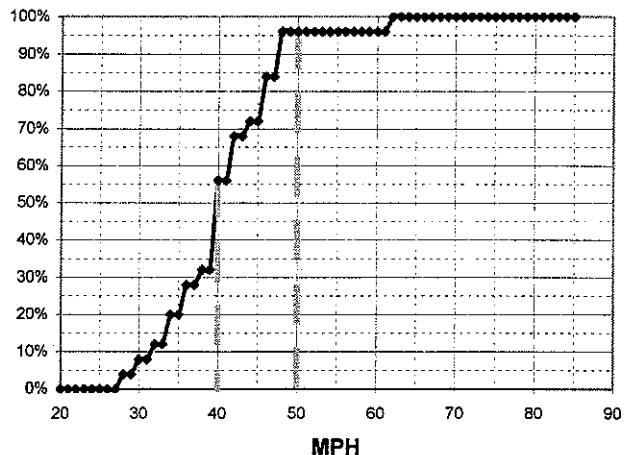
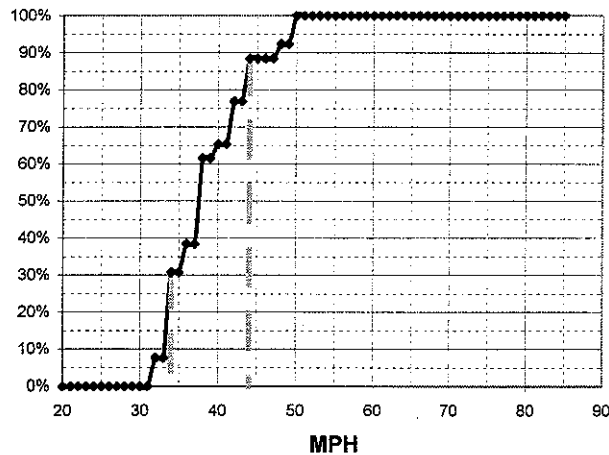
Day: Tuesday  
Date: 9/9/03  
Time: 09:45 - 10:45

Critical Speed :	44	mph
Average Speed :	39.0	mph
Median Speed :	38	mph
Standard Deviation:	5.2	mph
Pace Range :	34 - 44	mph
Percent in Pace :	69.2%	
Total # Vehicles :	26	

Critical Speed :	48	mph
Average Speed :	40.9	mph
Median Speed :	40	mph
Standard Deviation:	7.0	mph
Pace Range :	40 - 50	mph
Percent in Pace :	64.0%	
Total # Vehicles :	25	

MPH	# of Veh.	Northbound	%
85			100.0%
84			100.0%
83			100.0%
82			100.0%
81			100.0%
<b>80</b>			100.0%
79			100.0%
78			100.0%
77			100.0%
76			100.0%
75			100.0%
74			100.0%
73			100.0%
72			100.0%
71			100.0%
<b>70</b>			100.0%
69			100.0%
68			100.0%
67			100.0%
66			100.0%
65			100.0%
64			100.0%
63			100.0%
62			100.0%
61			100.0%
<b>60</b>			100.0%
59			100.0%
58			100.0%
57			100.0%
56			100.0%
55			100.0%
54			100.0%
53			100.0%
52			100.0%
51	2	♦♦	100.0%
49			92.3%
48	1	♦	92.3%
47			88.5%
46			88.5%
45			88.5%
44	3	♦♦♦	88.5%
43			76.9%
42	3	♦♦♦	76.9%
41			65.4%
<b>40</b>	1	♦	65.4%
39			61.5%
38	6	♦♦♦♦♦♦	61.5%
37			38.5%
36	2	♦♦	38.5%
35			30.8%
34	6	♦♦♦♦♦♦	30.8%
33			7.7%
32	2	♦♦	7.7%
31			0.0%
<b>30</b>			0.0%
29			0.0%
28			0.0%
27			0.0%
26			0.0%
25			0.0%
24			0.0%
23			0.0%
22			0.0%
21			0.0%
<b>20</b>			0.0%

MPH	No of Veh.	Southbound	%
85			100.0%
84			100.0%
83			100.0%
82			100.0%
81			100.0%
<b>80</b>			100.0%
79			100.0%
78			100.0%
77			100.0%
76			100.0%
75			100.0%
74			100.0%
73			100.0%
72			100.0%
71			100.0%
<b>70</b>			100.0%
69			100.0%
68			100.0%
67			100.0%
66			100.0%
65			100.0%
64			100.0%
63			100.0%
62	1	♦	96.0%
61			96.0%
<b>60</b>			96.0%
59			96.0%
58			96.0%
57			96.0%
56			96.0%
55			96.0%
54			96.0%
53			96.0%
52			96.0%
51			96.0%
<b>50</b>			96.0%
49			96.0%
48	3	♦♦♦	96.0%
47			84.0%
46	3	♦♦♦	84.0%
45			72.0%
44	1	♦	72.0%
43			68.0%
42	3	♦♦♦	68.0%
41			56.0%
<b>40</b>	6	♦♦♦♦♦♦	56.0%
39			32.0%
38	1	♦	32.0%
37			28.0%
36	2	♦♦	28.0%
35			20.0%
34	2	♦♦	20.0%
33			12.0%
32	1	♦	12.0%
31			8.0%
<b>30</b>	1	♦	8.0%
29			4.0%
28			4.0%
27	1	♦	0.0%
26			0.0%
25			0.0%
24			0.0%
23			0.0%
22			0.0%
21			0.0%
<b>20</b>			0.0%



**CEDARS RD N/ CONCORD LN**

Day: Tuesday  
 Date: 9/9/03  
 Time: 10:45 - 11:45

Observer: Lori Lackey

Calcs: Frank Hogue

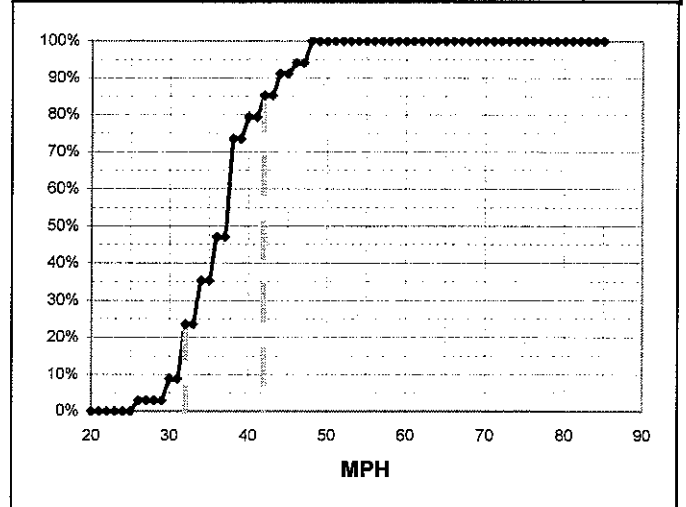
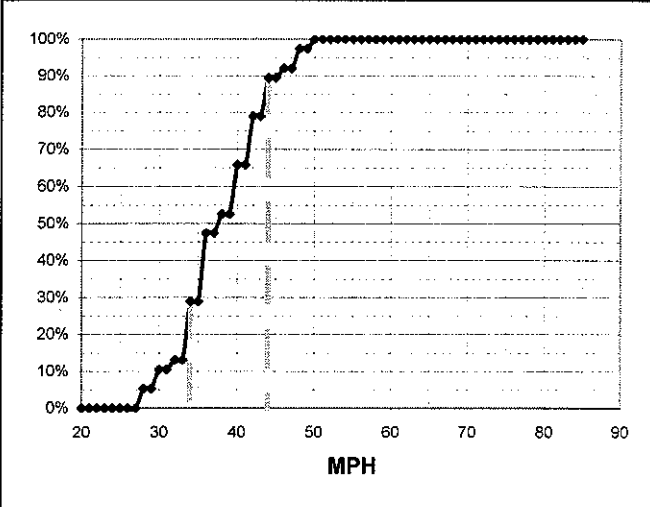
Posted Speed: 35  
 Weather: Overcast & Dry

Critical Speed :	<u>44</u>	<u>mph</u>
Average Speed :	<u>38.4</u>	<u>mph</u>
Median Speed :	<u>38</u>	<u>mph</u>
Standard Deviation:	<u>5.5</u>	<u>mph</u>
Pace Range :	<u>34 - 44</u>	<u>mph</u>
Percent in Pace :	<u>65.8%</u>	
Total # Vehicles :	<u>38</u>	

Critical Speed :	<u>42</u>	<u>mph</u>
Average Speed :	<u>37.1</u>	<u>mph</u>
Median Speed :	<u>38</u>	<u>mph</u>
Standard Deviation:	<u>5.1</u>	<u>mph</u>
Pace Range :	<u>32 - 42</u>	<u>mph</u>
Percent in Pace :	<u>70.6%</u>	
Total # Vehicles :	<u>34</u>	

MPH	# of Veh.	Northbound	%
85			100.0%
84			100.0%
83			100.0%
82			100.0%
81			100.0%
80			100.0%
79			100.0%
78			100.0%
77			100.0%
76			100.0%
75			100.0%
74			100.0%
73			100.0%
72			100.0%
71			100.0%
70			100.0%
69			100.0%
68			100.0%
67			100.0%
66			100.0%
65			100.0%
64			100.0%
63			100.0%
62			100.0%
61			100.0%
60			100.0%
59			100.0%
58			100.0%
57			100.0%
56			100.0%
55			100.0%
54			100.0%
53			100.0%
52			100.0%
51			100.0%
50	1	♦	100.0%
49			97.4%
48	2	♦♦	97.4%
47			92.1%
46	1	♦	92.1%
45			89.5%
44	4	♦♦♦♦	89.5%
43			78.9%
42	5	♦♦♦♦♦	78.9%
41			65.8%
40	5	♦♦♦♦♦	65.8%
39			52.6%
38	2	♦♦	52.6%
37			47.4%
36	7	♦♦♦♦♦♦♦	47.4%
35			28.9%
34	6	♦♦♦♦♦♦	28.9%
33			13.2%
32	1	♦	13.2%
31			10.5%
30	2	♦♦	10.5%
29			5.3%
28	2	♦♦	5.3%
27			0.0%
26			0.0%
25			0.0%
24			0.0%
23			0.0%
22			0.0%
21			0.0%
20			0.0%

MPH	No of Veh.	Southbound	%
85			100.0%
84			100.0%
83			100.0%
82			100.0%
81			100.0%
80			100.0%
79			100.0%
78			100.0%
77			100.0%
76			100.0%
75			100.0%
74			100.0%
73			100.0%
72			100.0%
71			100.0%
70			100.0%
69			100.0%
68			100.0%
67			100.0%
66			100.0%
65			100.0%
64			100.0%
63			100.0%
62			100.0%
61			100.0%
60			100.0%
59			100.0%
58			100.0%
57			100.0%
56			100.0%
55			100.0%
54			100.0%
53			100.0%
52			100.0%
51			100.0%
50			100.0%
49			100.0%
48	2	♦♦	100.0%
47			94.1%
46	1	♦	94.1%
45			91.2%
44	2	♦♦	91.2%
43			85.3%
42	2	♦♦	85.3%
41			79.4%
40	2	♦♦	79.4%
39			73.5%
38	9	♦♦♦♦♦♦♦♦♦	73.5%
37			47.1%
36	4	♦♦♦♦	47.1%
35			35.3%
34	4	♦♦♦♦	35.3%
33			23.5%
32	5	♦♦♦♦♦	23.5%
31			8.8%
30	2	♦♦	8.8%
29			2.9%
28			2.9%
27			2.9%
26	1	♦	2.9%
25			0.0%
24			0.0%
23			0.0%
22			0.0%
21			0.0%
20			0.0%



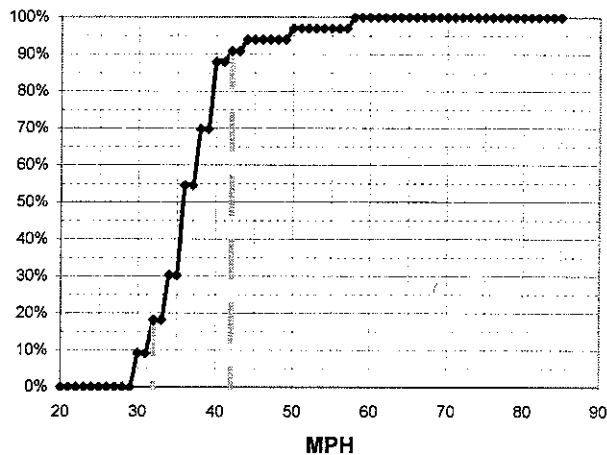
**CEDARS RD S/ CONCORD LN**

Observer: Lori Lackey

Calcs: Frank Hogue

Critical Speed :	40	mph
Average Speed :	37.4	mph
Median Speed :	36	mph
Standard Deviation:	5.5	mph
Pace Range :	32 - 42	mph
Percent in Pace :	78.8%	
Total # Vehicles :	33	

MPH	# of Veh.	Northbound	%
85			100.0%
84			100.0%
83			100.0%
82			100.0%
81			100.0%
80			100.0%
79			100.0%
78			100.0%
77			100.0%
76			100.0%
75			100.0%
74			100.0%
73			100.0%
72			100.0%
71			100.0%
70			100.0%
69			100.0%
68			100.0%
67			100.0%
66			100.0%
65			100.0%
64			100.0%
63			100.0%
62			100.0%
61			100.0%
60			100.0%
59			100.0%
58	1	◆	100.0%
57			97.0%
56			97.0%
55			97.0%
54			97.0%
53			97.0%
52			97.0%
51			97.0%
50	1	◆	97.0%
49			93.9%
48			93.9%
47			93.9%
46			93.9%
45			93.9%
44	1	◆	93.9%
43			90.9%
42	1	◆	90.9%
41			87.9%
40	6	◆◆◆◆◆◆	87.9%
39			69.7%
38	5	◆◆◆◆◆	69.7%
37			54.5%
36	8	◆◆◆◆◆◆◆◆	54.5%
35			30.3%
34	4	◆◆◆◆	30.3%
33			18.2%
32	3	◆◆◆	18.2%
31			9.1%
30	3	◆◆◆	9.1%
29			0.0%
28			0.0%
27			0.0%
26			0.0%
25			0.0%
24			0.0%
23			0.0%
22			0.0%
21			0.0%
20			0.0%



Posted Speed: 35  
Weather: Sunny & Dry

Day: Thursday  
Date: 10/2/03  
Time: 08:45 - 09:45

Critical Speed :	42	mph
Average Speed :	37.2	mph
Median Speed :	38	mph
Standard Deviation:	4.4	mph
Pace Range :	32 - 42	mph
Percent in Pace :	71.9%	
Total # Vehicles :	64	

MPH	No of Veh.	Southbound	%
85			100.0%
84			100.0%
83			100.0%
82			100.0%
81			100.0%
80			100.0%
79			100.0%
78			100.0%
77			100.0%
76			100.0%
75			100.0%
74			100.0%
73			100.0%
72			100.0%
71			100.0%
70			100.0%
69			100.0%
68			100.0%
67			100.0%
66			100.0%
65			100.0%
64			100.0%
63			100.0%
62			100.0%
61			100.0%
60			100.0%
59			100.0%
58			100.0%
57			100.0%
56			100.0%
55			100.0%
54			100.0%
53			100.0%
52			100.0%
51			100.0%
50			100.0%
49			100.0%
48			100.0%
47			100.0%
46	1	◆	100.0%
45			99.4%
44	6	◆◆◆◆◆◆	98.4%
43			89.1%
42	6	◆◆◆◆◆◆	89.1%
41			79.7%
40	11	◆◆◆◆◆◆◆◆◆◆	79.7%
39			62.5%
38	11	◆◆◆◆◆◆◆◆◆◆	62.5%
37			45.3%
36	8	◆◆◆◆◆◆◆◆	45.3%
35			32.8%
34	7	◆◆◆◆◆◆◆	32.8%
33			21.9%
32	9	◆◆◆◆◆◆◆◆◆	21.9%
31			7.8%
30	3	◆◆◆	7.8%
29			3.1%
28	2	◆◆	3.1%
27			0.0%
26			0.0%
25			0.0%
24			0.0%
23			0.0%
22			0.0%
21			0.0%
20			0.0%

