

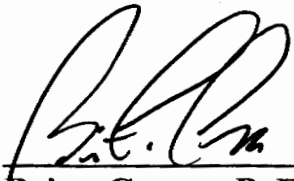


**CITY OF REDDING  
CERTIFIED EXTENSION  
OF  
ENGINEERING AND TRAFFIC SURVEY  
FOR  
COURT STREET**

**For the determination of safe and reasonable speed zoning as required by Sections 22358 and 40802 of the California Vehicle Code (CVC), as defined by Section 627 of the CVC and in accordance with Section 2B. 13 of the California Manual on Uniform Traffic Control Devices, this Engineering and Traffic Survey (ETS) was initiated to verify or modify speed zones on Court Street.**

**Based on the results of this ETS (attached) and adoption of Ordinance Number 2465 by the City Council of the City of Redding, amending Redding Municipal Code Section 11.12.010, a speed zone on Court Street of 30 MPH from Quartz Hill Road to Eleventh Street is established and a speed zone of 30 MPH from Eleventh Street to Sheridan Street is established.**

**This ETS was reviewed by a Registered Engineer and no significant changes in roadway or traffic conditions have occurred, including, but not limited to, changes in adjoining property or land use, roadway width, or traffic volume since the original study date of preparation and is found to be in compliance with CVC 40802, valid until March 31, 2014.**

  
3/26/2012  
\_\_\_\_\_  
Brian Crane, P. E.  
Director of Public Works

**ATTEST:**

  
3/26/12  
\_\_\_\_\_  
PAMELA MIZE, City Clerk

**COURT ST  
MARCH 2004  
CONDITION SUMMARY**

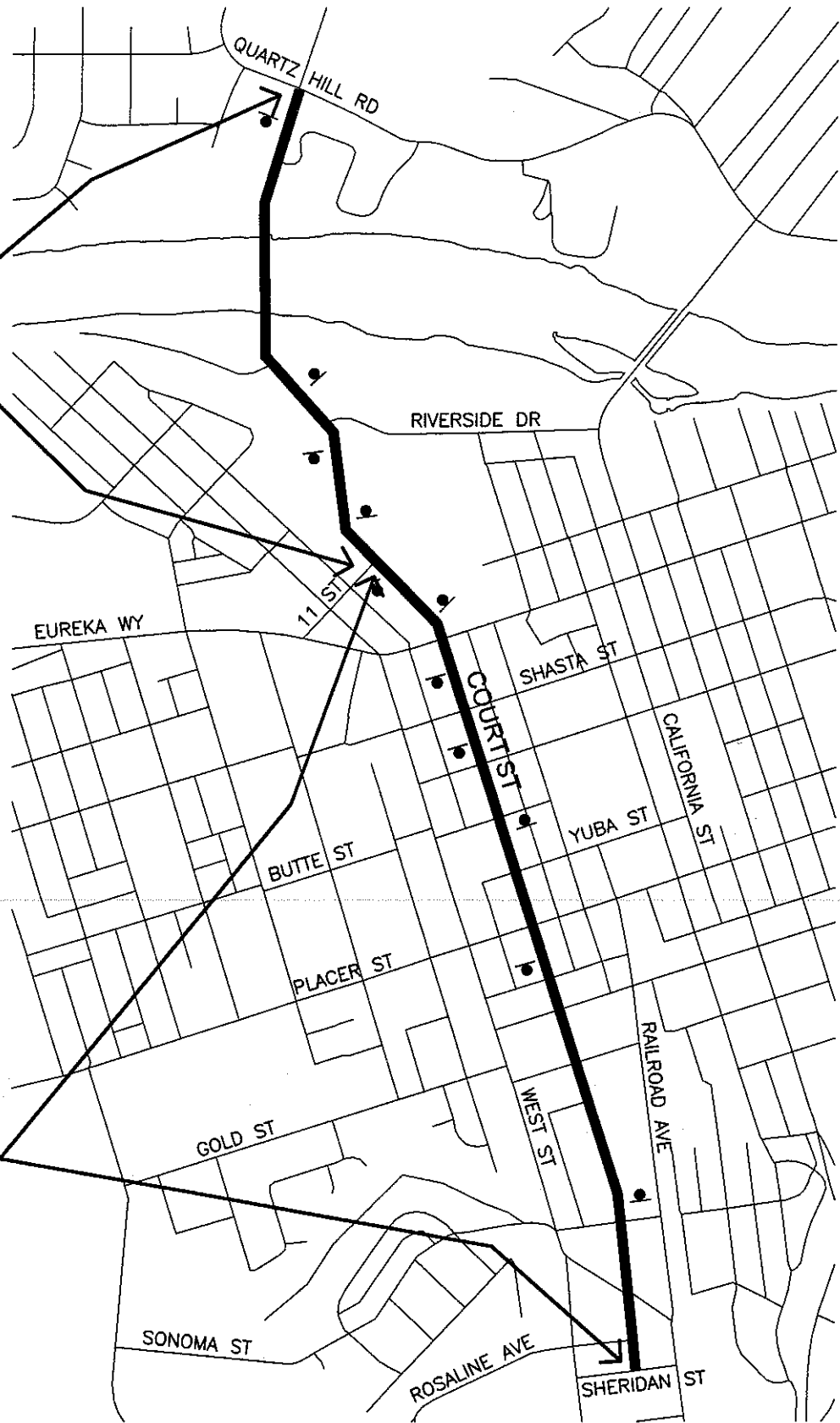
FROM LOCATION TO	QUARTZ HILL ELEVANTH	ELEVANTH EUREKA	EUREKA SHERIDAN
NO. OF LANES	2	2	4
ROADWAY WIDTH	64'	56'	56'
LENGTH	3440	655'	5,115'
HORIZONTAL ALIGNMENT	GENTLE CURVES	STRAIGHT	STRAIGHT
VERTICAL	GENTLE SLOPES	FLAT	FLAT
DISTRICT	RESIDENTIAL/PARK	BUSINESS	BUSINESS
ADT	12,100	8,762	11,600
PEDESTRIANS	FEW	NUMEROUS	FEW
SIDEWALKS	60%	YES	YES
DRIVEWAYS	FEW	FEW	FEW
SPEED RELATED ACCIDENTS	NOT SIGNIFICANT	NONE	SIGNIFICANT
EXISTING SPEED ZONE	35 MPH	30 MPH	30 MPH
BALL BANK SPEED	N/A	N/A	N/A
85TH% SPEED	38 MPH	35 MPH	34 MPH
<b>SURVEY CONCLUSION</b>			
REASONABLE SPEED	*30 MPH	30 MPH	30 MPH
<b>ACTION</b>			
CITY COUNCIL APPROVED	CITY ORDINANCE 2011	CITY ORDINANCE 2011	CITY ORDINANCE 2011
SIGNS POSTED	10/04	5/13/80	5/13/80

**ADDITIONAL  
COMMENTS:**

**\* COMMUNITY PARK, RIVER TRAIL ZONE CONSISTENCY**

30 MPH  
SPEED  
ZONE

30 MPH  
SPEED  
ZONE



**LEGEND**

● SPEED LIMIT SIGN

CITY OF REDDING MUNICIPAL UTILITIES TRAFFIC OPERATIONS



**COURT ST SPEED STUDY**  
**QUARTZ HILL RD TO SHERIDAN ST**





COURT ST @ YUBA ST

Day: **Wednesday**

Date: **8/27/03**

Time: **09:15 - 09:40**

Posted Speed: **30**

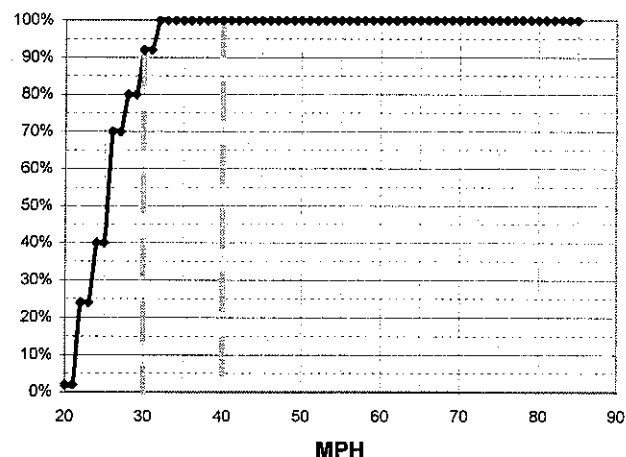
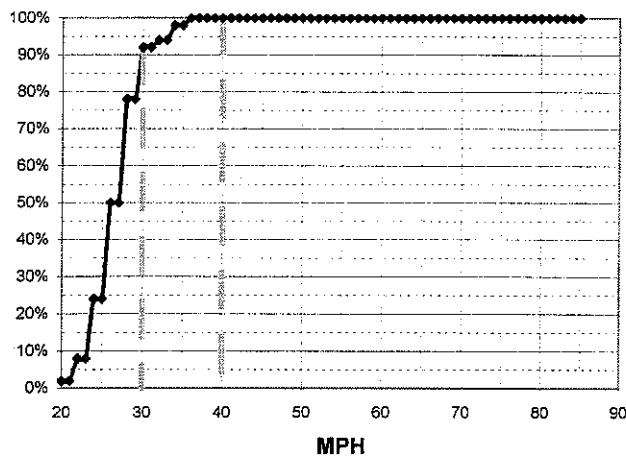
Weather: **Sunny & Dry**

Observer: **Lori Lackey**

Calcs: **Frank Hogue**

MPH	# of Veh.	Northbound	%
85			100.0%
84			100.0%
83			100.0%
82			100.0%
81			100.0%
80			100.0%
79			100.0%
78			100.0%
77			100.0%
76			100.0%
75			100.0%
74			100.0%
73			100.0%
72			100.0%
71			100.0%
70			100.0%
69			100.0%
68			100.0%
67			100.0%
66			100.0%
65			100.0%
64			100.0%
63			100.0%
62			100.0%
61			100.0%
60			100.0%
59			100.0%
58			100.0%
57			100.0%
56			100.0%
55			100.0%
54			100.0%
53			100.0%
52			100.0%
51			100.0%
50			100.0%
49			100.0%
48			100.0%
47			100.0%
46			100.0%
45			100.0%
44			100.0%
43			100.0%
42			100.0%
41			100.0%
40			100.0%
39			100.0%
38			100.0%
37			100.0%
36	1	◆	100.0%
35			98.0%
34	2	◆◆	98.0%
33			94.0%
32	1	◆	94.0%
31	7	◆◆◆◆◆◆◆	92.0%
30			92.0%
29			78.0%
28	14	◆◆◆◆◆◆◆◆◆◆◆◆◆	78.0%
27			50.0%
26	13	◆◆◆◆◆◆◆◆◆◆◆◆◆	50.0%
25			24.0%
24	8	◆◆◆◆◆◆◆◆	24.0%
23			8.0%
22	3	◆◆◆	8.0%
21			2.0%
20	1	◆	2.0%

MPH	No of Veh.	Southbound	%
85			100.0%
84			100.0%
83			100.0%
82			100.0%
81			100.0%
80			100.0%
79			100.0%
78			100.0%
77			100.0%
76			100.0%
75			100.0%
74			100.0%
73			100.0%
72			100.0%
71			100.0%
70			100.0%
69			100.0%
68			100.0%
67			100.0%
66			100.0%
65			100.0%
64			100.0%
63			100.0%
62			100.0%
61			100.0%
60			100.0%
59			100.0%
58			100.0%
57			100.0%
56			100.0%
55			100.0%
54			100.0%
53			100.0%
52			100.0%
51			100.0%
50			100.0%
49			100.0%
48			100.0%
47			100.0%
46			100.0%
45			100.0%
44			100.0%
43			100.0%
42			100.0%
41			100.0%
40			100.0%
39			100.0%
38			100.0%
37			100.0%
36			100.0%
35			100.0%
34			100.0%
33	4	◆◆◆◆	100.0%
32			100.0%
31	6	◆◆◆◆◆◆	92.0%
30			92.0%
29			80.0%
28	5	◆◆◆◆◆	80.0%
27			70.0%
26	15	◆◆◆◆◆◆◆◆◆◆◆◆◆	70.0%
25			40.0%
24	8	◆◆◆◆◆◆◆◆	40.0%
23			24.0%
22	11	◆◆◆◆◆◆◆◆◆◆◆	24.0%
21			2.0%
20	1	◆	2.0%



COURT ST N/ SONOMA ST

Observer: Lori Lackey  
 Calcs: Frank Hogue

Posted Speed: 30  
 Weather: Sunny

Day: Thursday  
 Date: 9/4/03  
 Time: 08:30 - 08:55

MPH	# of Veh.	Northbound	%
85			100.0%
84			100.0%
83			100.0%
82			100.0%
81			100.0%
80			100.0%
79			100.0%
78			100.0%
77			100.0%
76			100.0%
75			100.0%
74			100.0%
73			100.0%
72			100.0%
71			100.0%
70			100.0%
69			100.0%
68			100.0%
67			100.0%
66			100.0%
65			100.0%
64			100.0%
63			100.0%
62			100.0%
61			100.0%
60			100.0%
59			100.0%
58			100.0%
57			100.0%
56			100.0%
55			100.0%
54			100.0%
53			100.0%
52			100.0%
51			100.0%
50			100.0%
49			100.0%
48			100.0%
47			100.0%
46			100.0%
45			100.0%
44			100.0%
43			100.0%
42			100.0%
41			100.0%
40	1	◆	100.0%
39			98.0%
38	8	◆◆◆◆◆◆◆◆	98.0%
37	18	◆◆◆◆◆◆◆◆◆◆◆◆◆◆◆◆	82.0%
36	18	◆◆◆◆◆◆◆◆◆◆◆◆◆◆◆◆	82.0%
35			46.0%
34	9	◆◆◆◆◆◆◆◆◆◆	46.0%
33			28.0%
32	6	◆◆◆◆◆◆	28.0%
31			16.0%
30	4	◆◆◆◆	16.0%
29			8.0%
28	3	◆◆◆	8.0%
27			2.0%
26	1	◆	2.0%
25			0.0%
24			0.0%
23			0.0%
22			0.0%
21			0.0%
20			0.0%

MPH	No of Veh.	Southbound	%
85			100.0%
84			100.0%
83			100.0%
82			100.0%
81			100.0%
80			100.0%
79			100.0%
78			100.0%
77			100.0%
76			100.0%
75			100.0%
74			100.0%
73			100.0%
72			100.0%
71			100.0%
70			100.0%
69			100.0%
68			100.0%
67			100.0%
66			100.0%
65			100.0%
64			100.0%
63			100.0%
62			100.0%
61			100.0%
60			100.0%
59			100.0%
58			100.0%
57			100.0%
56			100.0%
55			100.0%
54			100.0%
53			100.0%
52			100.0%
51			100.0%
50			100.0%
49			100.0%
48			100.0%
47			100.0%
46			100.0%
45			100.0%
44			100.0%
43			100.0%
42	1	◆	100.0%
41			98.0%
40	4	◆◆◆◆	98.0%
39			90.0%
38	3	◆◆◆	90.0%
37			84.0%
36	8	◆◆◆◆◆◆◆◆	84.0%
35			66.0%
34	15	◆◆◆◆◆◆◆◆◆◆◆◆◆◆◆◆	66.0%
33			38.0%
32	9	◆◆◆◆◆◆◆◆◆◆	38.0%
31			20.0%
30	7	◆◆◆◆◆◆◆	20.0%
29			6.0%
28	2	◆◆	6.0%
27			2.0%
26	1	◆	2.0%
25			0.0%
24			0.0%
23			0.0%
22			0.0%
21			0.0%
20			0.0%

