

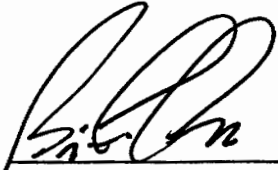


**CITY OF REDDING
CERTIFIED EXTENSION
OF
ENGINEERING AND TRAFFIC SURVEY
FOR
EAST BONNYVIEW ROAD**

For the determination of safe and reasonable speed zoning as required by Sections 22358 and 40802 of the California Vehicle Code (CVC), as defined by Section 627 of the CVC and in accordance with Section 2B. 13 of the California Manual on Uniform Traffic Control Devices, this Engineering and Traffic Survey (ETS) was initiated to verify or modify speed zones on East Bonnyview Road.

Based on the results of this ETS (attached) and adoption of Ordinance Number 2465 by the City Council of the City of Redding, amending Redding Municipal Code Section 11.12.010, a speed zone on East Bonnyview Road of 35 MPH from Radio Lane to North Bonnyview Road is established and a speed zone of 35 MPH from North Bonnyview Road to South Bonnyview Road is established.

This ETS was reviewed by a Registered Engineer and no significant changes in roadway or traffic conditions have occurred, including, but not limited to, changes in adjoining property or land use, roadway width, or traffic volume since the original study date of preparation and is found to be in compliance with CVC 40802, valid until March 31, 2014.

 3/26/2012

Brian Crane, P. E.
Director of Public Works

ATTEST:



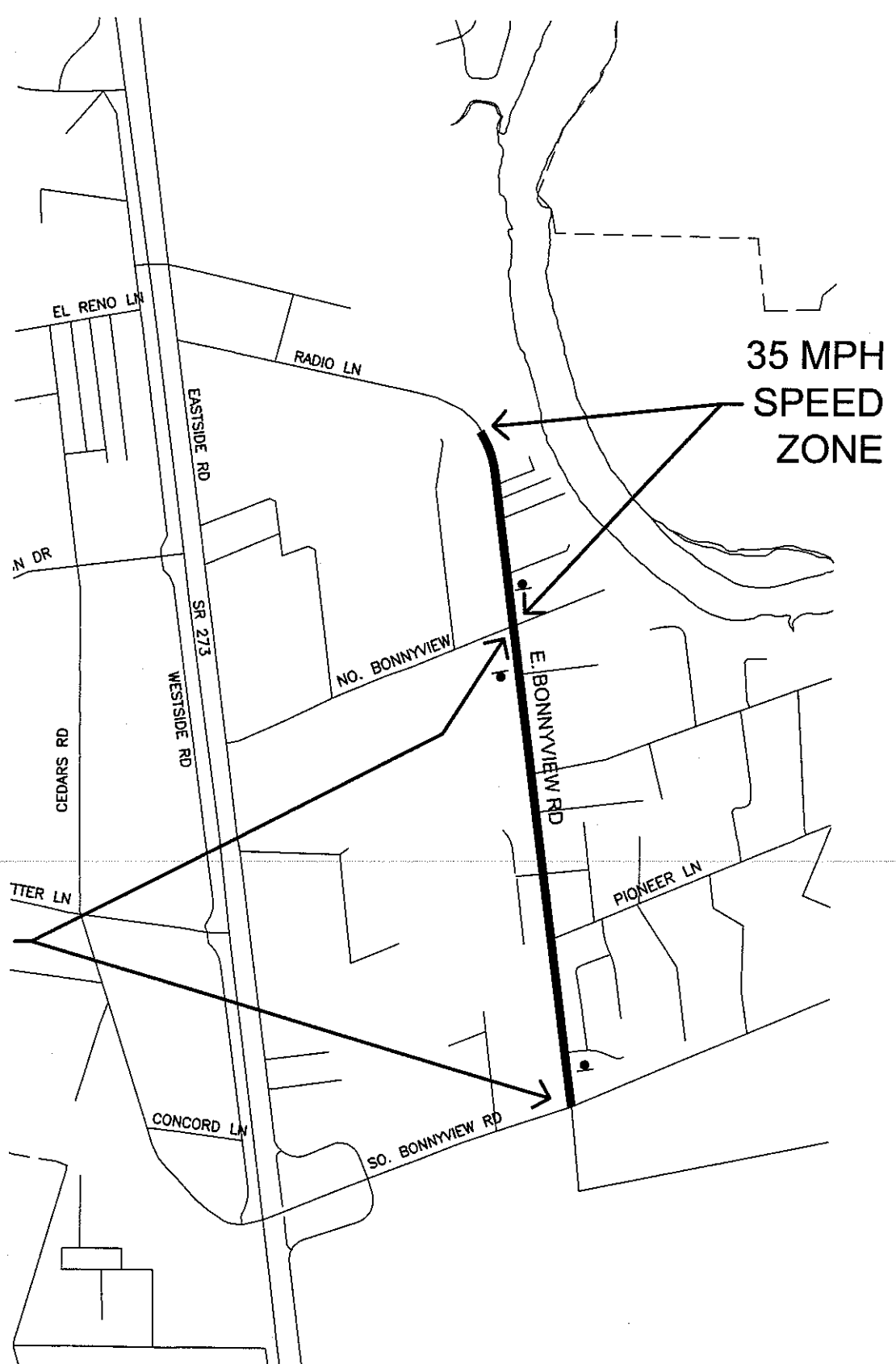
PAMELA MIZE, City Clerk

**EAST BONNYVIEW ROAD
MARCH 2004
CONDITION SUMMARY**

LOCATION FROM TO	RADIO	N. BONNYVIEW
		S. BONNYVIEW
NO. OF LANES	2	2
ROADWAY WIDTH	28'	28'
LENGTH	.34 MILES	.76 MILES
ALIGNMENT HORIZONTAL	GENTLE CURVE	STRAIGHT
VERTICAL	FLAT	FLAT
DISTRICT	RESIDENTIAL	RESIDENTIAL
ADT	2,622	4,907
PEDESTRIANS	SOME	SOME
SIDEWALKS	NONE	45%
DRIVEWAYS	SEVERAL	SEVERAL
SPEED RELATED ACCIDENTS	NOT SIGNIFICANT	NOT SIGNIFICANT
EXISTING SPEED ZONE	35 MPH	40 MPH
BALL BANK SPEED	N/A	N/A
85TH% SPEED	42 MPH	46 MPH
SURVEY CONCLUSION		
REASONABLE SPEED	*35 MPH	*35 MPH
ACTION		
CITY COUNCIL APPROVED	CITY ORDINANCE 2011	CITY ORDINANCE 2011
SIGNS POSTED	3/27/80	3/27/80

**ADDITIONAL
COMMENTS:**

*** RESIDENTIAL DISTRICT & SCHOOL IN AREA
WITH LARGE PERCENTAGE WITHOUT
SIDEWALKS**



35 MPH
SPEED
ZONE

35 MPH
SPEED
ZONE

LEGEND

 SPEED LIMIT SIGN

CITY OF REDDING MUNICIPAL UTILITIES TRAFFIC OPERATIONS

E. BONNYVIEW RD SPEED STUDY
RADIO LN TO SO. BONNYVIEW RD



E. BONNYVIEW RD N/ NO BONNYVIEW RD

Observer: Lori Lackey

Calcs: Frank Hogue

Posted Speed: 35
Weather: Sunny & Dry

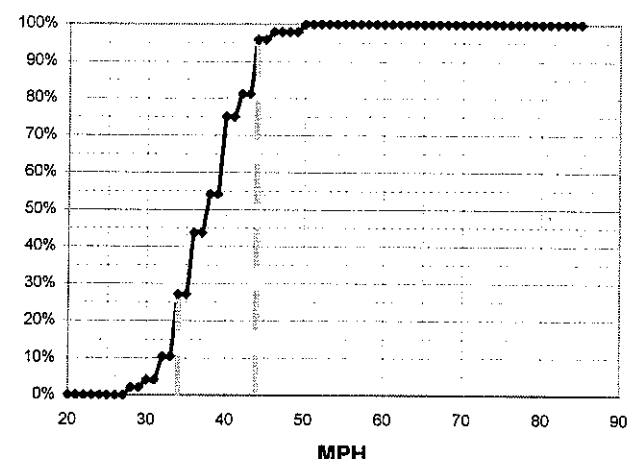
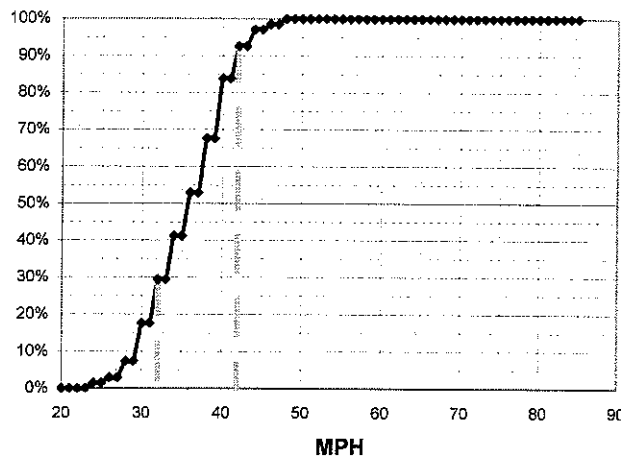
Day: Thursday
Date: 9/11/03
Time: 09:30 - 10:00

Critical Speed :	42	mph
Average Speed :	36.1	mph
Median Speed :	36	mph
Standard Deviation:	5.0	mph
Pace Range :	32 - 42	mph
Percent in Pace :	66.2%	
Total # Vehicles :	68	

Critical Speed :	44	mph
Average Speed :	38.2	mph
Median Speed :	38	mph
Standard Deviation:	4.5	mph
Pace Range :	34 - 44	mph
Percent in Pace :	70.8%	
Total # Vehicles :	48	

MPH	# of Veh.	Northbound	%
85			100.0%
84			100.0%
83			100.0%
82			100.0%
81			100.0%
80			100.0%
79			100.0%
78			100.0%
77			100.0%
76			100.0%
75			100.0%
74			100.0%
73			100.0%
72			100.0%
71			100.0%
70			100.0%
69			100.0%
68			100.0%
67			100.0%
66			100.0%
65			100.0%
64			100.0%
63			100.0%
62			100.0%
61			100.0%
60			100.0%
59			100.0%
58			100.0%
57			100.0%
56			100.0%
55			100.0%
54			100.0%
53			100.0%
52			100.0%
51			100.0%
50			100.0%
49			100.0%
48	1	◆	100.0%
47	1	◆	98.5%
46	1	◆	98.5%
45			97.1%
44	3	◆◆◆	97.1%
43			92.6%
42	6	◆◆◆◆◆◆	92.6%
41			83.8%
40	11	◆◆◆◆◆◆◆◆◆◆◆	83.8%
39			67.6%
38	10	◆◆◆◆◆◆◆◆◆◆	67.6%
37			52.9%
36	8	◆◆◆◆◆◆◆◆	52.9%
35			41.2%
34	8	◆◆◆◆◆◆◆◆	41.2%
33			29.4%
32	8	◆◆◆◆◆◆◆◆	29.4%
31			17.6%
30	7	◆◆◆◆◆◆◆	17.6%
29			7.4%
28	3	◆◆◆	7.4%
27			2.9%
26	1	◆	2.9%
25			1.5%
24	1	◆	1.5%
23			0.0%
22			0.0%
21			0.0%
20			0.0%

MPH	No of Veh.	Southbound	%
85			100.0%
84			100.0%
83			100.0%
82			100.0%
81			100.0%
80			100.0%
79			100.0%
78			100.0%
77			100.0%
76			100.0%
75			100.0%
74			100.0%
73			100.0%
72			100.0%
71			100.0%
70			100.0%
69			100.0%
68			100.0%
67			100.0%
66			100.0%
65			100.0%
64			100.0%
63			100.0%
62			100.0%
61			100.0%
60			100.0%
59			100.0%
58			100.0%
57			100.0%
56			100.0%
55			100.0%
54			100.0%
53			100.0%
52			100.0%
51			100.0%
50	1	◆	100.0%
49			97.9%
48			97.9%
47			97.9%
46	1	◆	97.9%
45			95.8%
44	7	◆◆◆◆◆◆◆	95.8%
43			81.3%
42	3	◆◆◆	81.3%
41			75.0%
40	10	◆◆◆◆◆◆◆◆◆◆	75.0%
39			54.2%
38	5	◆◆◆◆◆	54.2%
37			43.8%
36	8	◆◆◆◆◆◆◆◆	43.8%
35			27.1%
34	8	◆◆◆◆◆◆◆◆	27.1%
33			10.4%
32	3	◆◆◆	10.4%
31			4.2%
30	1	◆	4.2%
29			2.1%
28	1	◆	2.1%
27			0.0%
26			0.0%
25			0.0%
24			0.0%
23			0.0%
22			0.0%
21			0.0%
20			0.0%



E. BONNYVIEW RD N/ BARREL CT

Observer: Lori Lackey

Calcs: Frank Hogue

Posted Speed: 40
Weather: Sunny & Dry

Day: Thursday
Date: 9/11/03
Time: 08:45 - 09:20

Critical Speed :	46	mph
Average Speed :	40.1	mph
Median Speed :	40	mph
Standard Deviation:	4.9	mph
Pace Range :	34 - 44	mph
Percent in Pace :	74.6%	
Total # Vehicles :	59	

Critical Speed :	48	mph
Average Speed :	42.9	mph
Median Speed :	42	mph
Standard Deviation:	5.2	mph
Pace Range :	40 - 50	mph
Percent in Pace :	65.9%	
Total # Vehicles :	41	

MPH	# of Veh.	Northbound	%
85			100.0%
84			100.0%
83			100.0%
82			100.0%
81			100.0%
80			100.0%
79			100.0%
78			100.0%
77			100.0%
76			100.0%
75			100.0%
74			100.0%
73			100.0%
72			100.0%
71			100.0%
70			100.0%
69			100.0%
68			100.0%
67			100.0%
66			100.0%
65			100.0%
64			100.0%
63			100.0%
62			100.0%
61			100.0%
60			100.0%
59			100.0%
58			100.0%
57			100.0%
56	1	◆	100.0%
55			98.3%
54			98.3%
53			98.3%
52			98.3%
51			98.3%
50	1	◆	98.3%
49			96.6%
48	5	◆◆◆◆◆	96.6%
47			88.1%
46	3	◆◆◆	88.1%
45			83.1%
44	3	◆◆◆	83.1%
43			78.0%
42	11	◆◆◆◆◆◆◆◆◆◆◆	78.0%
41			59.3%
40	8	◆◆◆◆◆◆◆◆	59.3%
39			45.8%
38	8	◆◆◆◆◆◆◆◆	45.8%
37			32.2%
36	12	◆◆◆◆◆◆◆◆◆◆◆◆◆◆	32.2%
35			11.9%
34	5	◆◆◆◆◆	11.9%
33			3.4%
32	1	◆	3.4%
31			1.7%
30	1	◆	1.7%
29			0.0%
28			0.0%
27			0.0%
26			0.0%
25			0.0%
24			0.0%
23			0.0%
22			0.0%
21			0.0%
20			0.0%

MPH	No of Veh.	Southbound	%
85			100.0%
84			100.0%
83			100.0%
82			100.0%
81			100.0%
80			100.0%
79			100.0%
78			100.0%
77			100.0%
76			100.0%
75			100.0%
74			100.0%
73			100.0%
72			100.0%
71			100.0%
70			100.0%
69			100.0%
68			100.0%
67			100.0%
66			100.0%
65			100.0%
64			100.0%
63			100.0%
62			100.0%
61			100.0%
60			100.0%
59			100.0%
58			100.0%
57			100.0%
56			100.0%
55			100.0%
54	1	◆	100.0%
53			97.6%
52			97.6%
51			97.6%
50	5	◆◆◆◆◆	97.6%
49			85.4%
48	5	◆◆◆◆◆	85.4%
47			73.2%
46	5	◆◆◆◆◆	73.2%
45			61.0%
44	3	◆◆◆	61.0%
43			53.7%
42	5	◆◆◆◆◆	53.7%
41			41.5%
40	9	◆◆◆◆◆◆◆◆◆	41.5%
39			19.5%
38	2	◆◆	19.5%
37			14.6%
36	3	◆◆◆	14.6%
35			7.3%
34	2	◆◆	7.3%
33			2.4%
32	1	◆	2.4%
31			0.0%
30			0.0%
29			0.0%
28			0.0%
27			0.0%
26			0.0%
25			0.0%
24			0.0%
23			0.0%
22			0.0%
21			0.0%
20			0.0%

