

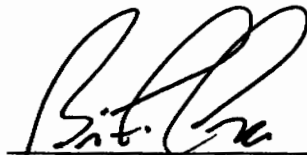


**CITY OF REDDING  
CERTIFIED EXTENSION  
OF  
ENGINEERING AND TRAFFIC SURVEY  
FOR  
EASTSIDE ROAD**

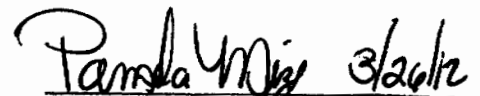
**For the determination of safe and reasonable speed zoning as required by Sections 22358 and 40802 of the California Vehicle Code (CVC), as defined by Section 627 of the CVC and in accordance with Section 2B. 13 of the California Manual on Uniform Traffic Control Devices, this Engineering and Traffic Survey (ETS) was initiated to verify or modify speed zones on Eastside Road.**

**Based on the results of this ETS (attached) and adoption of Ordinance Number 2465 by the City Council of the City of Redding, amending Redding Municipal Code Section 11.12.010, a speed zone on Eastside Road of 40 MPH from Wyndham Lane to Breslauer Way is established and a speed zone of 45 MPH from Breslauer Way to Girvan Road is established.**

**This ETS was reviewed by a Registered Engineer and no significant changes in roadway or traffic conditions have occurred, including, but not limited to, changes in adjoining property or land use, roadway width, or traffic volume since the original study date of preparation and is found to be in compliance with CVC 40802, valid until March 31, 2014.**

  
3/26/2012  
\_\_\_\_\_  
**Brian Crane, P. E.**  
**Director of Public Works**

ATTEST:

  
3/26/12  
\_\_\_\_\_  
**PAMELA MIZE, City Clerk**

**EASTSIDE ROAD  
MARCH 2004  
CONDITION SUMMARY**

LOCATION	FROM WYNDHAM	BRESLAUER	S. BONNYVIEW
	TO BRESLAUER	S. BONNYVIEW	GIRVAN
NO. OF LANES	2	2	2
ROADWAY WIDTH	28'	28'	28'
LENGTH	.74 MILES	1.48 MILES	.68 MILES
HORIZONTAL ALIGNMENT	STRAIGHT	STRAIGHT	STRAIGHT
VERTICAL	FLAT	FLAT	FLAT
DISTRICT	BUSINESS	RESIDENTIAL/BUSINESS	BUSINESS
ADT	3,164	3,722	5,760
PEDESTRIANS	FEW	FEW	FEW
SIDEWALKS	50%	5%	15%
DRIVEWAYS	NUMEROUS	NUMEROUS	NUMEROUS
SPEED RELATED ACCIDENTS	NOT SIGNIFICANT	NOT SIGNIFICANT	NOT SIGNIFICANT
EXISTING SPEED ZONE	40 MPH	45 MPH	45 MPH
BALL BANK SPEED	N/A	N/A	N/A
85TH% SPEED	46 MPH	52 MPH	52 MPH
<b>SURVEY CONCLUSION</b>			
REASONABLE SPEED	40 MPH	*45 MPH	*45 MPH
<b>ACTION</b>			
CITY COUNCIL APPROVED	CITY ORDINANCE 2011	CITY ORDINANCE 2011	CITY ORDINANCE 2011
SIGNS POSTED	3/26/80	3/26/80	3/26/80

**ADDITIONAL COMMENTS:**

**\* HEAVY TRUCK TRAFFIC WITH A LOT OF DRIVEWAYS**



40 MPH  
SPEED  
ZONE

45 MPH  
SPEED  
ZONE

**LEGEND**

 SPEED LIMIT SIGN

CITY OF REDDING MUNICIPAL UTILITIES TRAFFIC OPERATIONS

**EASTSIDE RD SPEED STUDY**

WYNDHAM LN TO GIRVAN RD



**EASTSIDE ROAD N/ BRESLAUER WY**

Day Wednesday

Posted Speed: 40

Date: 9/10/03

Weather: Sunny & Dry

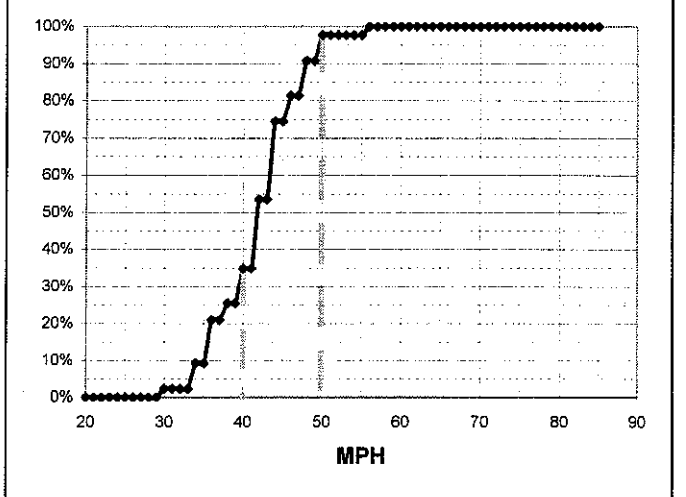
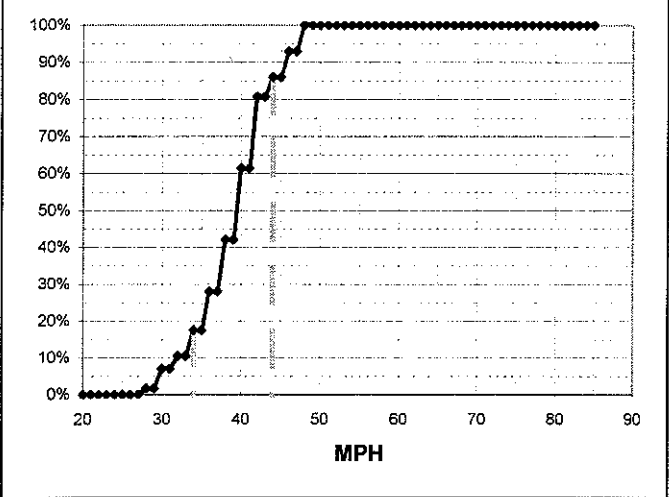
Time: 09:30 - 09:45

Observer: Lori Lackey

Calcs: Frank Hogue

MPH	# of Veh.	Northbound	%
85			100.0%
84			100.0%
83			100.0%
82			100.0%
81			100.0%
80			100.0%
79			100.0%
78			100.0%
77			100.0%
76			100.0%
75			100.0%
74			100.0%
73			100.0%
72			100.0%
71			100.0%
70			100.0%
69			100.0%
68			100.0%
67			100.0%
66			100.0%
65			100.0%
64			100.0%
63			100.0%
62			100.0%
61			100.0%
60			100.0%
59			100.0%
58			100.0%
57			100.0%
56			100.0%
55			100.0%
54			100.0%
53			100.0%
52			100.0%
51			100.0%
50			100.0%
49			100.0%
48	4	◆◆◆◆	100.0%
47			93.0%
46	4	◆◆◆◆	86.0%
45			86.0%
44	3	◆◆◆	80.7%
43			80.7%
42	11	◆◆◆◆◆◆◆◆◆◆	61.4%
41			61.4%
40	11	◆◆◆◆◆◆◆◆◆◆	42.1%
39			42.1%
38	8	◆◆◆◆◆◆◆◆	28.1%
37			28.1%
36	6	◆◆◆◆◆◆	17.5%
35			17.5%
34	4	◆◆◆◆	10.5%
33			10.5%
32	2	◆◆	7.0%
31			7.0%
30	3	◆◆◆	1.8%
29			1.8%
28	1	◆	0.0%
27			0.0%
26			0.0%
25			0.0%
24			0.0%
23			0.0%
22			0.0%
21			0.0%
20			0.0%

MPH	No of Veh.	Southbound	%
85			100.0%
84			100.0%
83			100.0%
82			100.0%
81			100.0%
80			100.0%
79			100.0%
78			100.0%
77			100.0%
76			100.0%
75			100.0%
74			100.0%
73			100.0%
72			100.0%
71			100.0%
70			100.0%
69			100.0%
68			100.0%
67			100.0%
66			100.0%
65			100.0%
64			100.0%
63			100.0%
62			100.0%
61			100.0%
60			100.0%
59			100.0%
58			100.0%
57			100.0%
56	1	◆	100.0%
55			97.7%
54			97.7%
53			97.7%
52			97.7%
51			97.7%
50	3	◆◆◆	97.7%
49			90.7%
48	4	◆◆◆◆	90.7%
47			81.4%
46	3	◆◆◆	81.4%
45			74.4%
44	9	◆◆◆◆◆◆◆◆◆	74.4%
43			53.5%
42	8	◆◆◆◆◆◆◆◆	53.5%
41			34.9%
40	4	◆◆◆◆	34.9%
39			25.6%
38	2	◆◆	25.6%
37			20.9%
36	5	◆◆◆◆◆	20.9%
35			9.3%
34	3	◆◆◆	9.3%
33			2.3%
32			2.3%
31			2.3%
30	1	◆	2.3%
29			0.0%
28			0.0%
27			0.0%
26			0.0%
25			0.0%
24			0.0%
23			0.0%
22			0.0%
21			0.0%
20			0.0%



CITY OF REDDING **SPEED SURVEY CALCULATION SHEET**  
**EASTSIDE ROAD S/ RADIO LN**

Day: Wednesday  
 Date: 9/10/03  
 Time: 11:00 - 11:30

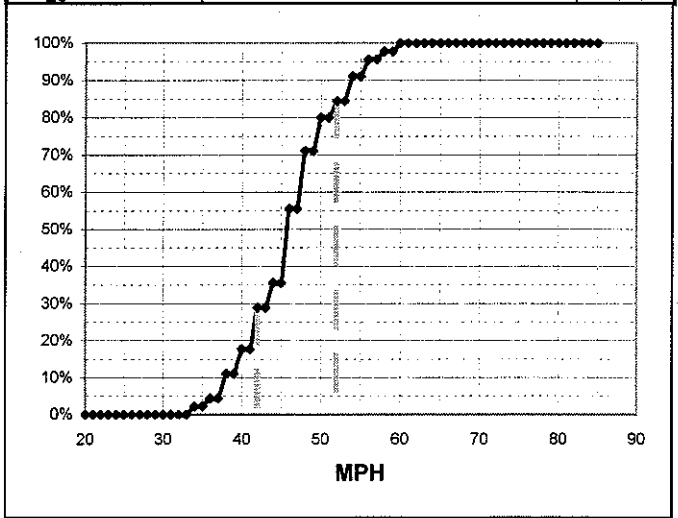
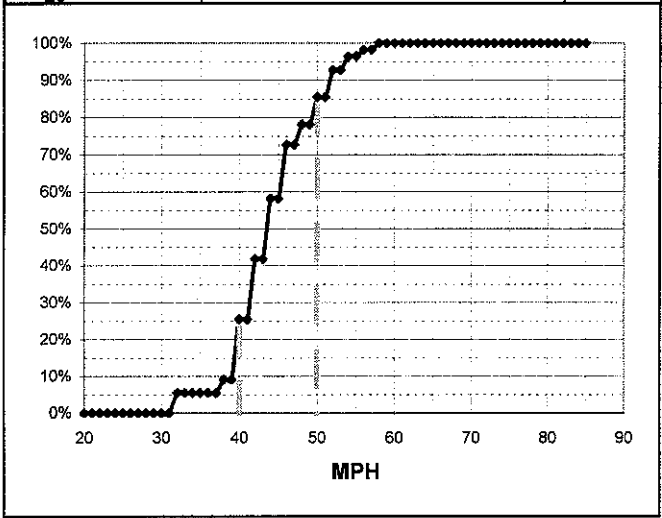
Observer: Lori Lackey Calcs: Frank Hogue

Critical Speed :	<u>50</u>	<u>mph</u>
Average Speed :	<u>44.5</u>	<u>mph</u>
Median Speed :	<u>44</u>	<u>mph</u>
Standard Deviation:	<u>5.5</u>	<u>mph</u>
Pace Range :	<u>40 - 50</u>	<u>mph</u>
Percent in Pace :	<u>69.1%</u>	
Total # Vehicles :	<u>55</u>	

Posted Speed:	<u>45</u>	
Weather:	<u>Sunny &amp; Dry</u>	
Critical Speed :	<u>54</u>	<u>mph</u>
Average Speed :	<u>46.5</u>	<u>mph</u>
Median Speed :	<u>46</u>	<u>mph</u>
Standard Deviation:	<u>5.8</u>	<u>mph</u>
Pace Range :	<u>42 - 52</u>	<u>mph</u>
Percent in Pace :	<u>62.2%</u>	
Total # Vehicles :	<u>45</u>	

MPH	# of Veh.	Northbound	%
85			100.0%
84			100.0%
83			100.0%
82			100.0%
81			100.0%
80			100.0%
79			100.0%
78			100.0%
77			100.0%
76			100.0%
75			100.0%
74			100.0%
73			100.0%
72			100.0%
71			100.0%
70			100.0%
69			100.0%
68			100.0%
67			100.0%
66			100.0%
65			100.0%
64			100.0%
63			100.0%
62			100.0%
61			100.0%
60			100.0%
59			100.0%
58	1	◆	100.0%
57	1	◆	98.2%
56	1	◆	98.2%
55			96.4%
54	2	◆◆	96.4%
53			92.7%
52	4	◆◆◆◆	92.7%
51			85.5%
50	4	◆◆◆◆	85.5%
49			78.2%
48	3	◆◆◆	78.2%
47			72.7%
46	8	◆◆◆◆◆◆◆◆	72.7%
45			58.2%
44	9	◆◆◆◆◆◆◆◆◆	58.2%
43			41.8%
42	9	◆◆◆◆◆◆◆◆◆	41.8%
41			25.5%
40	9	◆◆◆◆◆◆◆◆◆	25.5%
39			9.1%
38	2	◆◆	9.1%
37			5.5%
36			5.5%
35			5.5%
34			5.5%
33			5.5%
32	3	◆◆◆	5.5%
31			0.0%
30			0.0%
29			0.0%
28			0.0%
27			0.0%
26			0.0%
25			0.0%
24			0.0%
23			0.0%
22			0.0%
21			0.0%
20			0.0%

MPH	No of Veh.	Southbound	%
85			100.0%
84			100.0%
83			100.0%
82			100.0%
81			100.0%
80			100.0%
79			100.0%
78			100.0%
77			100.0%
76			100.0%
75			100.0%
74			100.0%
73			100.0%
72			100.0%
71			100.0%
70			100.0%
69			100.0%
68			100.0%
67			100.0%
66			100.0%
65			100.0%
64			100.0%
63			100.0%
62			100.0%
61			100.0%
60	1	◆	100.0%
59			97.8%
58	1	◆	97.8%
57	1	◆	95.6%
56	2	◆◆	95.6%
55			91.1%
54	3	◆◆◆	91.1%
53			84.4%
52	2	◆◆	84.4%
51			80.0%
50	4	◆◆◆◆	80.0%
49			71.1%
48	7	◆◆◆◆◆◆◆	71.1%
47			55.6%
46	9	◆◆◆◆◆◆◆◆◆	55.6%
45			35.6%
44	3	◆◆◆	35.6%
43			28.9%
42	5	◆◆◆◆◆	28.9%
41			17.8%
40	3	◆◆◆	17.8%
39			11.1%
38	3	◆◆◆	11.1%
37			4.4%
36	1	◆	4.4%
35			2.2%
34	1	◆	2.2%
33			0.0%
32			0.0%
31			0.0%
30			0.0%
29			0.0%
28			0.0%
27			0.0%
26			0.0%
25			0.0%
24			0.0%
23			0.0%
22			0.0%
21			0.0%
20			0.0%



EASTSIDE ROAD S/ STAR DR

Observer: Lori Lackey

Calcs: Frank Hogue

Posted Speed: 45  
Weather: Sunny & Dry

Day: Friday  
Date: 9/12/03  
Time: 08:45 - 09:15

Critical Speed :	52	mph
Average Speed :	46.0	mph
Median Speed :	46	mph
Standard Deviation:	4.7	mph
Pace Range :	40 - 50	mph
Percent in Pace :	70.6%	
Total # Vehicles :	68	

Critical Speed :	52	mph
Average Speed :	46.4	mph
Median Speed :	46	mph
Standard Deviation:	5.4	mph
Pace Range :	42 - 52	mph
Percent in Pace :	68.8%	
Total # Vehicles :	32	

MPH	# of Veh.	Northbound	%
85			100.0%
84			100.0%
83			100.0%
82			100.0%
81			100.0%
80			100.0%
79			100.0%
78			100.0%
77			100.0%
76			100.0%
75			100.0%
74			100.0%
73			100.0%
72			100.0%
71			100.0%
70			100.0%
69			100.0%
68			100.0%
67			100.0%
66			100.0%
65			100.0%
64			100.0%
63			100.0%
62			100.0%
61			100.0%
60			100.0%
59			100.0%
58			100.0%
57			100.0%
56	2	♦♦	100.0%
55			97.1%
54	5	♦♦♦♦♦	97.1%
53			89.7%
52	6	♦♦♦♦♦♦	89.7%
51			80.9%
50	3	♦♦♦	80.9%
49			76.5%
48	10	♦♦♦♦♦♦♦♦♦♦	76.5%
47			61.8%
46	11	♦♦♦♦♦♦♦♦♦♦♦	61.8%
45			45.6%
44	13	♦♦♦♦♦♦♦♦♦♦♦♦	45.6%
43			26.5%
42	9	♦♦♦♦♦♦♦♦♦	26.5%
41			13.2%
40	5	♦♦♦♦♦	13.2%
39			5.9%
38	3	♦♦♦	5.9%
37			1.5%
36	1	♦	1.5%
35			0.0%
34			0.0%
33			0.0%
32			0.0%
31			0.0%
30			0.0%
29			0.0%
28			0.0%
27			0.0%
26			0.0%
25			0.0%
24			0.0%
23			0.0%
22			0.0%
21			0.0%
20			0.0%

MPH	No of Veh.	Southbound	%
85			100.0%
84			100.0%
83			100.0%
82			100.0%
81			100.0%
80			100.0%
79			100.0%
78			100.0%
77			100.0%
76			100.0%
75			100.0%
74			100.0%
73			100.0%
72			100.0%
71			100.0%
70			100.0%
69			100.0%
68			100.0%
67			100.0%
66			100.0%
65			100.0%
64			100.0%
63			100.0%
62			100.0%
61			100.0%
60	1	♦	100.0%
59			96.9%
58	1	♦	96.9%
57			93.8%
56			93.8%
55			93.8%
54	1	♦	93.8%
53			90.6%
52	2	♦♦	90.6%
51			84.4%
50	5	♦♦♦♦♦	84.4%
49			68.8%
48	4	♦♦♦♦	68.8%
47			56.3%
46	4	♦♦♦♦	56.3%
45			43.8%
44	5	♦♦♦♦♦	43.8%
43			28.1%
42	4	♦♦♦♦	28.1%
41			15.6%
40	3	♦♦♦	15.6%
39			6.3%
38	1	♦	6.3%
37			3.1%
36	1	♦	3.1%
35			0.0%
34			0.0%
33			0.0%
32			0.0%
31			0.0%
30			0.0%
29			0.0%
28			0.0%
27			0.0%
26			0.0%
25			0.0%
24			0.0%
23			0.0%
22			0.0%
21			0.0%
20			0.0%

