




**CITY OF REDDING
CERTIFIED EXTENSION
OF
ENGINEERING AND TRAFFIC SURVEY
FOR
GIRVAN ROAD**

For the determination of safe and reasonable speed zoning as required by Sections 22358 and 40802 of the California Vehicle Code (CVC), as defined by Section 627 of the CVC and in accordance with Section 2B. 13 of the California Manual on Uniform Traffic Control Devices, this Engineering and Traffic Survey (ETS) was initiated to verify or modify speed zones on Girvan Road.

Based on the results of this ETS (attached) and adoption of Ordinance Number 2465 by the City Council of the City of Redding, amending Redding Municipal Code Section 11.12.010, a speed zone on Girvan Road of 35 MPH from State Route 273 to Creekside Drive is established.

This ETS was reviewed by a Registered Engineer and no significant changes in roadway or traffic conditions have occurred, including, but not limited to, changes in adjoining property or land use, roadway width, or traffic volume since the original study date of preparation and is found to be in compliance with CVC 40802, valid until March 31, 2014.

 3/26/2012
Brian Crane, P. E.
Director of Public Works

ATTEST:

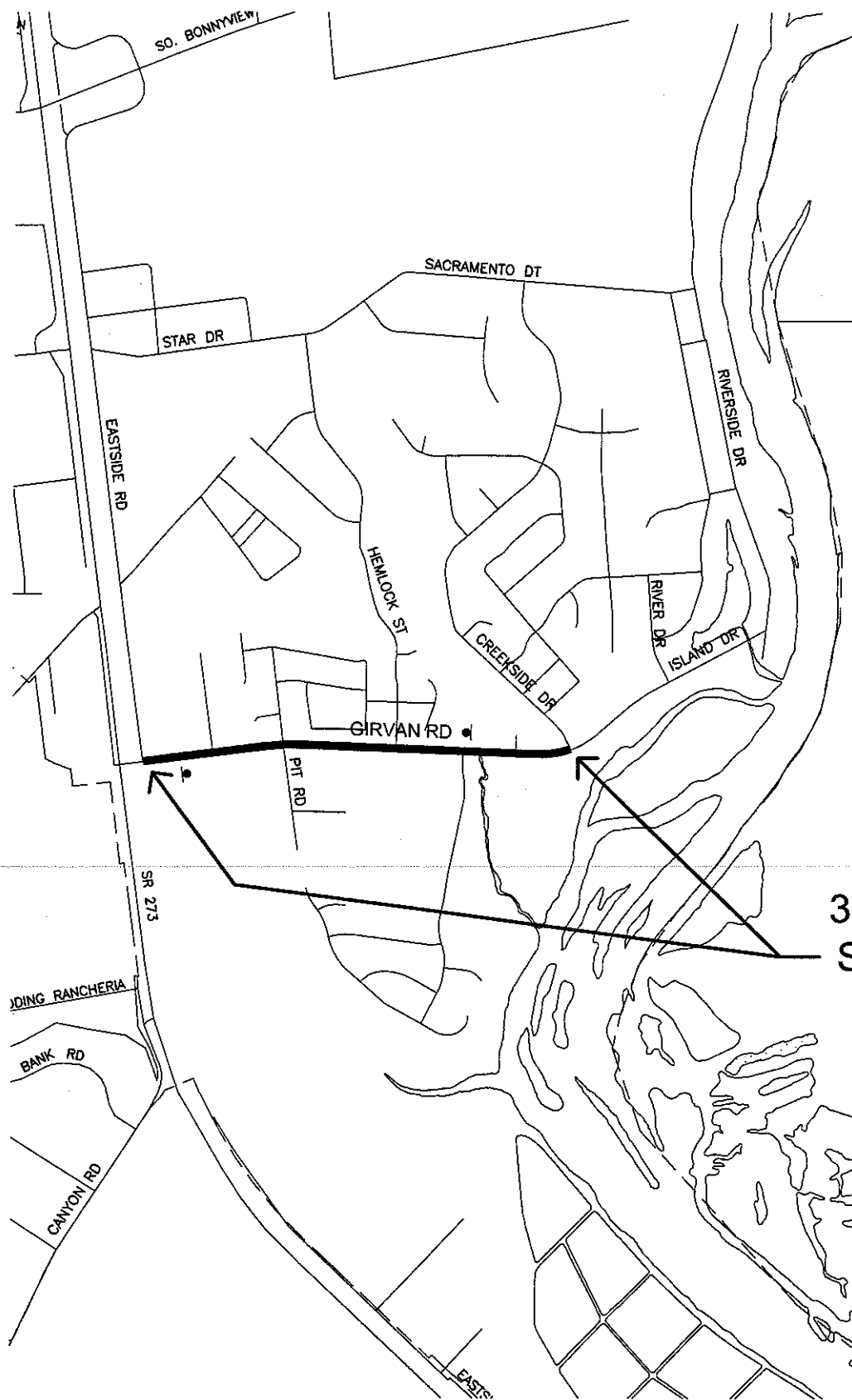
 3/26/12
PAMELA MIZE, City Clerk

**GIRVAN ROAD
MARCH 2004
CONDITION SUMMARY**

FROM LOCATION TO	EASTSIDE PIT	PIT CREEKSIDE
NO. OF LANES	2	2
ROADWAY WIDTH	VARIES	VARIES
LENGTH	1280'	2610'
ALIGNMENT HORIZONTAL	GENTLE CURVE	GENTLE CURVE
VERTICAL	FLAT	FLAT
DISTRICT	RESIDENTIAL	RESIDENTIAL
ADT	4,627	1,872
PEDESTRIANS	SOME	SOME
SIDEWALKS	45%	45%
DRIVEWAYS	SEVERAL	SEVERAL
SPEED RELATED ACCIDENTS	NOT SIGNIFICANT	NOT SIGNIFICANT
EXISTING SPEED ZONE	35 MPH	35 MPH
BALL BANK SPEED	N/A	N/A
85TH% SPEED	44 MPH	44 MPH
SURVEY CONCLUSION		
REASONABLE SPEED	*35 MPH	**35 MPH
ACTION		
CITY COUNCIL APPROVED	CITY ORDINANCE 2011	CITY ORDINANCE 2011
SIGNS POSTED	3/27/80	3/27/80

**ADDITIONAL
COMMENTS:**

*** DUE TO NARROWNESS OF ROAD. ** DUE TO
RESIDENTIAL NATURE OF ROADWAY AND
HORSEBACK RIDING ALONG SHOULDER.**



**35 MPH
SPEED
ZONE**

LEGEND

● SPEED LIMIT SIGN

CITY OF REDDING MUNICIPAL UTILITIES TRAFFIC OPERATIONS

GIRVAN RD SPEED STUDY
EASTSIDE RD TO CREEKSIDE DR



GIRVAN RD E/ DANYEUR

Day: Friday
 Posted Speed: 35 MPH Date: 9/12/03
 Weather: Sunny & Dry Time: 09:30 - 10:15

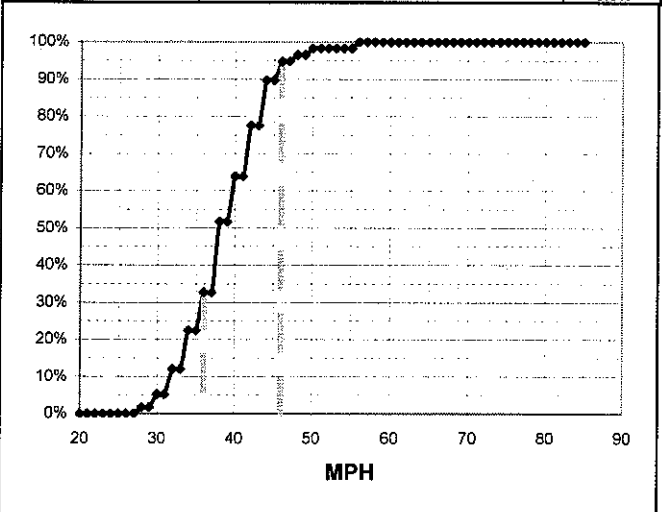
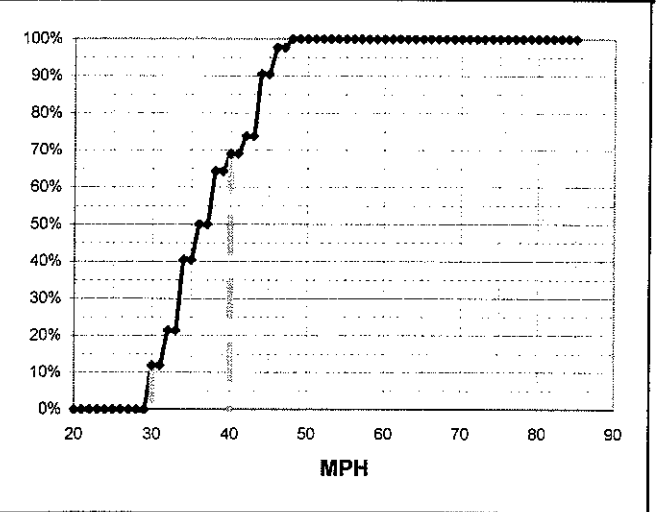
Observer: Lori Lackey Calcs: Frank Hogue

Critical Speed :	<u>44</u>	<u>mph</u>
Average Speed :	<u>37.6</u>	<u>mph</u>
Median Speed :	<u>0</u>	<u>mph</u>
Standard Deviation:	<u>5.3</u>	<u>mph</u>
Pace Range :	<u>30 - 40</u>	<u>mph</u>
Percent in Pace :	<u>64.3%</u>	
Total # Vehicles :	<u>42</u>	

Critical Speed :	<u>44</u>	<u>mph</u>
Average Speed :	<u>39.1</u>	<u>mph</u>
Median Speed :	<u>38</u>	<u>mph</u>
Standard Deviation:	<u>5.2</u>	<u>mph</u>
Pace Range :	<u>36 - 46</u>	<u>mph</u>
Percent in Pace :	<u>67.2%</u>	
Total # Vehicles :	<u>58</u>	

MPH	# of Veh.	Eastbound	%
85			100.0%
84			100.0%
83			100.0%
82			100.0%
81			100.0%
80			100.0%
79			100.0%
78			100.0%
77			100.0%
76			100.0%
75			100.0%
74			100.0%
73			100.0%
72			100.0%
71			100.0%
70			100.0%
69			100.0%
68			100.0%
67			100.0%
66			100.0%
65			100.0%
64			100.0%
63			100.0%
62			100.0%
61			100.0%
60			100.0%
59			100.0%
58			100.0%
57			100.0%
56			100.0%
55			100.0%
54			100.0%
53			100.0%
52			100.0%
51			100.0%
50			100.0%
49			100.0%
48	1	◆	100.0%
47	1	◆	97.6%
46	3	◆◆◆	97.6%
45	3	◆◆◆	90.5%
44	7	◆◆◆◆◆◆◆	90.5%
43	7	◆◆◆◆◆◆◆	73.8%
42	2	◆◆	73.8%
41	2	◆◆	69.0%
40	2	◆◆	69.0%
39	6	◆◆◆◆◆◆	64.3%
38	6	◆◆◆◆◆◆	64.3%
37	4	◆◆◆◆	50.0%
36	4	◆◆◆◆	50.0%
35	8	◆◆◆◆◆◆◆◆	40.5%
34	8	◆◆◆◆◆◆◆◆	40.5%
33	4	◆◆◆◆	21.4%
32	4	◆◆◆◆	21.4%
31	5	◆◆◆◆◆	11.9%
30	5	◆◆◆◆◆	11.9%
29			0.0%
28			0.0%
27			0.0%
26			0.0%
25			0.0%
24			0.0%
23			0.0%
22			0.0%
21			0.0%
20			0.0%

MPH	No of Veh.	Westbound	%
85			100.0%
84			100.0%
83			100.0%
82			100.0%
81			100.0%
80			100.0%
79			100.0%
78			100.0%
77			100.0%
76			100.0%
75			100.0%
74			100.0%
73			100.0%
72			100.0%
71			100.0%
70			100.0%
69			100.0%
68			100.0%
67			100.0%
66			100.0%
65			100.0%
64			100.0%
63			100.0%
62			100.0%
61			100.0%
60			100.0%
59			100.0%
58			100.0%
57			100.0%
56	1	◆	100.0%
55	1	◆	98.3%
54	1	◆	98.3%
53	1	◆	98.3%
52	1	◆	98.3%
51	1	◆	98.3%
50	1	◆	98.3%
49	1	◆	96.6%
48	1	◆	96.6%
47	1	◆	94.8%
46	3	◆◆◆	94.8%
45	3	◆◆◆	89.7%
44	7	◆◆◆◆◆◆◆	89.7%
43	7	◆◆◆◆◆◆◆	77.6%
42	8	◆◆◆◆◆◆◆◆	77.6%
41	7	◆◆◆◆◆◆◆	63.8%
40	7	◆◆◆◆◆◆◆	63.8%
39	11	◆◆◆◆◆◆◆◆◆◆	51.7%
38	11	◆◆◆◆◆◆◆◆◆◆	51.7%
37	6	◆◆◆◆◆◆	32.8%
36	6	◆◆◆◆◆◆	32.8%
35	6	◆◆◆◆◆◆	22.4%
34	6	◆◆◆◆◆◆	22.4%
33	4	◆◆◆◆	12.1%
32	4	◆◆◆◆	12.1%
31	2	◆◆	5.2%
30	2	◆◆	5.2%
29			1.7%
28	1	◆	1.7%
27			0.0%
26			0.0%
25			0.0%
24			0.0%
23			0.0%
22			0.0%
21			0.0%
20			0.0%



GIRVAN RD W/ MINNOW CT

Day: Friday
 Date: 9/12/03
 Time: 10:30 - 11:30

Observer: Lori Lackey

Calcs: Frank Hogue

Posted Speed: 35 MPH
 Weather: Sunny & Dry

Critical Speed :	<u>44</u>	<u>mph</u>
Average Speed :	<u>38.7</u>	<u>mph</u>
Median Speed :	<u>38</u>	<u>mph</u>
Standard Deviation:	<u>3.8</u>	<u>mph</u>
Pace Range :	<u>36 - 46</u>	<u>mph</u>
Percent in Pace :	<u>80.0%</u>	
Total # Vehicles :	<u>40</u>	

Critical Speed :	<u>44</u>	<u>mph</u>
Average Speed :	<u>38.0</u>	<u>mph</u>
Median Speed :	<u>38</u>	<u>mph</u>
Standard Deviation:	<u>4.9</u>	<u>mph</u>
Pace Range :	<u>36 - 46</u>	<u>mph</u>
Percent in Pace :	<u>70.2%</u>	
Total # Vehicles :	<u>47</u>	

MPH	# of Veh.	Eastbound	%
85			100.0%
84			100.0%
83			100.0%
82			100.0%
81			100.0%
80			100.0%
79			100.0%
78			100.0%
77			100.0%
76			100.0%
75			100.0%
74			100.0%
73			100.0%
72			100.0%
71			100.0%
70			100.0%
69			100.0%
68			100.0%
67			100.0%
66			100.0%
65			100.0%
64			100.0%
63			100.0%
62			100.0%
61			100.0%
60			100.0%
59			100.0%
58			100.0%
57			100.0%
56			100.0%
55			100.0%
54			100.0%
53			100.0%
52			100.0%
51			100.0%
50			100.0%
49			100.0%
48			100.0%
47			100.0%
46	3	◆◆◆	100.0%
45			92.5%
44	3	◆◆◆	92.5%
43			85.0%
42	5	◆◆◆◆◆	85.0%
41			72.5%
40	5	◆◆◆◆◆	72.5%
39			60.0%
38	10	◆◆◆◆◆◆◆◆◆◆	60.0%
37			35.0%
36	9	◆◆◆◆◆◆◆◆◆	35.0%
35			12.5%
34	2	◆◆	12.5%
33			7.5%
32	2	◆◆	7.5%
31			2.5%
30	1	◆	2.5%
29			0.0%
28			0.0%
27			0.0%
26			0.0%
25			0.0%
24			0.0%
23			0.0%
22			0.0%
21			0.0%
20			0.0%

MPH	No of Veh.	Westbound	%
85			100.0%
84			100.0%
83			100.0%
82			100.0%
81			100.0%
80			100.0%
79			100.0%
78			100.0%
77			100.0%
76			100.0%
75			100.0%
74			100.0%
73			100.0%
72			100.0%
71			100.0%
70			100.0%
69			100.0%
68			100.0%
67			100.0%
66			100.0%
65			100.0%
64			100.0%
63			100.0%
62			100.0%
61			100.0%
60			100.0%
59			100.0%
58			100.0%
57			100.0%
56			100.0%
55			100.0%
54			100.0%
53			100.0%
52			100.0%
51			100.0%
50	1	◆	100.0%
49			97.9%
48	1	◆	97.9%
47			95.7%
46	1	◆	95.7%
45			93.6%
44	6	◆◆◆◆◆◆	93.6%
43			80.9%
42	2	◆◆	80.9%
41			76.6%
40	9	◆◆◆◆◆◆◆◆◆	76.6%
39			57.4%
38	4	◆◆◆◆	57.4%
37			48.9%
36	12	◆◆◆◆◆◆◆◆◆◆◆◆	48.9%
35			23.4%
34	3	◆◆◆	23.4%
33			17.0%
32	4	◆◆◆◆	17.0%
31			8.5%
30	3	◆◆◆	8.5%
29			2.1%
28	1	◆	2.1%
27			0.0%
26			0.0%
25			0.0%
24			0.0%
23			0.0%
22			0.0%
21			0.0%
20			0.0%

