

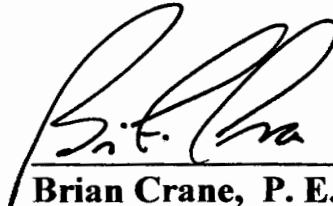


**CITY OF REDDING
CERTIFIED EXTENSION
OF
ENGINEERING AND TRAFFIC SURVEY
FOR
RADIO LANE**

For the determination of safe and reasonable speed zoning as required by Sections 22358 and 40802 of the California Vehicle Code (CVC), as defined by Section 627 of the CVC and in accordance with Section 2B. 13 of the California Manual on Uniform Traffic Control Devices, this Engineering and Traffic Survey (ETS) was initiated to verify or modify speed zones on Radio Lane.

Based on the results of this ETS (attached) and adoption of Ordinance Number 2465 by the City Council of the City of Redding, amending Redding Municipal Code Section 11.12.010, a speed zone on Radio Lane of 35 MPH from Eastside Road to East Bonnyview Road is established.

This ETS was reviewed by a Registered Engineer and no significant changes in roadway or traffic conditions have occurred, including, but not limited to, changes in adjoining property or land use, roadway width, or traffic volume since the original study date of preparation and is found to be in compliance with CVC 40802, valid until March 31, 2014.


3/26/2012

**Brian Crane, P. E.
Director of Public Works**

ATTEST:

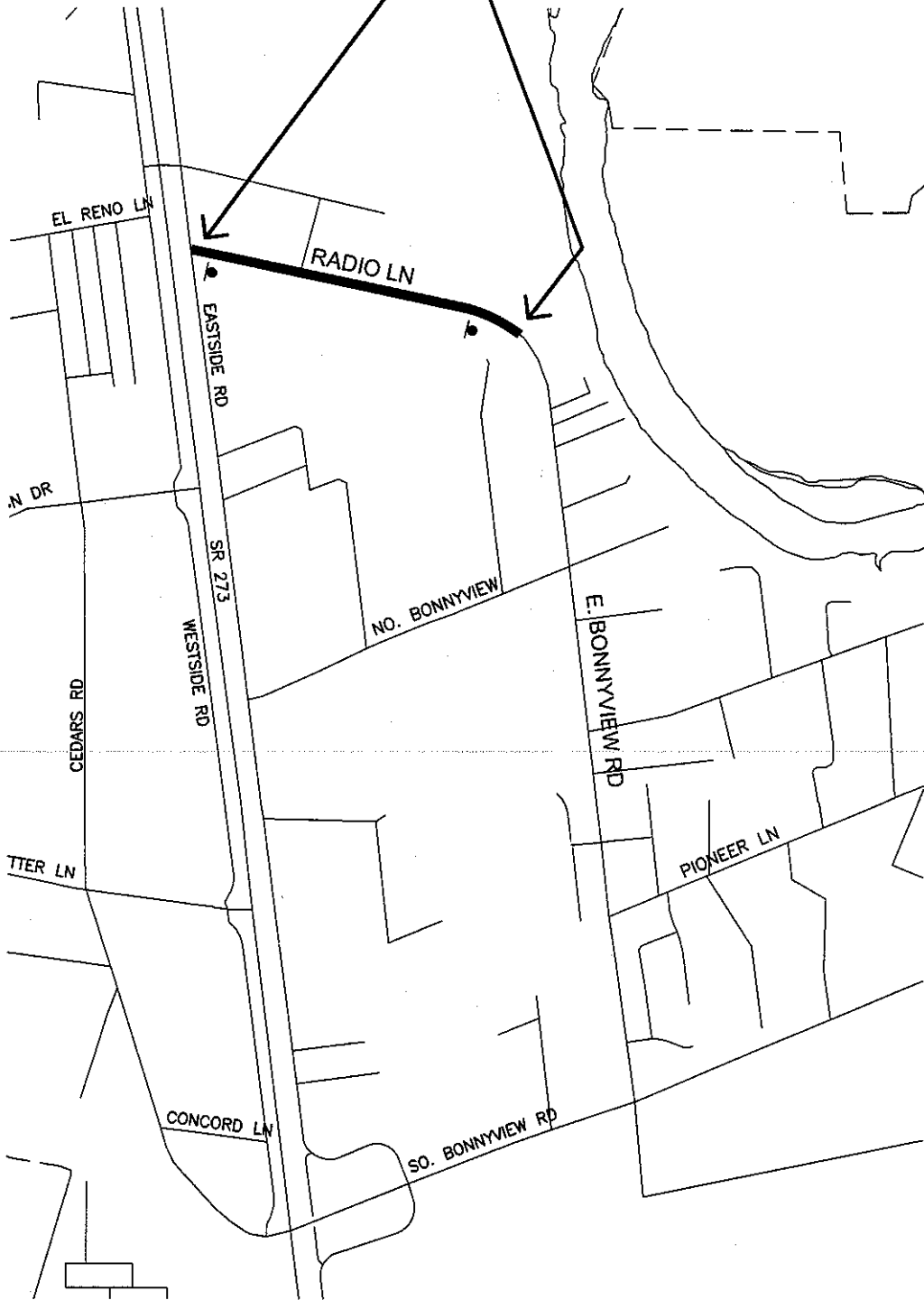

PAMELA MIZE, City Clerk

**RADIO LANE
MARCH 2004
CONDITION SUMMARY**

FROM	EASTSIDE	
LOCATION		
TO	E. BONNYVIEW	
NO. OF LANES	2	
WIDTH	28'	
ROADWAY		
LENGTH	2,530	
HORIZONTAL	STRAIGHT	
ALIGNMENT		
VERTICAL	FLAT	
DISTRICT	RESIDENTIAL	
ADT	2,700	
PEDESTRIANS	FEW	
SIDEWALKS	5%	
DRIVEWAYS	NUMEROUS	
SPEED RELATED ACCIDENTS	NOT SIGNIFICANT	
EXISTING SPEED ZONE	35 MPH	
BALL BANK SPEED	N/A	
85TH% SPEED	40 MPH	
SURVEY CONCLUSION		
REASONABLE SPEED	35 MPH	
ACTION		
CITY COUNCIL APPROVED	CITY ORDINANCE 2011	
SIGNS POSTED	3/27/80	

**ADDITIONAL
COMMENTS:**

35 MPH
SPEED
ZONE



LEGEND

● SPEED LIMIT SIGN

CITY OF REDDING MUNICIPAL UTILITIES TRAFFIC OPERATIONS



RADIO LN SPEED STUDY
EASTSIDE RD TO E. BONNYVIEW RD



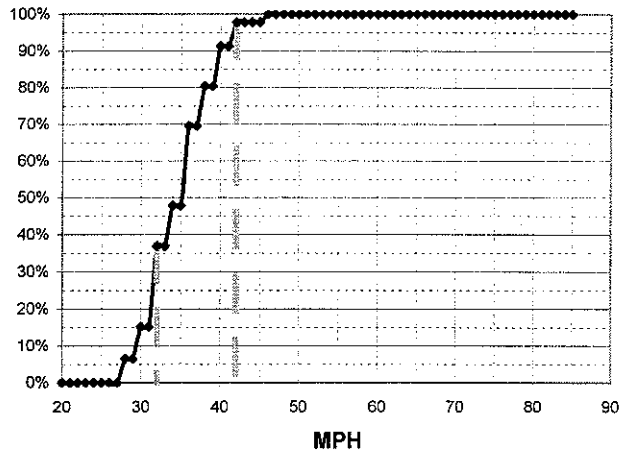
RADIO LN E/ EASTSIDE RD

Observer: Lori Lackey

Calcs: Frank Hogue

Critical Speed :	40	mph
Average Speed :	35.1	mph
Median Speed :	36	mph
Standard Deviation:	4.1	mph
Pace Range :	32 - 42	mph
Percent in Pace :	76.1%	
Total # Vehicles :	46	

MPH	# of Veh.	Eastbound	%
85			100.0%
84			100.0%
83			100.0%
82			100.0%
81			100.0%
80			100.0%
79			100.0%
78			100.0%
77			100.0%
76			100.0%
75			100.0%
74			100.0%
73			100.0%
72			100.0%
71			100.0%
70			100.0%
69			100.0%
68			100.0%
67			100.0%
66			100.0%
65			100.0%
64			100.0%
63			100.0%
62			100.0%
61			100.0%
60			100.0%
59			100.0%
58			100.0%
57			100.0%
56			100.0%
55			100.0%
54			100.0%
53			100.0%
52			100.0%
51			100.0%
50			100.0%
49			100.0%
48			100.0%
47			100.0%
46	1	◆	100.0%
45			97.8%
44			97.8%
43			97.8%
42	3	◆◆◆	97.8%
41			91.3%
40	5	◆◆◆◆◆	91.3%
39			80.4%
38	5	◆◆◆◆◆	80.4%
37			69.6%
36	10	◆◆◆◆◆◆◆◆	69.6%
35			47.8%
34	5	◆◆◆◆◆	47.8%
33			37.0%
32	10	◆◆◆◆◆◆◆◆	37.0%
31			15.2%
30	4	◆◆◆◆	15.2%
29			6.5%
28	3	◆◆◆	6.5%
27			0.0%
26			0.0%
25			0.0%
24			0.0%
23			0.0%
22			0.0%
21			0.0%
20			0.0%



Day: Wednesday

Date: 9/10/03

Time: 10:00 - 10:45

Posted Speed: 35

Weather: Sunny & Dry

Critical Speed : 42 mph

Average Speed : 36.9 mph

Median Speed : 36 mph

Standard Deviation: 4.7 mph

Pace Range : 32 - 42 mph

Percent in Pace : 70.4%

Total # Vehicles : 54

MPH	No of Veh.	Westbound	%
85			100.0%
84			100.0%
83			100.0%
82			100.0%
81			100.0%
80			100.0%
79			100.0%
78			100.0%
77			100.0%
76			100.0%
75			100.0%
74			100.0%
73			100.0%
72			100.0%
71			100.0%
70			100.0%
69			100.0%
68			100.0%
67			100.0%
66			100.0%
65			100.0%
64			100.0%
63			100.0%
62			100.0%
61			100.0%
60			100.0%
59			100.0%
58			100.0%
57			100.0%
56			100.0%
55			100.0%
54			100.0%
53			100.0%
52			100.0%
51			100.0%
50			100.0%
49			100.0%
48			100.0%
47			100.0%
46	4	◆◆◆◆	100.0%
45			92.6%
44	2	◆◆	92.6%
43			88.9%
42	4	◆◆◆◆	88.9%
41			81.5%
40	8	◆◆◆◆◆◆◆◆	81.5%
39			66.7%
38	7	◆◆◆◆◆◆◆	66.7%
37			53.7%
36	9	◆◆◆◆◆◆◆◆	53.7%
35			37.0%
34	7	◆◆◆◆◆◆◆	37.0%
33			24.1%
32	7	◆◆◆◆◆◆◆	24.1%
31			11.1%
30	5	◆◆◆◆◆	11.1%
29			1.9%
28	1	◆	1.9%
27			0.0%
26			0.0%
25			0.0%
24			0.0%
23			0.0%
22			0.0%
21			0.0%
20			0.0%

