

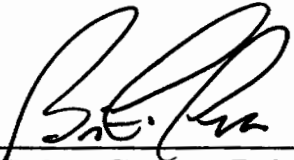


**CITY OF REDDING
CERTIFIED EXTENSION
OF
ENGINEERING AND TRAFFIC SURVEY
FOR
RAILROAD AVENUE**

For the determination of safe and reasonable speed zoning as required by Sections 22358 and 40802 of the California Vehicle Code (CVC), as defined by Section 627 of the CVC and in accordance with Section 2B. 13 of the California Manual on Uniform Traffic Control Devices, this Engineering and Traffic Survey (ETS) was initiated to verify or modify speed zones on Railroad Avenue.

Based on the results of this ETS (attached) and adoption of Ordinance Number 2465 by the City Council of the City of Redding, amending Redding Municipal Code Section 11.12.010, a speed zone on Avenue of 40 MPH from Buenaventura Boulevard to Schley Avenue is established, and a speed zone of 35 MPH from Schley Avenue to South Street is established.

This ETS was reviewed by a Registered Engineer and no significant changes in roadway or traffic conditions have occurred, including, but not limited to, changes in adjoining property or land use, roadway width, or traffic volume since the original study date of preparation and is found to be in compliance with CVC 40802, valid until March 31, 2014.


3/26/2012
Brian Crane, P. E.
Director of Public Works

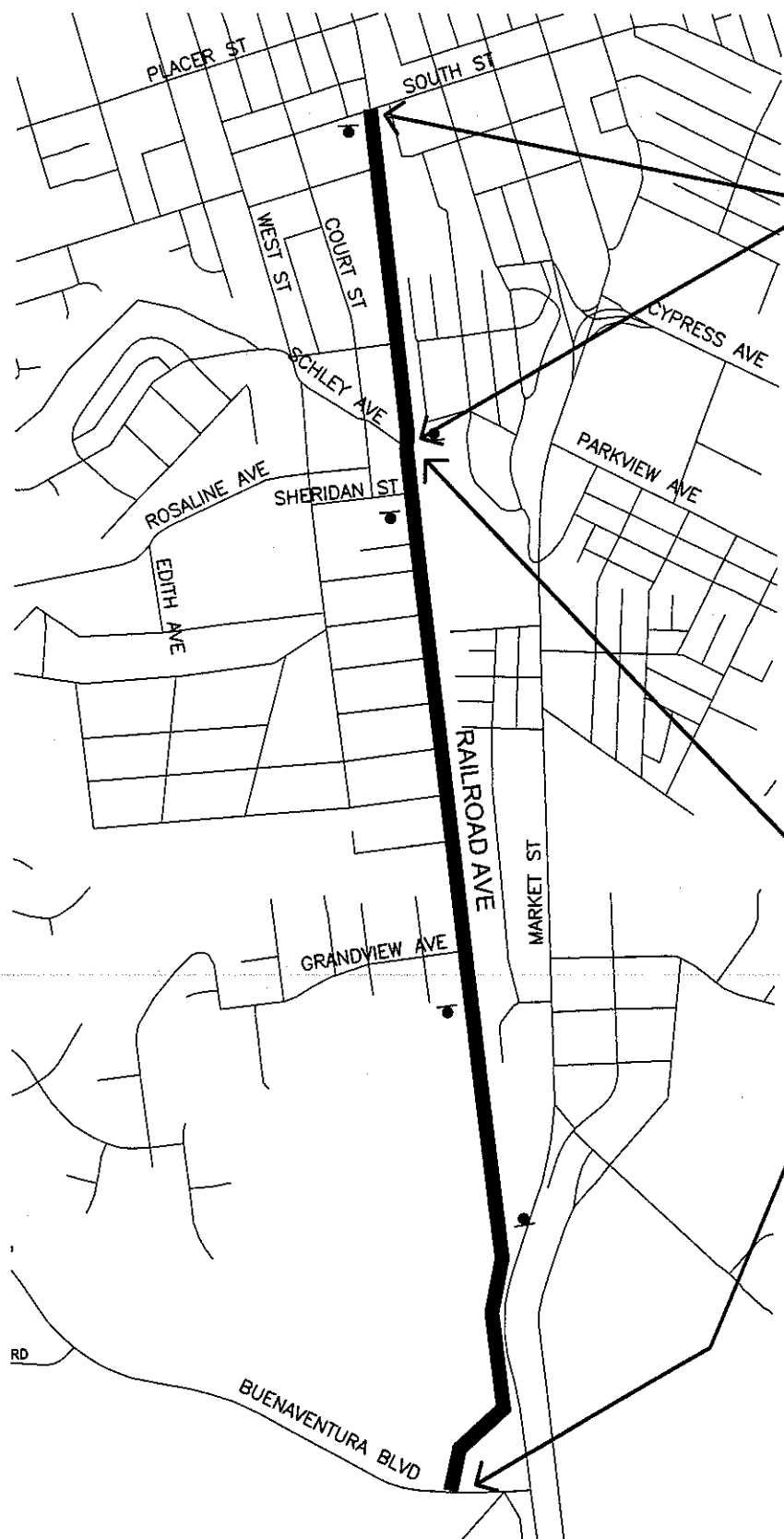

3/26/12
PAMELA MIZE, City Clerk

**RAILROAD AVENUE
MARCH 2004
CONDITION SUMMARY**

FROM	BUENAVENTURA	SCHLEY
LOCATION	SCHLEY	SOUTH
TO	SCHLEY	SOUTH
NO. OF LANES	2	2
ROADWAY WIDTH	30'	24'
ROADWAY LENGTH	1.36 MI.	2240'
ALIGNMENT HORIZONTAL	CURVES	STRAIGHT
ALIGNMENT VERTICAL	DIPS	FLAT
DISTRICT	BUSINESS	BUSINESS
ADT	8,900	3,897
PEDESTRIANS	NUMEROUS	FEW
SIDEWALKS	5%	5%
DRIVEWAYS	NUMEROUS	NUMEROUS
SPEED RELATED ACCIDENTS	NOT SIGNIFICANT	NOT SIGNIFICANT
EXISTING SPEED ZONE	40 MPH	35 MPH
BALL BANK SPEED	N/A	N/A
85TH% SPEED	48 MPH	40 MPH
SURVEY CONCLUSION		
REASONABLE SPEED	*40 MPH	35 MPH
ACTION		
CITY COUNCIL APPROVED	CITY ORDINANCE 2011	CITY ORDINANCE 2011
SIGNS POSTED	1/6/75	5/13/80

ADDITIONAL COMMENTS:

*** BASED ON PEDESTRIAN TRAFFIC, LOW PERCENTAGE OF SIDEWALKS, AND VERTICAL ALIGNMENT WITH NUMEROUS INTERSECTIONS.**



35 MPH
SPEED
ZONE

40 MPH
SPEED
ZONE

LEGEND

● SPEED LIMIT SIGN

CITY OF REDDING MUNICIPAL UTILITIES TRAFFIC OPERATIONS

RAILROAD AVE SPEED STUDY
BUENAVENTURA BLVD TO SOUTH ST



RAILROAD AVE N/ SONOMA ST

Observer: Lori Lackey
Calcs: Frank Hogue

Posted Speed: 35
Weather: Sunny

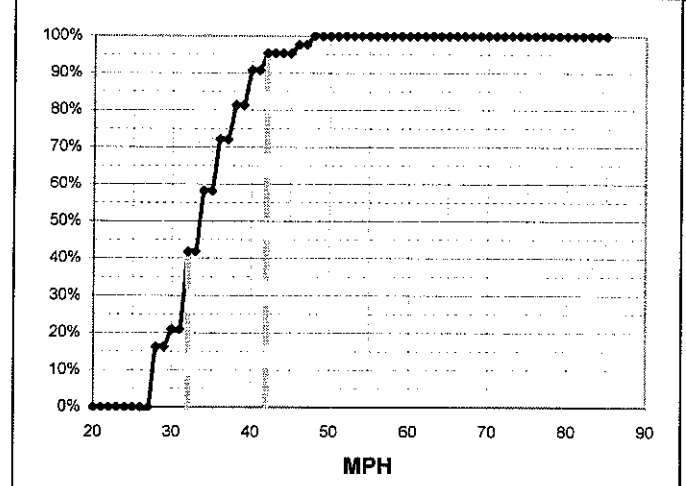
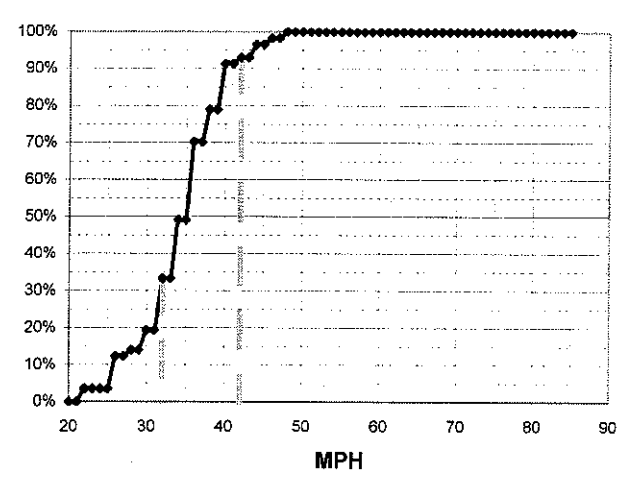
Day: Thursday
Date: 9/4/03
Time: 09:00 - 09:50

Critical Speed :	40	mph
Average Speed :	34.7	mph
Median Speed :	36	mph
Standard Deviation:	5.4	mph
Pace Range :	32 - 42	mph
Percent in Pace :	71.9%	
Total # Vehicles :	57	

Critical Speed :	40	mph
Average Speed :	34.6	mph
Median Speed :	34	mph
Standard Deviation:	4.8	mph
Pace Range :	32 - 42	mph
Percent in Pace :	69.8%	
Total # Vehicles :	43	

MPH	# of Veh.	Northbound	%
85			100.0%
84			100.0%
83			100.0%
82			100.0%
81			100.0%
80			100.0%
79			100.0%
78			100.0%
77			100.0%
76			100.0%
75			100.0%
74			100.0%
73			100.0%
72			100.0%
71			100.0%
70			100.0%
69			100.0%
68			100.0%
67			100.0%
66			100.0%
65			100.0%
64			100.0%
63			100.0%
62			100.0%
61			100.0%
60			100.0%
59			100.0%
58			100.0%
57			100.0%
56			100.0%
55			100.0%
54			100.0%
53			100.0%
52			100.0%
51			100.0%
50			100.0%
49			100.0%
48	1	◆	100.0%
47	1	◆	98.2%
46	1	◆	98.2%
45			96.5%
44	2	◆◆	96.5%
43			93.0%
42	1	◆	93.0%
41			91.2%
40	7	◆◆◆◆◆◆◆	91.2%
39			78.9%
38	5	◆◆◆◆◆	78.9%
37			70.2%
36	12	◆◆◆◆◆◆◆◆◆◆◆◆	70.2%
35			49.1%
34	9	◆◆◆◆◆◆◆◆◆	49.1%
33			33.3%
32	8	◆◆◆◆◆◆◆◆	33.3%
31			19.3%
30	3	◆◆◆	19.3%
29			14.0%
28	1	◆	14.0%
27			12.3%
26	5	◆◆◆◆◆	12.3%
25			3.5%
24			3.5%
23			3.5%
22	2	◆◆	3.5%
21			0.0%
20			0.0%

MPH	No of Veh.	Southbound	%
85			100.0%
84			100.0%
83			100.0%
82			100.0%
81			100.0%
80			100.0%
79			100.0%
78			100.0%
77			100.0%
76			100.0%
75			100.0%
74			100.0%
73			100.0%
72			100.0%
71			100.0%
70			100.0%
69			100.0%
68			100.0%
67			100.0%
66			100.0%
65			100.0%
64			100.0%
63			100.0%
62			100.0%
61			100.0%
60			100.0%
59			100.0%
58			100.0%
57			100.0%
56			100.0%
55			100.0%
54			100.0%
53			100.0%
52			100.0%
51			100.0%
50			100.0%
49			100.0%
48	1	◆	100.0%
47	1	◆	97.7%
46	1	◆	97.7%
45			95.3%
44			95.3%
43			95.3%
42	2	◆◆	95.3%
41			90.7%
40	4	◆◆◆◆	90.7%
39			81.4%
38	4	◆◆◆◆	81.4%
37			72.1%
36	6	◆◆◆◆◆◆	72.1%
35			58.1%
34	7	◆◆◆◆◆◆◆	58.1%
33			41.9%
32	9	◆◆◆◆◆◆◆◆◆	41.9%
31			20.9%
30	2	◆◆	20.9%
29			16.3%
28	7	◆◆◆◆◆◆◆	16.3%
27			0.0%
26			0.0%
25			0.0%
24			0.0%
23			0.0%
22			0.0%
21			0.0%
20			0.0%



RAILROAD AVE S/ GRANDVIEW AVE

Day: Friday
 Date: 9/5/03
 Time: 09:00 - 09:37

Observer: Lori Lackey

Calcs: Frank Hogue

Posted Speed: 40
 Weather: Sunny & Dry

Critical Speed :	48	mph
Average Speed :	44.6	mph
Median Speed :	44	mph
Standard Deviation:	4.3	mph
Pace Range :	40 - 50	mph
Percent in Pace :	80.0%	
Total # Vehicles :	50	

Critical Speed :	48	mph
Average Speed :	43.2	mph
Median Speed :	42	mph
Standard Deviation:	3.7	mph
Pace Range :	40 - 50	mph
Percent in Pace :	82.0%	
Total # Vehicles :	50	

MPH	# of Veh.	Northbound	%
85			100.0%
84			100.0%
83			100.0%
82			100.0%
81			100.0%
80			100.0%
79			100.0%
78			100.0%
77			100.0%
76			100.0%
75			100.0%
74			100.0%
73			100.0%
72			100.0%
71			100.0%
70			100.0%
69			100.0%
68			100.0%
67			100.0%
66			100.0%
65			100.0%
64			100.0%
63			100.0%
62			100.0%
61			100.0%
60			100.0%
59			100.0%
58			100.0%
57			100.0%
56			100.0%
55			100.0%
54	2	♦♦	100.0%
53			96.0%
52	2	♦♦	96.0%
51			92.0%
50	2	♦♦	92.0%
49			88.0%
48	8	♦♦♦♦♦♦♦♦	88.0%
47			72.0%
46	7	♦♦♦♦♦♦♦	72.0%
45			58.0%
44	12	♦♦♦♦♦♦♦♦♦♦♦♦	58.0%
43			34.0%
42	9	♦♦♦♦♦♦♦♦♦	34.0%
41			16.0%
40	4	♦♦♦♦	16.0%
39			8.0%
38	2	♦♦	8.0%
37			4.0%
36	1	♦	4.0%
35			2.0%
34			2.0%
33			2.0%
32	1	♦	2.0%
31			0.0%
30			0.0%
29			0.0%
28			0.0%
27			0.0%
26			0.0%
25			0.0%
24			0.0%
23			0.0%
22			0.0%
21			0.0%
20			0.0%

MPH	No of Veh.	Southbound	%
85			100.0%
84			100.0%
83			100.0%
82			100.0%
81			100.0%
80			100.0%
79			100.0%
78			100.0%
77			100.0%
76			100.0%
75			100.0%
74			100.0%
73			100.0%
72			100.0%
71			100.0%
70			100.0%
69			100.0%
68			100.0%
67			100.0%
66			100.0%
65			100.0%
64			100.0%
63			100.0%
62			100.0%
61			100.0%
60			100.0%
59			100.0%
58			100.0%
57			100.0%
56			100.0%
55			100.0%
54			100.0%
53			100.0%
52			100.0%
51			100.0%
50	4	♦♦♦♦	100.0%
49			92.0%
48	5	♦♦♦♦♦	92.0%
47			82.0%
46	7	♦♦♦♦♦♦♦	82.0%
45			68.0%
44	8	♦♦♦♦♦♦♦♦	68.0%
43			52.0%
42	11	♦♦♦♦♦♦♦♦♦♦♦	52.0%
41			30.0%
40	10	♦♦♦♦♦♦♦♦♦♦	30.0%
39			10.0%
38	2	♦♦	10.0%
37			6.0%
36	3	♦♦♦	6.0%
35			0.0%
34			0.0%
33			0.0%
32			0.0%
31			0.0%
30			0.0%
29			0.0%
28			0.0%
27			0.0%
26			0.0%
25			0.0%
24			0.0%
23			0.0%
22			0.0%
21			0.0%
20			0.0%

