




**CITY OF REDDING  
ENGINEERING AND TRAFFIC SURVEY  
OF  
SHASTA VIEW DRIVE**

**FEBRUARY 28, 2007**

**For the determination of safe and reasonable speed zoning as required by Sections 22358 and 40802 of the California Vehicle Code (CVC), as defined by Section 627 of the CVC and in accordance with Section 2B. 13 of the California Manual on Uniform Traffic Control Devices, this Engineering and Traffic Survey (ETS) was initiated to verify or modify speed zones on Shasta View Drive.**

**Based on the results of this ETS (attached) and adoption of Ordinance Number 2465 by the City Council of the City of Redding, amending Redding Municipal Code Section 11.12.010, a speed zone on Shasta View Drive of 45 MPH from College View Drive to Old Alturas Road is established, and a speed zone of 40 MPH from Old Alturas Road to State Route 44 is established, and a speed zone of 30 MPH from State Route 44 to Hartnell Avenue is established, and a speed zone of 40 MPH from Hartnell Avenue to Rancho Road is established.**

**In accordance with Redding Municipal Code 11.08.010, appropriate signs giving notice of the above speed zoning shall be placed and the stated speed limit(s) shall be effective upon the placement of such signs.**

  
Brian Crane 3/26/2012  
Brian Crane, P. E.  
Director of Public Works

  
PAMELA MIZE, City Clerk 3/26/12

PAMELA MIZE, City Clerk

**SHASTA VIEW DR  
FEBRUARY 2007  
CONDITION SUMMARY**

FROM LOCATION TO	COLLEGE VIEW OLD ALTURAS	OLD ALTURAS SR 44	SR 44 HARTNELL
NO. OF LANES	3	2	2
WIDTH, FT. ROADWAY	VARIES	VARIES	VARIES
LENGTH, FT.	2.2 MI.	1.16 MI.	3350
HORIZONTAL ALIGNMENT	GENTLE CURVES	STRAIGHT	STRAIGHT
VERTICAL	FLAT	FLAT	FLAT
DISTRICT	RESIDENTIAL	RESIDENTIAL	RESIDENTIAL
ADT	4,900	11,300	13,500
PEDESTRIANS	FEW	SOME	MANY
SIDEWALKS	10%	95%	NONE
BIKE LANE/ROUTE	BIKE ROUTE	BIKE ROUTE	BIKE ROUTE
DRIVEWAYS	NONE	NONE	NUMEROUS
SPEED RELATED ACCIDENTS	2 IN 2 YRS NOT SIGNIFICANT	2 IN 2 YRS NOT SIGNIFICANT	10 IN 2 YRS SIGNIFICANT
EXISTING SPEED ZONING	40	40	30
10 MPH PACE RANGE	40 - 50	38 - 48	30 - 40
85TH% SPEED	50	46	38

**SURVEY CONCLUSION**

REASONABLE SPEED, MPH	45	*40	**30
-----------------------	----	-----	------

**ACTION**

PUBLIC WORKS APPROVED	RMC 11.08.010	RMC 11.08.010	RMC 11.08.010
SPEED POSTED	45 10/18/07	40 7/8/96	30 7/8/96

**ADDITIONAL COMMENTS**

\* A reduction in speed to match existing conditions with the traffic safety needs of the area. \*\*Due to pedestrians and conditions not readily apparent to drivers, as evidenced by the significant speed-related collision history.

**SHASTA VIEW DR  
FEBRUARY 2007  
CONDITION SUMMARY**

FROM LOCATION TO	HARTNELL  RANCHO		
NO. OF LANES	2		
WIDTH, FT. ROADWAY	VARIES		
LENGTH, FT.	2.94 MI.		
HORIZONTAL ALIGNMENT	GENTLE CURVES		
VERTICAL	FLAT		
DISTRICT	RESIDENTIAL		
ADT	5,300		
PEDESTRIANS	SOME		
SIDEWALKS	70%		
BIKE LANE/ROUTE	BIKE ROUTE		
DRIVEWAYS	NONE		
SPEED RELATED COLLISIONS	4 IN 2 YRS. NOT SIGNIFICANT		
EXISTING SPEED ZONING, MPH	40		
10 MPH PACE RANGE	38 - 48		
85TH% SPEED	46		
<b>SURVEY CONCLUSION</b>			
REASONABLE SPEED, MPH	*40		
<b>ACTION</b>			
PUBLIC WORKS APPROVED	RMC 11.08.010		
SPEED POSTED	40 7/8/96		

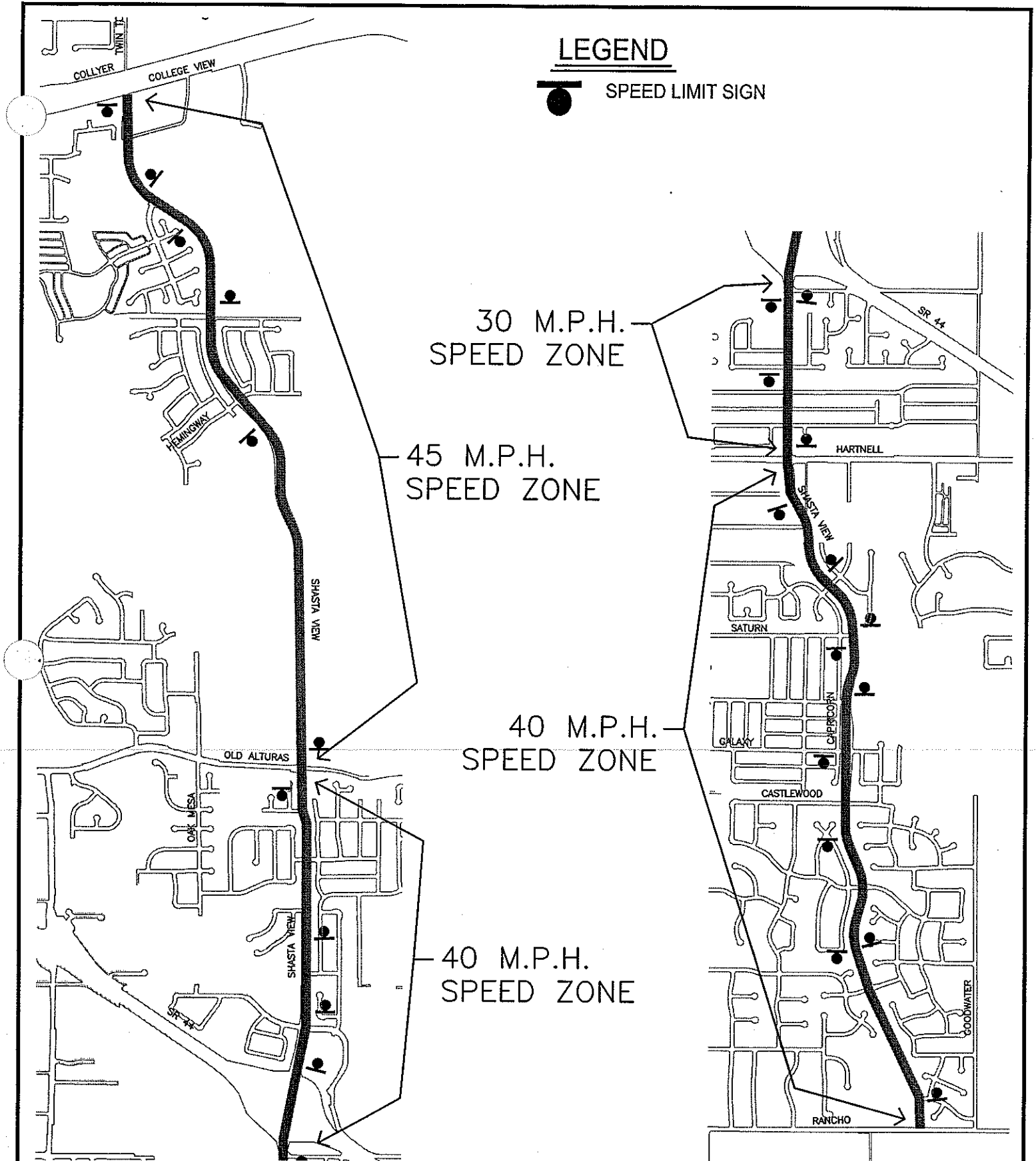
**ADDITIONAL  
COMMENTS:**

\* A reduction in speed to match existing conditions with the traffic safety needs of the area

# LEGEND



SPEED LIMIT SIGN



CITY OF REDDING TRANSPORTATION & ENGINEERING DIVISION FEBRUARY 2007



## SHASTA VIEW DR SPEED ZONES

COLLEGE VIEW DR TO RANCHO RD





SHASTA VIEW DR N/ VIKING WAY

Observer: Lori Lackey

Calcs: Frank Hogue

Posted Speed: 40  
Weather: Sunny & Dry

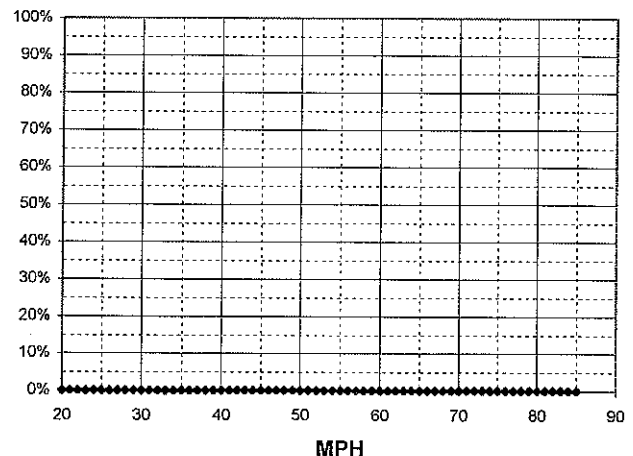
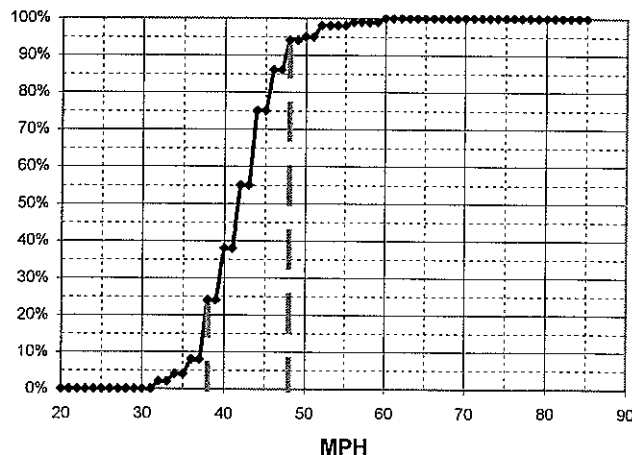
Day: Monday  
Date: 6/12/06  
Time: 10:55 - 11:20

Critical Speed :	46	mph
Average Speed :	42.5	mph
Median Speed :	42	mph
Standard Deviation:	4.7	mph
Pace Range :	38 - 48	mph
Percent in Pace :	78.0%	
Total # Vehicles :	100	

Critical Speed :	#DIV/0!	mph
Average Speed :	#DIV/0!	mph
Median Speed :	0	mph
Standard Deviation:	#DIV/0!	mph
Pace Range :	#DIV/0!	mph
Percent in Pace :	#DIV/0!	
Total # Vehicles :	0	

MPH	# of Veh.	Both Directions	%
85			100.0%
84			100.0%
83			100.0%
82			100.0%
81			100.0%
80			100.0%
79			100.0%
78			100.0%
77			100.0%
76			100.0%
75			100.0%
74			100.0%
73			100.0%
72			100.0%
71			100.0%
70			100.0%
69			100.0%
68			100.0%
67			100.0%
66			100.0%
65			100.0%
64			100.0%
63			100.0%
62			100.0%
61			100.0%
60	1	◆	100.0%
59			99.0%
58			99.0%
57	1	◆	99.0%
56			99.0%
55			98.0%
54			98.0%
53	3	◆◆◆	98.0%
52			98.0%
51			95.0%
50	1	◆	95.0%
49			94.0%
48	8	◆◆◆◆◆◆◆◆	94.0%
47			86.0%
46	14	◆◆◆◆◆◆◆◆◆◆	86.0%
45			75.0%
44	20	◆◆◆◆◆◆◆◆◆◆◆◆◆◆	75.0%
43			55.0%
42	17	◆◆◆◆◆◆◆◆◆◆◆◆◆◆	55.0%
41			38.0%
40	14	◆◆◆◆◆◆◆◆◆◆◆◆◆◆	38.0%
39			24.0%
38	16	◆◆◆◆◆◆◆◆◆◆◆◆◆◆	24.0%
37			8.0%
36	4	◆◆◆◆	8.0%
35			4.0%
34	2	◆◆	4.0%
33			2.0%
32	2	◆◆	2.0%
31			0.0%
30			0.0%
29			0.0%
28			0.0%
27			0.0%
26			0.0%
25			0.0%
24			0.0%
23			0.0%
22			0.0%
21			0.0%
20			0.0%

MPH	No of Veh.	%
85		#DIV/0!
84		#DIV/0!
83		#DIV/0!
82		#DIV/0!
81		#DIV/0!
80		#DIV/0!
79		#DIV/0!
78		#DIV/0!
77		#DIV/0!
76		#DIV/0!
75		#DIV/0!
74		#DIV/0!
73		#DIV/0!
72		#DIV/0!
71		#DIV/0!
70		#DIV/0!
69		#DIV/0!
68		#DIV/0!
67		#DIV/0!
66		#DIV/0!
65		#DIV/0!
64		#DIV/0!
63		#DIV/0!
62		#DIV/0!
61		#DIV/0!
60		#DIV/0!
59		#DIV/0!
58		#DIV/0!
57		#DIV/0!
56		#DIV/0!
55		#DIV/0!
54		#DIV/0!
53		#DIV/0!
52		#DIV/0!
51		#DIV/0!
50		#DIV/0!
49		#DIV/0!
48		#DIV/0!
47		#DIV/0!
46		#DIV/0!
45		#DIV/0!
44		#DIV/0!
43		#DIV/0!
42		#DIV/0!
41		#DIV/0!
40		#DIV/0!
39		#DIV/0!
38		#DIV/0!
37		#DIV/0!
36		#DIV/0!
35		#DIV/0!
34		#DIV/0!
33		#DIV/0!
32		#DIV/0!
31		#DIV/0!
30		#DIV/0!
29		#DIV/0!
28		#DIV/0!
27		#DIV/0!
26		#DIV/0!
25		#DIV/0!
24		#DIV/0!
23		#DIV/0!
22		#DIV/0!
21		#DIV/0!
20		#DIV/0!





SHASTA VIEW DR N/ GALAXY WAY

Observer: Lori Lackey

Calcs: Frank Hogue

Posted Speed: 40

Day: Thursday

Weather: Sunny & Dry

Date: 7/27/06

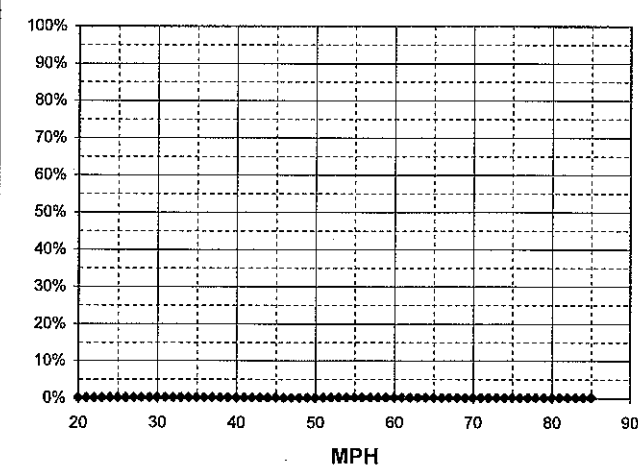
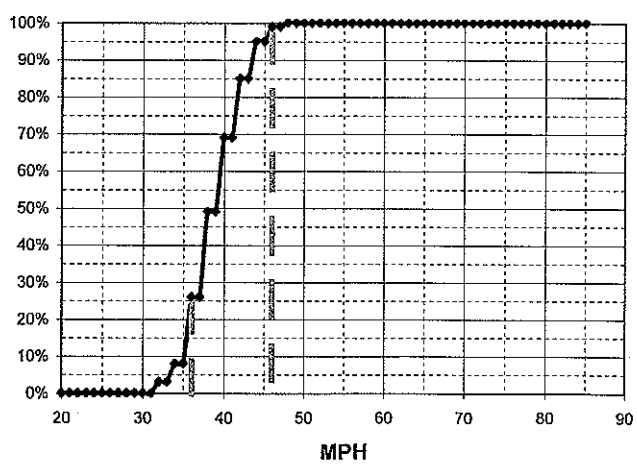
Time: 09:30 - 10:30

Critical Speed :	44	mph
Average Speed :	39.3	mph
Median Speed :	40	mph
Standard Deviation:	3.4	mph
Pace Range :	36 - 46	mph
Percent in Pace :	87.0%	
Total # Vehicles :	100	

Critical Speed :	#DIV/0!	mph
Average Speed :	#DIV/0!	mph
Median Speed :	0	mph
Standard Deviation:	#DIV/0!	mph
Pace Range :	#DIV/0!	mph
Percent in Pace :	#DIV/0!	
Total # Vehicles :	0	

MPH	# of Veh.	Both Directions	%
85			100.0%
84			100.0%
83			100.0%
82			100.0%
81			100.0%
80			100.0%
79			100.0%
78			100.0%
77			100.0%
76			100.0%
75			100.0%
74			100.0%
73			100.0%
72			100.0%
71			100.0%
70			100.0%
69			100.0%
68			100.0%
67			100.0%
66			100.0%
65			100.0%
64			100.0%
63			100.0%
62			100.0%
61			100.0%
60			100.0%
59			100.0%
58			100.0%
57			100.0%
56			100.0%
55			100.0%
54			100.0%
53			100.0%
52			100.0%
51			100.0%
50			100.0%
49	1	◆	100.0%
48			100.0%
47	4	◆◆◆◆	99.0%
46			99.0%
45			95.0%
44	10	◆◆◆◆◆◆◆◆◆◆	95.0%
43			85.0%
42	16	◆◆◆◆◆◆◆◆◆◆◆◆◆◆	85.0%
41			69.0%
40	20	◆◆◆◆◆◆◆◆◆◆◆◆◆◆◆◆	69.0%
39			49.0%
38	23	◆◆◆◆◆◆◆◆◆◆◆◆◆◆◆◆◆◆◆◆	49.0%
37			26.0%
36	18	◆◆◆◆◆◆◆◆◆◆◆◆◆◆◆◆	26.0%
35			8.0%
34	5	◆◆◆◆◆	8.0%
33			3.0%
32	3	◆◆◆	3.0%
31			0.0%
30			0.0%
29			0.0%
28			0.0%
27			0.0%
26			0.0%
25			0.0%
24			0.0%
23			0.0%
22			0.0%
21			0.0%
20			0.0%

MPH	No of Veh.	%
85		#DIV/0!
84		#DIV/0!
83		#DIV/0!
82		#DIV/0!
81		#DIV/0!
80		#DIV/0!
79		#DIV/0!
78		#DIV/0!
77		#DIV/0!
76		#DIV/0!
75		#DIV/0!
74		#DIV/0!
73		#DIV/0!
72		#DIV/0!
71		#DIV/0!
70		#DIV/0!
69		#DIV/0!
68		#DIV/0!
67		#DIV/0!
66		#DIV/0!
65		#DIV/0!
64		#DIV/0!
63		#DIV/0!
62		#DIV/0!
61		#DIV/0!
60		#DIV/0!
59		#DIV/0!
58		#DIV/0!
57		#DIV/0!
56		#DIV/0!
55		#DIV/0!
54		#DIV/0!
53		#DIV/0!
52		#DIV/0!
51		#DIV/0!
50		#DIV/0!
49		#DIV/0!
48		#DIV/0!
47		#DIV/0!
46		#DIV/0!
45		#DIV/0!
44		#DIV/0!
43		#DIV/0!
42		#DIV/0!
41		#DIV/0!
40		#DIV/0!
39		#DIV/0!
38		#DIV/0!
37		#DIV/0!
36		#DIV/0!
35		#DIV/0!
34		#DIV/0!
33		#DIV/0!
32		#DIV/0!
31		#DIV/0!
30		#DIV/0!
29		#DIV/0!
28		#DIV/0!
27		#DIV/0!
26		#DIV/0!
25		#DIV/0!
24		#DIV/0!
23		#DIV/0!
22		#DIV/0!
21		#DIV/0!
20		#DIV/0!





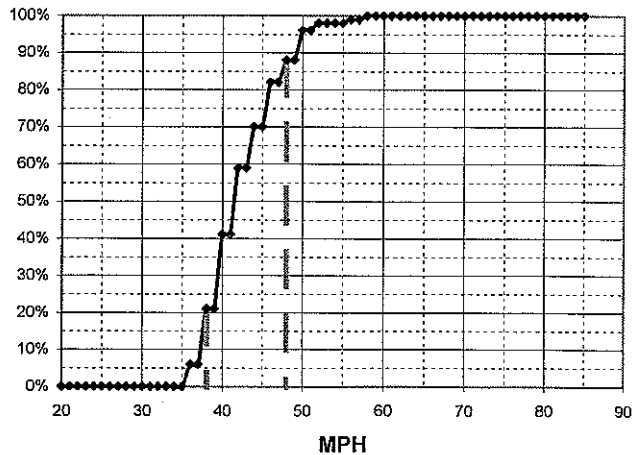
SHASTA VIEW DR N/ PACIFIC AVE

Observer: Lori Lackey

Calcs: Frank Hogue

Critical Speed :	48	mph
Average Speed :	42.8	mph
Median Speed :	42	mph
Standard Deviation:	4.6	mph
Pace Range :	38 - 48	mph
Percent in Pace :	76.0%	
Total # Vehicles :	100	

MPH	# of Veh.	Both Directions	%
85			100.0%
84			100.0%
83			100.0%
82			100.0%
81			100.0%
<b>80</b>			100.0%
79			100.0%
78			100.0%
77			100.0%
76			100.0%
75			100.0%
74			100.0%
73			100.0%
72			100.0%
71			100.0%
<b>70</b>			100.0%
69			100.0%
68			100.0%
67			100.0%
66			100.0%
65			100.0%
64			100.0%
63			100.0%
62			100.0%
61			100.0%
<b>60</b>			100.0%
59			100.0%
58	1	◆	100.0%
57			99.0%
56	1	◆	99.0%
55			98.0%
54			98.0%
53	2	◆◆	98.0%
52			98.0%
51	8	◆◆◆◆◆◆◆◆	96.0%
50			96.0%
49			88.0%
48	6	◆◆◆◆◆◆	88.0%
47			82.0%
46	12	◆◆◆◆◆◆◆◆◆◆	82.0%
45			70.0%
44	11	◆◆◆◆◆◆◆◆◆◆	70.0%
43			59.0%
42	18	◆◆◆◆◆◆◆◆◆◆◆◆◆◆	59.0%
41			41.0%
<b>40</b>	20	◆◆◆◆◆◆◆◆◆◆◆◆◆◆◆◆	41.0%
39			21.0%
38	15	◆◆◆◆◆◆◆◆◆◆◆◆◆◆	21.0%
37			6.0%
36	6	◆◆◆◆◆◆	6.0%
35			0.0%
34			0.0%
33			0.0%
32			0.0%
31			0.0%
<b>30</b>			0.0%
29			0.0%
28			0.0%
27			0.0%
26			0.0%
25			0.0%
24			0.0%
23			0.0%
22			0.0%
21			0.0%
<b>20</b>			0.0%



Posted Speed: 40

Day: FRIDAY

Date: 6/16/06

Weather: Sunny & Dry

Time: 10:50 - 11:32

Critical Speed :	#DIV/0!	mph
Average Speed :	#DIV/0!	mph
Median Speed :	0	mph
Standard Deviation:	#DIV/0!	mph
Pace Range :	#DIV/0!	mph
Percent in Pace :	#DIV/0!	
Total # Vehicles :	0	

MPH	No of Veh.	%
85		#DIV/0!
84		#DIV/0!
83		#DIV/0!
82		#DIV/0!
81		#DIV/0!
<b>80</b>		#DIV/0!
79		#DIV/0!
78		#DIV/0!
77		#DIV/0!
76		#DIV/0!
75		#DIV/0!
74		#DIV/0!
73		#DIV/0!
72		#DIV/0!
71		#DIV/0!
<b>70</b>		#DIV/0!
69		#DIV/0!
68		#DIV/0!
67		#DIV/0!
66		#DIV/0!
65		#DIV/0!
64		#DIV/0!
63		#DIV/0!
62		#DIV/0!
61		#DIV/0!
<b>60</b>		#DIV/0!
59		#DIV/0!
58		#DIV/0!
57		#DIV/0!
56		#DIV/0!
55		#DIV/0!
54		#DIV/0!
53		#DIV/0!
52		#DIV/0!
51		#DIV/0!
<b>50</b>		#DIV/0!
49		#DIV/0!
48		#DIV/0!
47		#DIV/0!
46		#DIV/0!
45		#DIV/0!
44		#DIV/0!
43		#DIV/0!
42		#DIV/0!
41		#DIV/0!
<b>40</b>		#DIV/0!
39		#DIV/0!
38		#DIV/0!
37		#DIV/0!
36		#DIV/0!
35		#DIV/0!
34		#DIV/0!
33		#DIV/0!
32		#DIV/0!
31		#DIV/0!
<b>30</b>		#DIV/0!
29		#DIV/0!
28		#DIV/0!
27		#DIV/0!
26		#DIV/0!
25		#DIV/0!
24		#DIV/0!
23		#DIV/0!
22		#DIV/0!
21		#DIV/0!
<b>20</b>		#DIV/0!

