



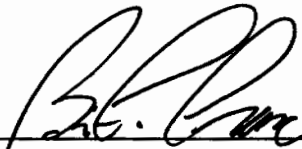
**CITY OF REDDING  
ENGINEERING AND TRAFFIC SURVEY  
OF  
VICTOR AVENUE**

**FEBRUARY 28, 2007**

**For the determination of safe and reasonable speed zoning as required by Sections 22358 and 40802 of the California Vehicle Code (CVC), as defined by Section 627 of the CVC and in accordance with Section 2B. 13 of the California Manual on Uniform Traffic Control Devices, this Engineering and Traffic Survey (ETS) was initiated to verify or modify speed zones on Victor Avenue.**

**Based on the results of this ETS (attached) and adoption of Ordinance Number 2465 by the City Council of the City of Redding, amending Redding Municipal Code Section 11.12.010, a speed zone on Victor Avenue of 35 MPH from Old Alturas Road to Hartnell Avenue is established, and a speed zone of 40 MPH from Hartnell Avenue to Churn Creek Road is established.**

**In accordance with Redding Municipal Code 11.08.010, appropriate signs giving notice of the above speed zoning shall be placed and the stated speed limit(s) shall be effective upon the placement of such signs.**

  
3/26/2012  
**Brian Crane, P. E.**  
**Director of Public Works**

**ATTEST:**

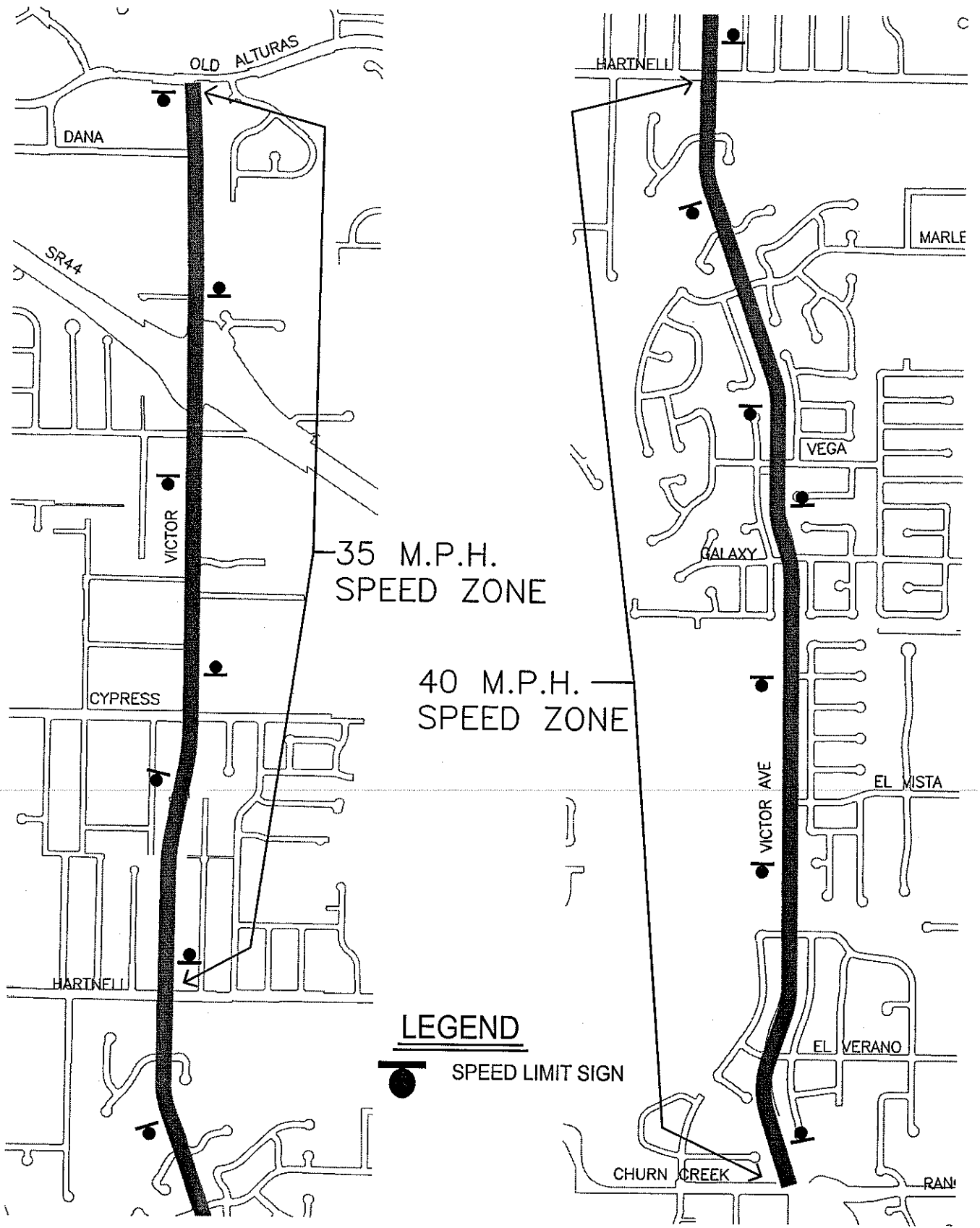
  
3/26/12  
**PAMELA MIZE, City Clerk**

**VICTOR AVE  
FEBRUARY 2007  
CONDITION SUMMARY**

SR 273 LOCATION TO	OLD ALTURAS  HARTNELL	HARTNELL  CHURN CREEK	
NO. OF LANES	2	4	
WIDTH, FT. ROADWAY	VARIES	VARIES	
LENGTH, FT.	5000	2.01 MI.	
HORIZONTAL ALIGNMENT	CURVES	SOME CURVES	
VERTICAL	ROLLING	ROLLING	
DISTRICT	BUSINESS	BUSINESS	
ADT	16,122	9,538	
PEDESTRIANS	FEW	FEW	
SIDEWALKS	15%	65%	
BIKE LANE/ROUTE	BIKE ROUTE	BIKE ROUTE	
DRIVEWAYS	NUMEROUS	SOME	
SPEED RELATED COLLISIONS	36 IN 2 YRS SIGNIFICANT	9 IN 2 YRS SIGNIFICANT	
EXISTING SPEED ZONING, MPH	40	40	
10 MPH PACE RANGE	37 - 47	38 - 48	
85TH% SPEED	44	46	
<b>SURVEY CONCLUSION</b>			
REASONABLE SPEED, MPH	*35	**40	
<b>ACTION</b>			
PUBLIC WORKS APPROVED	RMC 11.08.010	RMC 11.08.010	
SPEED POSTED	35 10/18/07	40 3/18/83	

ADDITIONAL  
COMMENTS:

\*Due to bicyclists (bike route) and conditions not readily apparent by drivers as evidenced by the significant speed-related collision history. \*A reduction in speed to match existing conditions with the traffic safety needs of the area



CITY OF REDDING TRANSPORTATION & ENGINEERING DIVISION FEBRUARY 2007



# VICTOR AVE SPEED ZONES

OLD ALTURAS RD TO CHURN CREEK RD



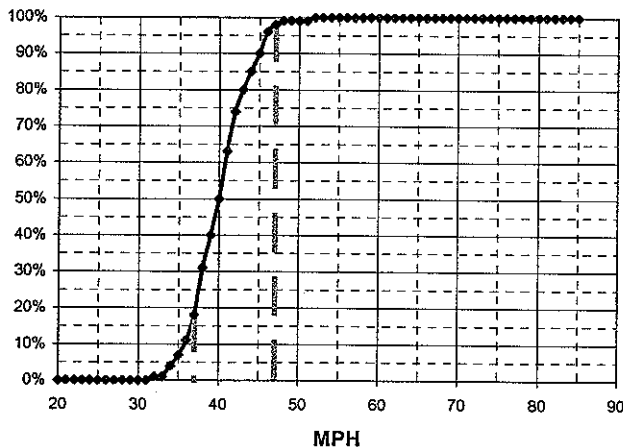
VICTOR AVE S/ DANA DR

Observer: Frank Hogue

Calcs: Frank Hogue

Critical Speed :	45	mph
Average Speed :	40.6	mph
Median Speed :	0	mph
Standard Deviation:	3.5	mph
Pace Range :	37 - 47	mph
Percent in Pace :	85.0%	
Total # Vehicles :	100	

MPH	# of Veh.	Both Directions	%
85			100.0%
84			100.0%
83			100.0%
82			100.0%
81			100.0%
80			100.0%
79			100.0%
78			100.0%
77			100.0%
76			100.0%
75			100.0%
74			100.0%
73			100.0%
72			100.0%
71			100.0%
70			100.0%
69			100.0%
68			100.0%
67			100.0%
66			100.0%
65			100.0%
64			100.0%
63			100.0%
62			100.0%
61			100.0%
60			100.0%
59			100.0%
58			100.0%
57			100.0%
56			100.0%
55			100.0%
54			100.0%
53			100.0%
52	1	◆	100.0%
51			99.0%
50			99.0%
49			99.0%
48	1	◆	99.0%
47	2	◆◆	98.0%
46	6	◆◆◆◆◆	96.0%
45	5	◆◆◆◆◆	90.0%
44	5	◆◆◆◆◆	85.0%
43	6	◆◆◆◆◆◆	80.0%
42	11	◆◆◆◆◆◆◆◆	74.0%
41	13	◆◆◆◆◆◆◆◆◆◆	63.0%
40	10	◆◆◆◆◆◆◆◆◆	50.0%
39	9	◆◆◆◆◆◆◆◆	40.0%
38	13	◆◆◆◆◆◆◆◆◆◆	31.0%
37	7	◆◆◆◆◆◆◆	18.0%
36	4	◆◆◆◆	11.0%
35	3	◆◆◆	7.0%
34	3	◆◆◆	4.0%
33			1.0%
32	1	◆	1.0%
31			0.0%
30			0.0%
29			0.0%
28			0.0%
27			0.0%
26			0.0%
25			0.0%
24			0.0%
23			0.0%
22			0.0%
21			0.0%
20			0.0%

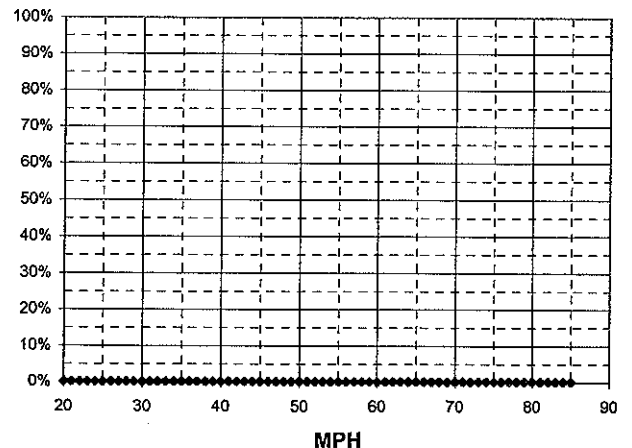


Day: WEDNESDAY  
Date: 3/21/07  
Time: 10:20 - 10:36

Posted Speed: 40  
Weather: Sunny & Dry

Critical Speed :	#DIV/0!	mph
Average Speed :	#DIV/0!	mph
Median Speed :	0	mph
Standard Deviation:	#DIV/0!	mph
Pace Range :	#DIV/0!	mph
Percent in Pace :	#DIV/0!	
Total # Vehicles :	0	

MPH	No of Veh.	%
85		#DIV/0!
84		#DIV/0!
83		#DIV/0!
82		#DIV/0!
81		#DIV/0!
80		#DIV/0!
79		#DIV/0!
78		#DIV/0!
77		#DIV/0!
76		#DIV/0!
75		#DIV/0!
74		#DIV/0!
73		#DIV/0!
72		#DIV/0!
71		#DIV/0!
70		#DIV/0!
69		#DIV/0!
68		#DIV/0!
67		#DIV/0!
66		#DIV/0!
65		#DIV/0!
64		#DIV/0!
63		#DIV/0!
62		#DIV/0!
61		#DIV/0!
60		#DIV/0!
59		#DIV/0!
58		#DIV/0!
57		#DIV/0!
56		#DIV/0!
55		#DIV/0!
54		#DIV/0!
53		#DIV/0!
52		#DIV/0!
51		#DIV/0!
50		#DIV/0!
49		#DIV/0!
48		#DIV/0!
47		#DIV/0!
46		#DIV/0!
45		#DIV/0!
44		#DIV/0!
43		#DIV/0!
42		#DIV/0!
41		#DIV/0!
40		#DIV/0!
39		#DIV/0!
38		#DIV/0!
37		#DIV/0!
36		#DIV/0!
35		#DIV/0!
34		#DIV/0!
33		#DIV/0!
32		#DIV/0!
31		#DIV/0!
30		#DIV/0!
29		#DIV/0!
28		#DIV/0!
27		#DIV/0!
26		#DIV/0!
25		#DIV/0!
24		#DIV/0!
23		#DIV/0!
22		#DIV/0!
21		#DIV/0!
20		#DIV/0!



VICTOR AVE N/ CYPRESS AVE

Observer: Lori Lackey

Calcs: Frank Hogue

Critical Speed :	44	mph
Average Speed :	41.4	mph
Median Speed :	0	mph
Standard Deviation:	3.3	mph
Pace Range :	38 - 48	mph
Percent in Pace :	86.0%	
Total # Vehicles :	100	

Posted Speed: 40  
Weather: Sunny & Dry

Day: Tuesday  
Date: 6/13/06  
Time: 10:30 - 10:55

Critical Speed :	#DIV/0!	mph
Average Speed :	#DIV/0!	mph
Median Speed :	0	mph
Standard Deviation:	#DIV/0!	mph
Pace Range :	#DIV/0!	mph
Percent in Pace :	#DIV/0!	
Total # Vehicles :	0	

MPH	# of Veh.	Both Directions	%
85			100.0%
84			100.0%
83			100.0%
82			100.0%
81			100.0%
80			100.0%
79			100.0%
78			100.0%
77			100.0%
76			100.0%
75			100.0%
74			100.0%
73			100.0%
72			100.0%
71			100.0%
70			100.0%
69			100.0%
68			100.0%
67			100.0%
66			100.0%
65			100.0%
64			100.0%
63			100.0%
62			100.0%
61			100.0%
60			100.0%
59			100.0%
58			100.0%
57			100.0%
56			100.0%
55			100.0%
54			100.0%
53			100.0%
52			100.0%
51			100.0%
50	1	◆	100.0%
49			99.0%
48	6	◆◆◆◆◆◆	99.0%
47			93.0%
46	7	◆◆◆◆◆◆◆	93.0%
45			86.0%
44	17	◆◆◆◆◆◆◆◆◆◆◆◆◆◆◆◆	86.0%
43			69.0%
42	19	◆◆◆◆◆◆◆◆◆◆◆◆◆◆◆◆	69.0%
41			50.0%
40	23	◆◆◆◆◆◆◆◆◆◆◆◆◆◆◆◆	50.0%
39			27.0%
38	20	◆◆◆◆◆◆◆◆◆◆◆◆◆◆◆◆	27.0%
37			7.0%
36	7	◆◆◆◆◆◆◆	7.0%
35			0.0%
34			0.0%
33			0.0%
32			0.0%
31			0.0%
30			0.0%
29			0.0%
28			0.0%
27			0.0%
26			0.0%
25			0.0%
24			0.0%
23			0.0%
22			0.0%
21			0.0%
20			0.0%

MPH	No of Veh.	%
85		#DIV/0!
84		#DIV/0!
83		#DIV/0!
82		#DIV/0!
81		#DIV/0!
80		#DIV/0!
79		#DIV/0!
78		#DIV/0!
77		#DIV/0!
76		#DIV/0!
75		#DIV/0!
74		#DIV/0!
73		#DIV/0!
72		#DIV/0!
71		#DIV/0!
70		#DIV/0!
69		#DIV/0!
68		#DIV/0!
67		#DIV/0!
66		#DIV/0!
65		#DIV/0!
64		#DIV/0!
63		#DIV/0!
62		#DIV/0!
61		#DIV/0!
60		#DIV/0!
59		#DIV/0!
58		#DIV/0!
57		#DIV/0!
56		#DIV/0!
55		#DIV/0!
54		#DIV/0!
53		#DIV/0!
52		#DIV/0!
51		#DIV/0!
50		#DIV/0!
49		#DIV/0!
48		#DIV/0!
47		#DIV/0!
46		#DIV/0!
45		#DIV/0!
44		#DIV/0!
43		#DIV/0!
42		#DIV/0!
41		#DIV/0!
40		#DIV/0!
39		#DIV/0!
38		#DIV/0!
37		#DIV/0!
36		#DIV/0!
35		#DIV/0!
34		#DIV/0!
33		#DIV/0!
32		#DIV/0!
31		#DIV/0!
30		#DIV/0!
29		#DIV/0!
28		#DIV/0!
27		#DIV/0!
26		#DIV/0!
25		#DIV/0!
24		#DIV/0!
23		#DIV/0!
22		#DIV/0!
21		#DIV/0!
20		#DIV/0!

