




**CITY OF REDDING
ENGINEERING AND TRAFFIC SURVEY
OF
BUENAVENTURA BOULEVARD**

FEBRUARY 28, 2007

For the determination of safe and reasonable speed zoning as required by Sections 22358 and 40802 of the California Vehicle Code (CVC), as defined by Section 627 of the CVC and in accordance with Section 2B. 13 of the California Manual on Uniform Traffic Control Devices, this Engineering and Traffic Survey (ETS) was initiated to verify or modify speed zones on Buenaventura Boulevard.

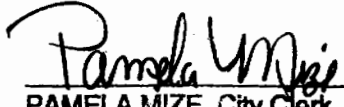
Based on the results of this ETS (attached) and adoption of Ordinance Number 2465 by the City Council of the City of Redding, amending Redding Municipal Code Section 11.12.010, a speed zone on Buenaventura Boulevard of 45 MPH from Eureka Way to Westside Road is established.

In accordance with Redding Municipal Code 11.08.010, appropriate signs giving notice of the above speed zoning shall be placed and the stated speed limit(s) shall be effective upon the placement of such signs.


3/26/2012

Brian Crane, P. E.
Director of Public Works

ATTEST:


3/26/12

PAMELA MIZE, City Clerk

**BUENAVENTURA BLVD
FEBRUARY 2007
CONDITION SUMMARY**

FROM LOCATION TO	EUREKA PLACER	PLACER STARLIGHT	STARLIGHT CANYON CREEK
NO. OF LANES	3	2	2
WIDTH, FT. ROADWAY	VARIES	VARIES	VARIES
LENGTH, FT.	4200	3333	4665
HORIZONTAL ALIGNMENT	STRAIGHT	CURVES	CURVES
VERTICAL	SLOPING	FLAT	SLOPING
DISTRICT	RESIDENTIAL	RUAL/BUSINESS	RUAL / RES.
ADT	10,100	8,179	8,858
PEDESTRIANS	FEW	FEW	FEW
SIDEWALKS	10%	5%	NONE
BIKE LANE/ROUTE	BIKE ROUTE	BIKE ROUTE	BIKE ROUTE
DRIVEWAYS	FEW	FEW	FEW
SPEED RELATED ACCIDENTS	5 IN 2 YRS NOT SIGNIFICANT	NONE	2 IN 2 YRS NOT SIGNIFICANT
EXISTING SPEED ZONING	45	45	45
10 MPH PACE RANGE	42 - 52	44 - 54	44 - 54
85TH% SPEED	52	54	54

SURVEY CONCLUSION

REASONABLE SPEED, MPH	*45	*45	*45
--------------------------	-----	-----	-----

ACTION

PUBLIC WORKS APPROVED	RMC 11.08.010	RMC 11.08.010	RMC 11.08.010
SPEED POSTED	45 4/19/96	45 4/19/96	45 4/19/96

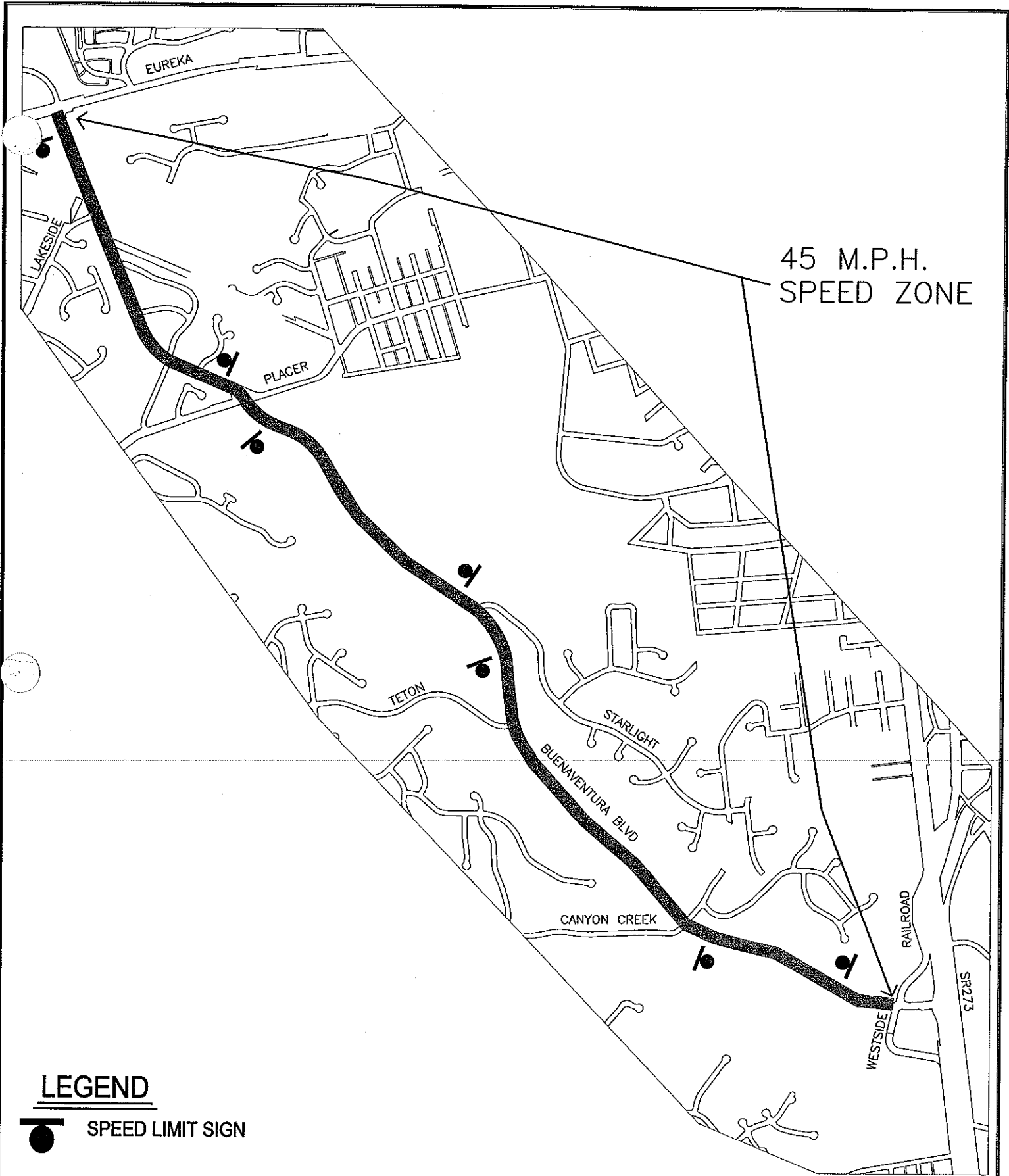
**ADDITIONAL
COMMENTS**

* Designated truck route with heavy truck traffic and narrow shoulders with bicyclists

**BUENAVENTURA BLVD
FEBRUARY 2007
CONDITION SUMMARY**

FROM LOCATION TO	CANYON CREEK WESTSIDE		
NO. OF LANES	2		
WIDTH, FT. ROADWAY	VARIES		
LENGTH, FT.	3814		
HORIZONTAL ALIGNMENT	CURVES		
VERTICAL	FLAT		
DISTRICT	RUAL / RES.		
ADT	11,413		
PEDESTRIANS	FEW		
SIDEWALKS	30%		
BIKE LANE/ROUTE	BIKE ROUTE		
DRIVEWAYS	FEW		
SPEED RELATED ACCIDENTS	1 IN 2 YRS NOT SIGNIFICANT		
EXISTING SPEED ZONING	45		
10 MPH PACE RANGE	42 - 52		
85TH% SPEED	50		
SURVEY CONCLUSION			
REASONABLE SPEED, MPH	45		
ACTION			
PUBLIC WORKS APPROVED	RMC 11.08.010		
SPEED POSTED	45 4/19/96		

ADDITIONAL
CONDITIONS



45 M.P.H.
SPEED ZONE

LEGEND

 SPEED LIMIT SIGN

CITY OF REDDING TRANSPORTATION & ENGINEERING DIVISION

FEBRUARY 2007



BUENAVENTURA BLVD SPEED ZONE
PLACER ST TO SR273



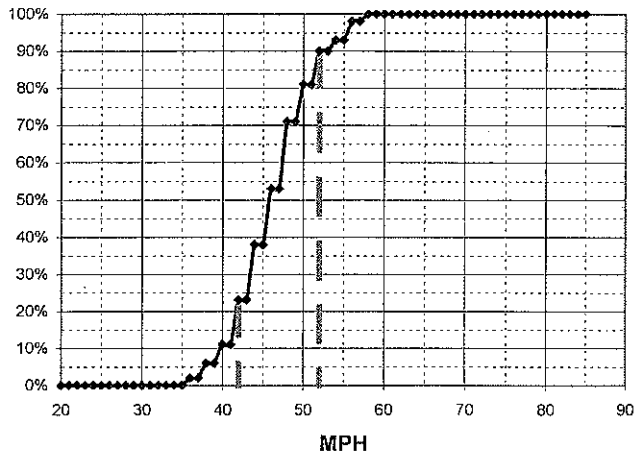
BUENAVENTURA S/ EUREKA WAY

Observer: Lori Lackey

Calcs: Frank Hogue

Critical Speed :	52	mph
Average Speed :	46.7	mph
Median Speed :	46	mph
Standard Deviation:	4.9	mph
Pace Range :	42 - 52	mph
Percent in Pace :	70.0%	
Total # Vehicles :	100	

MPH	# of Veh.	Both Directions	%
85			100.0%
84			100.0%
83			100.0%
82			100.0%
81			100.0%
80			100.0%
79			100.0%
78			100.0%
77			100.0%
76			100.0%
75			100.0%
74			100.0%
73			100.0%
72			100.0%
71			100.0%
70			100.0%
69			100.0%
68			100.0%
67			100.0%
66			100.0%
65			100.0%
64			100.0%
63			100.0%
62			100.0%
61			100.0%
60			100.0%
59	2	◆◆	100.0%
58			100.0%
57	5	◆◆◆◆◆	98.0%
56			98.0%
55			93.0%
54	3	◆◆◆	93.0%
53			90.0%
52	9	◆◆◆◆◆◆◆◆◆	90.0%
51			81.0%
50	10	◆◆◆◆◆◆◆◆◆◆	81.0%
49			71.0%
48	18	◆◆◆◆◆◆◆◆◆◆◆◆◆◆◆◆	71.0%
47			53.0%
46	15	◆◆◆◆◆◆◆◆◆◆◆◆◆◆◆	53.0%
45			38.0%
44	15	◆◆◆◆◆◆◆◆◆◆◆◆◆◆◆	38.0%
43			23.0%
42	12	◆◆◆◆◆◆◆◆◆◆◆◆◆◆	23.0%
41			11.0%
40	5	◆◆◆◆◆	11.0%
39			6.0%
38	4	◆◆◆◆	6.0%
37			2.0%
36	2	◆◆	2.0%
35			0.0%
34			0.0%
33			0.0%
32			0.0%
31			0.0%
30			0.0%
29			0.0%
28			0.0%
27			0.0%
26			0.0%
25			0.0%
24			0.0%
23			0.0%
22			0.0%
21			0.0%
20			0.0%



Day: Thursday

Date: 6/22/06

Time: 10:15 - 11:05

Posted Speed: 45

Weather: Sunny & Dry

Critical Speed :	#DIV/0!	mph
Average Speed :	#DIV/0!	mph
Median Speed :	0	mph
Standard Deviation:	#DIV/0!	mph
Pace Range :	#DIV/0!	mph
Percent in Pace :	#DIV/0!	
Total # Vehicles :	0	

MPH	No of Veh.		%
85			#DIV/0!
84			#DIV/0!
83			#DIV/0!
82			#DIV/0!
81			#DIV/0!
80			#DIV/0!
79			#DIV/0!
78			#DIV/0!
77			#DIV/0!
76			#DIV/0!
75			#DIV/0!
74			#DIV/0!
73			#DIV/0!
72			#DIV/0!
71			#DIV/0!
70			#DIV/0!
69			#DIV/0!
68			#DIV/0!
67			#DIV/0!
66			#DIV/0!
65			#DIV/0!
64			#DIV/0!
63			#DIV/0!
62			#DIV/0!
61			#DIV/0!
60			#DIV/0!
59			#DIV/0!
58			#DIV/0!
57			#DIV/0!
56			#DIV/0!
55			#DIV/0!
54			#DIV/0!
53			#DIV/0!
52			#DIV/0!
51			#DIV/0!
50			#DIV/0!
49			#DIV/0!
48			#DIV/0!
47			#DIV/0!
46			#DIV/0!
45			#DIV/0!
44			#DIV/0!
43			#DIV/0!
42			#DIV/0!
41			#DIV/0!
40			#DIV/0!
39			#DIV/0!
38			#DIV/0!
37			#DIV/0!
36			#DIV/0!
35			#DIV/0!
34			#DIV/0!
33			#DIV/0!
32			#DIV/0!
31			#DIV/0!
30			#DIV/0!
29			#DIV/0!
28			#DIV/0!
27			#DIV/0!
26			#DIV/0!
25			#DIV/0!
24			#DIV/0!
23			#DIV/0!
22			#DIV/0!
21			#DIV/0!
20			#DIV/0!

