



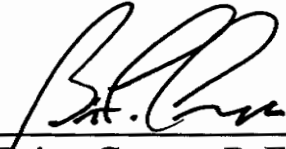
**CITY OF REDDING  
ENGINEERING AND TRAFFIC SURVEY  
OF  
CLEAR CREEK ROAD**

**FEBRUARY 28, 2007**

**For the determination of safe and reasonable speed zoning as required by Sections 22358 and 40802 of the California Vehicle Code (CVC), as defined by Section 627 of the CVC and in accordance with Section 2B. 13 of the California Manual on Uniform Traffic Control Devices, this Engineering and Traffic Survey (ETS) was initiated to verify or modify speed zones on Clear Creek Road.**

**Based on the results of this ETS (attached) and adoption of Ordinance Number 2465 by the City Council of the City of Redding, amending Redding Municipal Code Section 11.12.010, a speed zone on Clear Creek Road of 45 MPH from State Route 273 to 800 feet west is established and a speed zone of 50 MPH from 4000 feet west of State Route 273 to the City Limits is established.**

**In accordance with Redding Municipal Code 11.08.010, appropriate signs giving notice of the above speed zoning shall be placed and the stated speed limit(s) shall be effective upon the placement of such signs.**

  
\_\_\_\_\_  
**Brian Crane, P. E.**  
**Director of Public Works**

**ATTEST:**

  
\_\_\_\_\_  
**PAMELA MIZE, City Clerk**

**CLEAR CREEK RD  
FEBRUARY 2007  
CONDITION SUMMARY**

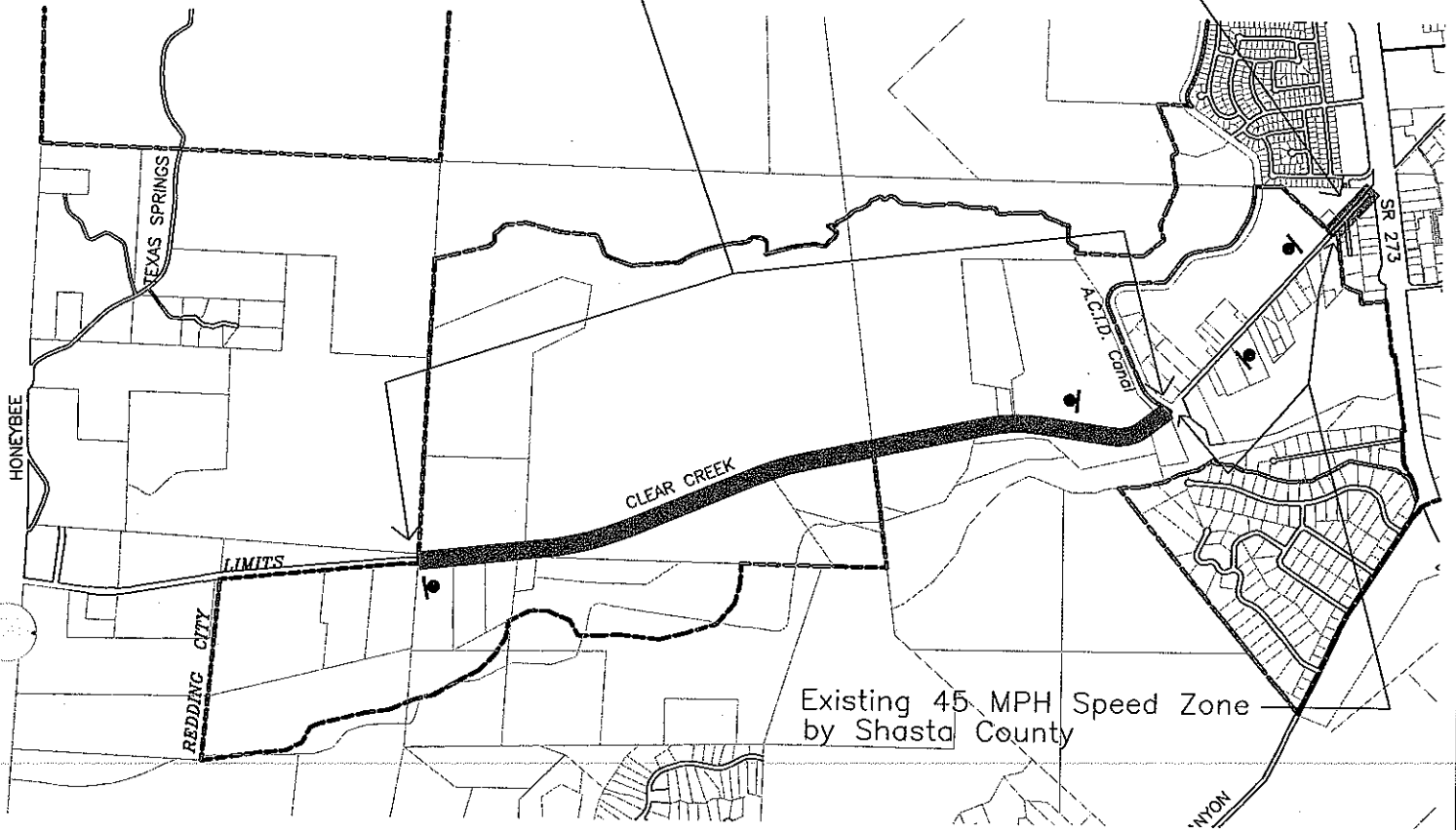
|                               |                                    |                                   |  |
|-------------------------------|------------------------------------|-----------------------------------|--|
| FROM<br>LOCATION<br>TO        | SR 273<br><br>800' WEST            | A.C.I.D. CANAL<br><br>CITY LIMITS |  |
| NO. OF LANES                  | 2                                  | 2                                 |  |
| WIDTH, FT.                    | 28                                 | 28                                |  |
| ROADWAY<br>LENGTH, FT.        | 800                                | 3.5 MI.                           |  |
| HORIZONTAL<br>ALIGNMENT       | STRAIGHT                           | CURVES                            |  |
| VERTICAL                      | FLAT                               | FLAT                              |  |
| DISTRICT                      | BUS / IND                          | BUS / IND                         |  |
| ADT                           | 2,600                              | 3,593                             |  |
| PEDESTRIANS                   | FEW                                | FEW                               |  |
| SIDEWALKS                     | NONE                               | NONE                              |  |
| BIKE LANE/ROUTE               | BIKE ROUTE                         | BIKE ROUTE                        |  |
| DRIVEWAYS                     | FEW                                | FEW                               |  |
| SPEED RELATED<br>COLLISIONS   | NONE                               | NONE                              |  |
| EXISTING SPEED<br>ZONING, MPH | 25                                 | 50                                |  |
| 10 MPH PACE RANGE             | 42 - 52                            | 48 - 58                           |  |
| 85TH% SPEED                   | 52                                 | 58                                |  |
| <b>SURVEY CONCLUSION</b>      |                                    |                                   |  |
| REASONABLE<br>SPEED, MPH      | *45                                | *50                               |  |
| <b>ACTION</b>                 |                                    |                                   |  |
| PUBLIC WORKS<br>APPROVED      | RMC 11.08.010                      | RMC 11.08.010                     |  |
| SPEED<br>POSTED               | UTILIZE EXISTING<br>COUNTY POSTING | 50<br>7/8/96                      |  |

ADDITIONAL  
COMMENTS:

\* Heavy truck traffic and narrow shoulders with bicyclists

50 M.P.H.  
SPEED ZONE

45 M.P.H.  
SPEED ZONE



Existing 45 MPH Speed Zone  
by Shasta County

**LEGEND**

 SPEED LIMIT SIGN

CITY OF REDDING TRANSPORTATION & ENGINEERING DIVISION FEBRUARY 2007

**CLEAR CREEK RD SPEED ZONES**  
SR 273 TO MOST WESTERLY CITY LIMITS



**CLEAR CREEK RD W/ SR 273**

Observer: Lori Lackey

Calcs: Frank Hogue

Posted Speed: 45  
Weather: Sunny & Dry

Day: Wednesday  
Date: 6/21/06  
Time: 08:30 - 09:10

|                     |         |     |
|---------------------|---------|-----|
| Critical Speed :    | 52      | mph |
| Average Speed :     | 46.3    | mph |
| Median Speed :      | 46      | mph |
| Standard Deviation: | 4.4     | mph |
| Pace Range :        | 42 - 52 | mph |
| Percent in Pace :   | 75.0%   |     |
| Total # Vehicles :  | 100     |     |

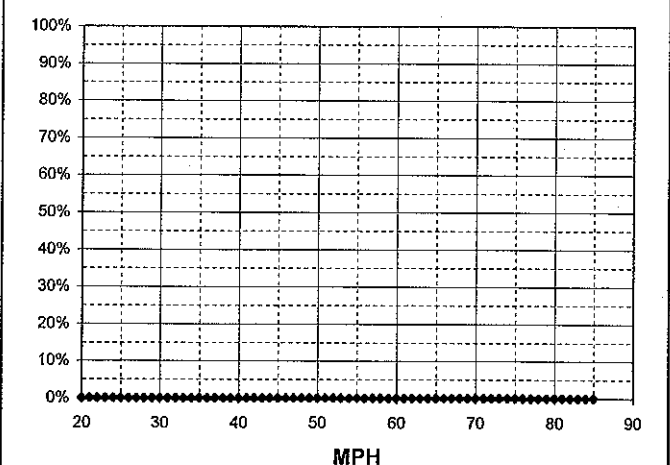
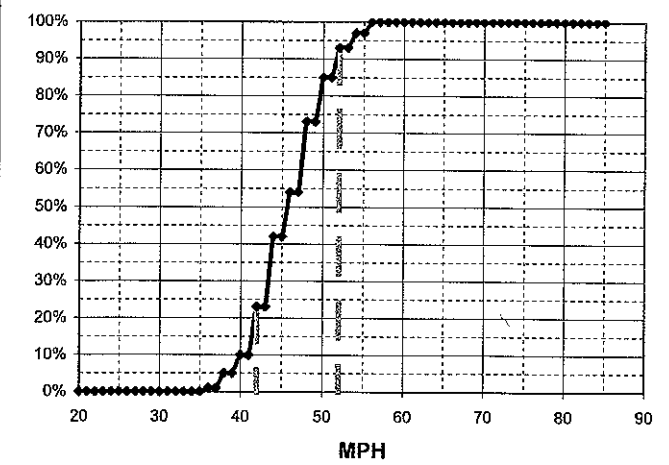
  

| MPH | # of Veh. | Both Directions | %      |
|-----|-----------|-----------------|--------|
| 85  |           |                 | 100.0% |
| 84  |           |                 | 100.0% |
| 83  |           |                 | 100.0% |
| 82  |           |                 | 100.0% |
| 81  |           |                 | 100.0% |
| 80  |           |                 | 100.0% |
| 79  |           |                 | 100.0% |
| 78  |           |                 | 100.0% |
| 77  |           |                 | 100.0% |
| 76  |           |                 | 100.0% |
| 75  |           |                 | 100.0% |
| 74  |           |                 | 100.0% |
| 73  |           |                 | 100.0% |
| 72  |           |                 | 100.0% |
| 71  |           |                 | 100.0% |
| 70  |           |                 | 100.0% |
| 69  |           |                 | 100.0% |
| 68  |           |                 | 100.0% |
| 67  |           |                 | 100.0% |
| 66  |           |                 | 100.0% |
| 65  |           |                 | 100.0% |
| 64  |           |                 | 100.0% |
| 63  |           |                 | 100.0% |
| 62  |           |                 | 100.0% |
| 61  |           |                 | 100.0% |
| 60  |           |                 | 100.0% |
| 59  |           |                 | 100.0% |
| 58  |           |                 | 100.0% |
| 57  |           |                 | 100.0% |
| 56  | 3         | ◆◆◆             | 100.0% |
| 55  |           |                 | 97.0%  |
| 54  | 4         | ◆◆◆◆            | 97.0%  |
| 53  |           |                 | 93.0%  |
| 52  | 8         | ◆◆◆◆◆◆◆◆        | 93.0%  |
| 51  |           |                 | 85.0%  |
| 50  | 12        | ◆◆◆◆◆◆◆◆◆◆      | 85.0%  |
| 49  |           |                 | 73.0%  |
| 48  | 19        | ◆◆◆◆◆◆◆◆◆◆◆◆◆◆  | 73.0%  |
| 47  |           |                 | 54.0%  |
| 46  | 12        | ◆◆◆◆◆◆◆◆◆◆      | 54.0%  |
| 45  |           |                 | 42.0%  |
| 44  | 19        | ◆◆◆◆◆◆◆◆◆◆◆◆◆◆  | 42.0%  |
| 43  |           |                 | 23.0%  |
| 42  | 13        | ◆◆◆◆◆◆◆◆◆◆◆◆    | 23.0%  |
| 41  |           |                 | 10.0%  |
| 40  | 5         | ◆◆◆◆◆           | 10.0%  |
| 39  |           |                 | 5.0%   |
| 38  | 4         | ◆◆◆◆            | 5.0%   |
| 37  |           |                 | 1.0%   |
| 36  | 1         | ◆               | 1.0%   |
| 35  |           |                 | 0.0%   |
| 34  |           |                 | 0.0%   |
| 33  |           |                 | 0.0%   |
| 32  |           |                 | 0.0%   |
| 31  |           |                 | 0.0%   |
| 30  |           |                 | 0.0%   |
| 29  |           |                 | 0.0%   |
| 28  |           |                 | 0.0%   |
| 27  |           |                 | 0.0%   |
| 26  |           |                 | 0.0%   |
| 25  |           |                 | 0.0%   |
| 24  |           |                 | 0.0%   |
| 23  |           |                 | 0.0%   |
| 22  |           |                 | 0.0%   |
| 21  |           |                 | 0.0%   |
| 20  |           |                 | 0.0%   |

|                     |         |     |
|---------------------|---------|-----|
| Critical Speed :    | #DIV/0! | mph |
| Average Speed :     | #DIV/0! | mph |
| Median Speed :      | 0       | mph |
| Standard Deviation: | #DIV/0! | mph |
| Pace Range :        | #DIV/0! | mph |
| Percent in Pace :   | #DIV/0! |     |
| Total # Vehicles :  | 0       |     |

| MPH | No of Veh. | %       |
|-----|------------|---------|
| 85  |            | #DIV/0! |
| 84  |            | #DIV/0! |
| 83  |            | #DIV/0! |
| 82  |            | #DIV/0! |
| 81  |            | #DIV/0! |
| 80  |            | #DIV/0! |
| 79  |            | #DIV/0! |
| 78  |            | #DIV/0! |
| 77  |            | #DIV/0! |
| 76  |            | #DIV/0! |
| 75  |            | #DIV/0! |
| 74  |            | #DIV/0! |
| 73  |            | #DIV/0! |
| 72  |            | #DIV/0! |
| 71  |            | #DIV/0! |
| 70  |            | #DIV/0! |
| 69  |            | #DIV/0! |
| 68  |            | #DIV/0! |
| 67  |            | #DIV/0! |
| 66  |            | #DIV/0! |
| 65  |            | #DIV/0! |
| 64  |            | #DIV/0! |
| 63  |            | #DIV/0! |
| 62  |            | #DIV/0! |
| 61  |            | #DIV/0! |
| 60  |            | #DIV/0! |
| 59  |            | #DIV/0! |
| 58  |            | #DIV/0! |
| 57  |            | #DIV/0! |
| 56  |            | #DIV/0! |
| 55  |            | #DIV/0! |
| 54  |            | #DIV/0! |
| 53  |            | #DIV/0! |
| 52  |            | #DIV/0! |
| 51  |            | #DIV/0! |
| 50  |            | #DIV/0! |
| 49  |            | #DIV/0! |
| 48  |            | #DIV/0! |
| 47  |            | #DIV/0! |
| 46  |            | #DIV/0! |
| 45  |            | #DIV/0! |
| 44  |            | #DIV/0! |
| 43  |            | #DIV/0! |
| 42  |            | #DIV/0! |
| 41  |            | #DIV/0! |
| 40  |            | #DIV/0! |
| 39  |            | #DIV/0! |
| 38  |            | #DIV/0! |
| 37  |            | #DIV/0! |
| 36  |            | #DIV/0! |
| 35  |            | #DIV/0! |
| 34  |            | #DIV/0! |
| 33  |            | #DIV/0! |
| 32  |            | #DIV/0! |
| 31  |            | #DIV/0! |
| 30  |            | #DIV/0! |
| 29  |            | #DIV/0! |
| 28  |            | #DIV/0! |
| 27  |            | #DIV/0! |
| 26  |            | #DIV/0! |
| 25  |            | #DIV/0! |
| 24  |            | #DIV/0! |
| 23  |            | #DIV/0! |
| 22  |            | #DIV/0! |
| 21  |            | #DIV/0! |
| 20  |            | #DIV/0! |



CLEAR CREEK RD W/ ACID CANAL

Observer: Lori Lackey

Calcs: Frank Hogue

Posted Speed: 50

Day: Wednesday

Date: 6/21/06

Weather: Sunny & Dry

Time: 09:30 - 10:10

|                     |         |     |
|---------------------|---------|-----|
| Critical Speed :    | 58      | mph |
| Average Speed :     | 52.7    | mph |
| Median Speed :      | 52      | mph |
| Standard Deviation: | 5.3     | mph |
| Pace Range :        | 48 - 58 | mph |
| Percent in Pace :   | 67.0%   |     |
| Total # Vehicles :  | 100     |     |

|                     |         |     |
|---------------------|---------|-----|
| Critical Speed :    | #DIV/0! | mph |
| Average Speed :     | #DIV/0! | mph |
| Median Speed :      | 0       | mph |
| Standard Deviation: | #DIV/0! | mph |
| Pace Range :        | #DIV/0! | mph |
| Percent in Pace :   | #DIV/0! |     |
| Total # Vehicles :  | 0       |     |

| MPH | # of Veh. | Both Directions  | %      |
|-----|-----------|------------------|--------|
| 85  |           |                  | 100.0% |
| 84  |           |                  | 100.0% |
| 83  |           |                  | 100.0% |
| 82  |           |                  | 100.0% |
| 81  |           |                  | 100.0% |
| 80  |           |                  | 100.0% |
| 79  |           |                  | 100.0% |
| 78  |           |                  | 100.0% |
| 77  |           |                  | 100.0% |
| 76  |           |                  | 100.0% |
| 75  |           |                  | 100.0% |
| 74  |           |                  | 100.0% |
| 73  |           |                  | 100.0% |
| 72  |           |                  | 100.0% |
| 71  |           |                  | 100.0% |
| 70  | 1         | ◆                | 100.0% |
| 69  |           |                  | 99.0%  |
| 68  |           |                  | 99.0%  |
| 67  | 1         | ◆                | 99.0%  |
| 66  |           |                  | 99.0%  |
| 65  |           |                  | 99.0%  |
| 64  | 3         | ◆◆◆              | 98.0%  |
| 63  |           |                  | 95.0%  |
| 62  | 2         | ◆◆               | 95.0%  |
| 61  |           |                  | 93.0%  |
| 60  | 5         | ◆◆◆◆◆            | 93.0%  |
| 59  |           |                  | 88.0%  |
| 58  | 10        | ◆◆◆◆◆◆◆◆         | 88.0%  |
| 57  |           |                  | 78.0%  |
| 56  | 10        | ◆◆◆◆◆◆◆◆         | 78.0%  |
| 55  |           |                  | 68.0%  |
| 54  | 6         | ◆◆◆◆◆◆           | 68.0%  |
| 53  |           |                  | 62.0%  |
| 52  | 18        | ◆◆◆◆◆◆◆◆◆◆◆◆◆◆   | 62.0%  |
| 51  |           |                  | 44.0%  |
| 50  | 21        | ◆◆◆◆◆◆◆◆◆◆◆◆◆◆◆◆ | 44.0%  |
| 49  |           |                  | 23.0%  |
| 48  | 12        | ◆◆◆◆◆◆◆◆◆◆       | 23.0%  |
| 47  |           |                  | 11.0%  |
| 46  | 6         | ◆◆◆◆◆◆           | 11.0%  |
| 45  |           |                  | 5.0%   |
| 44  | 4         | ◆◆◆◆             | 5.0%   |
| 43  |           |                  | 1.0%   |
| 42  | 1         | ◆                | 1.0%   |
| 41  |           |                  | 0.0%   |
| 40  |           |                  | 0.0%   |
| 39  |           |                  | 0.0%   |
| 38  |           |                  | 0.0%   |
| 37  |           |                  | 0.0%   |
| 36  |           |                  | 0.0%   |
| 35  |           |                  | 0.0%   |
| 34  |           |                  | 0.0%   |
| 33  |           |                  | 0.0%   |
| 32  |           |                  | 0.0%   |
| 31  |           |                  | 0.0%   |
| 30  |           |                  | 0.0%   |
| 29  |           |                  | 0.0%   |
| 28  |           |                  | 0.0%   |
| 27  |           |                  | 0.0%   |
| 26  |           |                  | 0.0%   |
| 25  |           |                  | 0.0%   |
| 24  |           |                  | 0.0%   |
| 23  |           |                  | 0.0%   |
| 22  |           |                  | 0.0%   |
| 21  |           |                  | 0.0%   |
| 20  |           |                  | 0.0%   |

| MPH | No of Veh. |  | %       |
|-----|------------|--|---------|
| 85  |            |  | #DIV/0! |
| 84  |            |  | #DIV/0! |
| 83  |            |  | #DIV/0! |
| 82  |            |  | #DIV/0! |
| 81  |            |  | #DIV/0! |
| 80  |            |  | #DIV/0! |
| 79  |            |  | #DIV/0! |
| 78  |            |  | #DIV/0! |
| 77  |            |  | #DIV/0! |
| 76  |            |  | #DIV/0! |
| 75  |            |  | #DIV/0! |
| 74  |            |  | #DIV/0! |
| 73  |            |  | #DIV/0! |
| 72  |            |  | #DIV/0! |
| 71  |            |  | #DIV/0! |
| 70  |            |  | #DIV/0! |
| 69  |            |  | #DIV/0! |
| 68  |            |  | #DIV/0! |
| 67  |            |  | #DIV/0! |
| 66  |            |  | #DIV/0! |
| 65  |            |  | #DIV/0! |
| 64  |            |  | #DIV/0! |
| 63  |            |  | #DIV/0! |
| 62  |            |  | #DIV/0! |
| 61  |            |  | #DIV/0! |
| 60  |            |  | #DIV/0! |
| 59  |            |  | #DIV/0! |
| 58  |            |  | #DIV/0! |
| 57  |            |  | #DIV/0! |
| 56  |            |  | #DIV/0! |
| 55  |            |  | #DIV/0! |
| 54  |            |  | #DIV/0! |
| 53  |            |  | #DIV/0! |
| 52  |            |  | #DIV/0! |
| 51  |            |  | #DIV/0! |
| 50  |            |  | #DIV/0! |
| 49  |            |  | #DIV/0! |
| 48  |            |  | #DIV/0! |
| 47  |            |  | #DIV/0! |
| 46  |            |  | #DIV/0! |
| 45  |            |  | #DIV/0! |
| 44  |            |  | #DIV/0! |
| 43  |            |  | #DIV/0! |
| 42  |            |  | #DIV/0! |
| 41  |            |  | #DIV/0! |
| 40  |            |  | #DIV/0! |
| 39  |            |  | #DIV/0! |
| 38  |            |  | #DIV/0! |
| 37  |            |  | #DIV/0! |
| 36  |            |  | #DIV/0! |
| 35  |            |  | #DIV/0! |
| 34  |            |  | #DIV/0! |
| 33  |            |  | #DIV/0! |
| 32  |            |  | #DIV/0! |
| 31  |            |  | #DIV/0! |
| 30  |            |  | #DIV/0! |
| 29  |            |  | #DIV/0! |
| 28  |            |  | #DIV/0! |
| 27  |            |  | #DIV/0! |
| 26  |            |  | #DIV/0! |
| 25  |            |  | #DIV/0! |
| 24  |            |  | #DIV/0! |
| 23  |            |  | #DIV/0! |
| 22  |            |  | #DIV/0! |
| 21  |            |  | #DIV/0! |
| 20  |            |  | #DIV/0! |

