



**CITY OF REDDING
ENGINEERING AND TRAFFIC SURVEY
OF
EAST STREET**

FEBRUARY 28, 2007

For the determination of safe and reasonable speed zoning as required by Sections 22358 and 40802 of the California Vehicle Code (CVC), as defined by Section 627 of the CVC and in accordance with Section 2B. 13 of the California Manual on Uniform Traffic Control Devices, this Engineering and Traffic Survey (ETS) was initiated to verify or modify speed zones on East Street.

Based on the results of this ETS (attached) and adoption of Ordinance Number 2465 by the City Council of the City of Redding, amending Redding Municipal Code Section 11.12.010, a speed zone on East Street of 30 MPH from Trinity Street to Pine Street is established.

In accordance with Redding Municipal Code 11.08.010, appropriate signs giving notice of the above speed zoning shall be placed and the stated speed limit(s) shall be effective upon the placement of such signs.

Handwritten signature of Brian Crane in black ink, dated 3/26/2012.

**Brian Crane, P. E.
Director of Public Works**

ATTEST:

Handwritten signature of Pamela Mize in black ink, dated 3/26/12.
PAMELA MIZE, City Clerk

**EAST ST
FEBRUARY 2007
CONDITION SUMMARY**

FROM LOCATION TO	TRINITY SOUTH	SOUTH PINE	
NO. OF LANES	4	2	
WIDTH, FT. ROADWAY	56	56	
LENGTH, FT.	3015	1527	
HORIZONTAL ALIGNMENT	STRAIGHT	SOME CURVES	
VERTICAL	FLAT	ROLLING	
DISTRICT	BUS / RES	BUS / RES	
ADT	9,858	5,870	
PEDESTRIANS	SIGNIFICANT	FEW	
SIDEWALKS	100%	70%	
BIKE LANE/ROUTE	NO	NO	
DRIVEWAYS	NUMEROUS	NUMEROUS	
SPEED RELATED COLLISIONS	3 IN 2 YRS NOT SIGNIFICANT	NONE	
EXISTING SPEED ZONING, MPH	30	30	
10 MPH PACE RANGE	26 - 36	30 - 40	
85TH% SPEED	34	36	
SURVEY CONCLUSION			
REASONABLE SPEED, MPH	30	*30	
ACTION			
PUBLIC WORKS APPROVED	RMC 11.08.010	RMC 11.08.010	
SPEED POSTED	30 3/18/81	30 3/18/81	

ADDITIONAL
COMMENTS:

* A reduction in speed to match existing conditions with the traffic safety needs of the area



30 M.P.H.
SPEED ZONE

LEGEND

 SPEED LIMIT SIGN

CITY OF REDDING TRANSPORTATION & ENGINEERING DIVISION FEBRUARY 2007

EAST ST SPEED ZONE
TRINITY ST TO PINE ST



EAST ST S/ YUBA ST

Observer: Lori Lackey Calcs: Frank Hogue

Posted Speed: 30 Day: Thursday
 Date: 6/29/06
 Weather: Sunny & Dry Time: 09:15 - 09:50

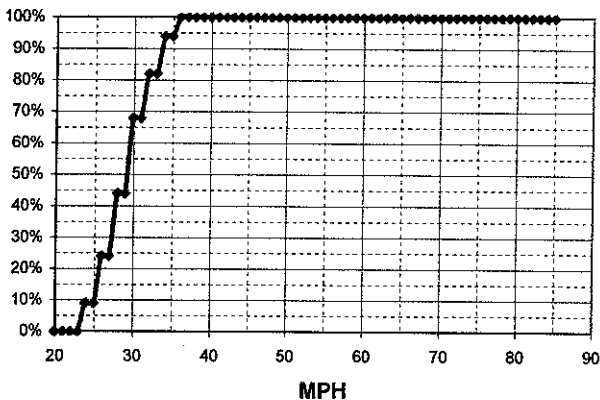
Critical Speed :	34	mph
Average Speed :	29.6	mph
Median Speed :	30	mph
Standard Deviation:	3.3	mph
Pace Range :	26 - 36	mph
Percent in Pace :	85.0%	
Total # Vehicles :	100	

Critical Speed :	#DIV/0!	mph
Average Speed :	#DIV/0!	mph
Median Speed :	#NAME?	mph
Standard Deviation:	#DIV/0!	mph
Pace Range :	#DIV/0!	mph
Percent in Pace :	#DIV/0!	
Total # Vehicles :	0	

MPH	# of Veh.	Both Directions	%
85			100.0%
84			100.0%
83			100.0%
82			100.0%
81			100.0%
80			100.0%
79			100.0%
78			100.0%
77			100.0%
76			100.0%
75			100.0%
74			100.0%
73			100.0%
72			100.0%
71			100.0%
70			100.0%
69			100.0%
68			100.0%
67			100.0%
66			100.0%
65			100.0%
64			100.0%
63			100.0%
62			100.0%
61			100.0%
60			100.0%
59			100.0%
58			100.0%
57			100.0%
56			100.0%
55			100.0%
54			100.0%
53			100.0%
52			100.0%
51			100.0%
50			100.0%
49			100.0%
48			100.0%
47			100.0%
46			100.0%
45			100.0%
44			100.0%
43			100.0%
42			100.0%
41			100.0%
40			100.0%
39			100.0%
38			100.0%
37	6	◆◆◆◆◆◆	100.0%
36			100.0%
35			94.0%
34	12	◆◆◆◆◆◆◆◆◆◆	84.0%
33			82.0%
32	14	◆◆◆◆◆◆◆◆◆◆◆◆	82.0%
31			68.0%
30	2	◆◆	68.0%
29			44.0%
28	20	◆◆◆◆◆◆◆◆◆◆◆◆◆◆◆◆	44.0%
27			24.0%
26	15	◆◆◆◆◆◆◆◆◆◆◆◆◆◆	24.0%
25			9.0%
24	9	◆◆◆◆◆◆◆◆◆◆	9.0%
23			0.0%
22			0.0%
21			0.0%
20			0.0%

MPH	No of Veh.		%
85			#DIV/0!
84			#DIV/0!
83			#DIV/0!
82			#DIV/0!
81			#DIV/0!
80			#DIV/0!
79			#DIV/0!
78			#DIV/0!
77			#DIV/0!
76			#DIV/0!
75			#DIV/0!
74			#DIV/0!
73			#DIV/0!
72			#DIV/0!
71			#DIV/0!
70			#DIV/0!
69			#DIV/0!
68			#DIV/0!
67			#DIV/0!
66			#DIV/0!
65			#DIV/0!
64			#DIV/0!
63			#DIV/0!
62			#DIV/0!
61			#DIV/0!
60			#DIV/0!
59			#DIV/0!
58			#DIV/0!
57			#DIV/0!
56			#DIV/0!
55			#DIV/0!
54			#DIV/0!
53			#DIV/0!
52			#DIV/0!
51			#DIV/0!
50			#DIV/0!
49			#DIV/0!
48			#DIV/0!
47			#DIV/0!
46			#DIV/0!
45			#DIV/0!
44			#DIV/0!
43			#DIV/0!
42			#DIV/0!
41			#DIV/0!
40			#DIV/0!
39			#DIV/0!
38			#DIV/0!
37			#DIV/0!
36			#DIV/0!
35			#DIV/0!
34			#DIV/0!
33			#DIV/0!
32			#DIV/0!
31			#DIV/0!
30			#DIV/0!
29			#DIV/0!
28			#DIV/0!
27			#DIV/0!
26			#DIV/0!
25			#DIV/0!
24			#DIV/0!
23			#DIV/0!
22			#DIV/0!
21			#DIV/0!
20			#DIV/0!

Cumulative Speeds



Cumulative Speeds

