




**CITY OF REDDING  
ENGINEERING AND TRAFFIC SURVEY  
OF  
TWIN VIEW BOULEVARD**

**FEBRUARY 28, 2007**

For the determination of safe and reasonable speed zoning as required by Sections 22358 and 40802 of the California Vehicle Code (CVC), as defined by Section 627 of the CVC and in accordance with Section 2B. 13 of the California Manual on Uniform Traffic Control Devices, this Engineering and Traffic Survey (ETS) was initiated to verify or modify speed zones on Twin View Boulevard.

Based on the results of this ETS (attached) and adoption of Ordinance Number 2465 by the City Council of the City of Redding, amending Redding Municipal Code Section 11.12.010, a speed zone on Twin View Boulevard of 40 MPH from State Route 273 to the City Limits is established.

In accordance with Redding Municipal Code 11.08.010, appropriate signs giving notice of the above speed zoning shall be placed and the stated speed limit(s) shall be effective upon the placement of such signs.

  
\_\_\_\_\_  
Brian Crane, P. E.  
Director of Public Works

ATTEST:

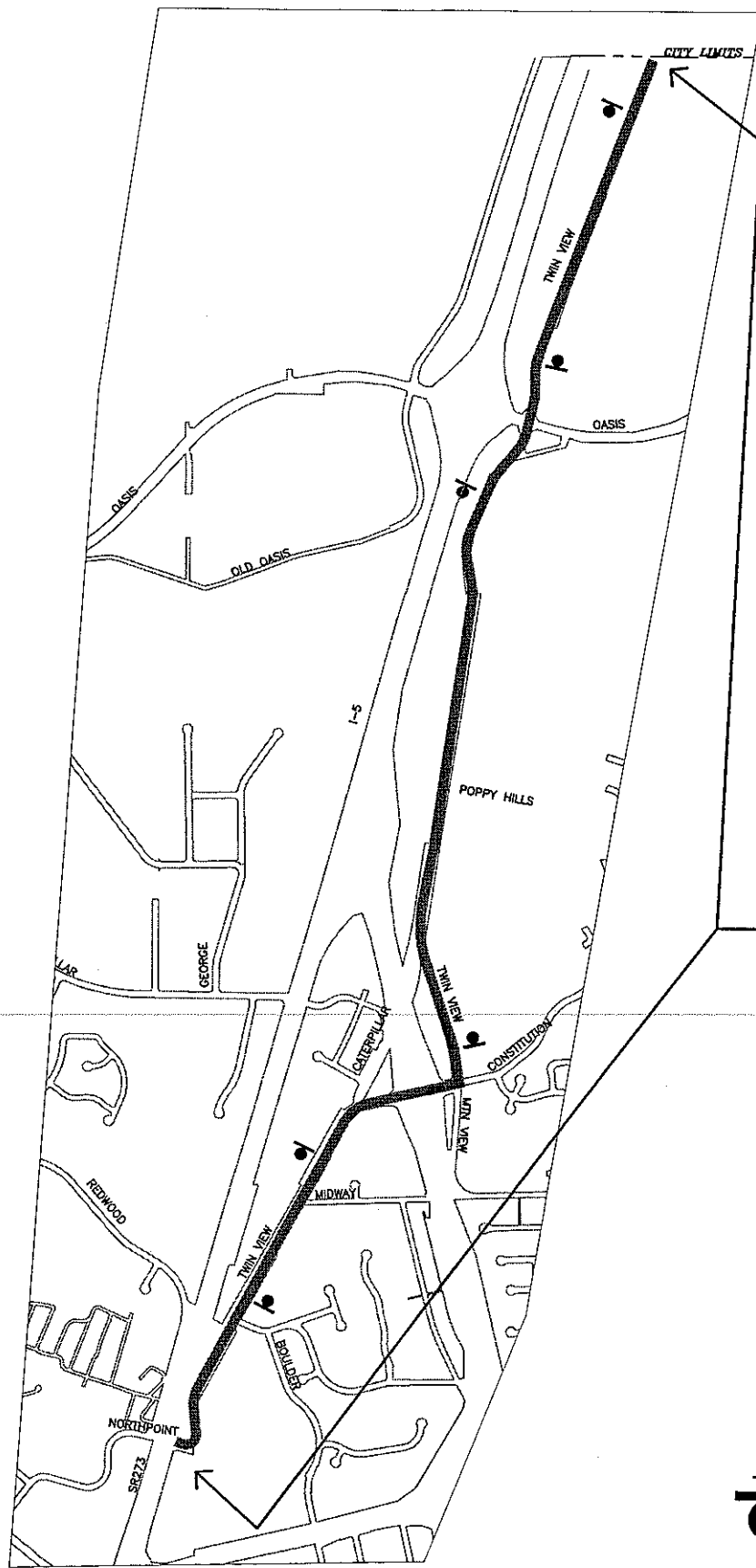
  
\_\_\_\_\_  
PAMELA MIZE, City Clerk

**TWIN VIEW BLVD  
FEBRUARY 2007  
CONDITION SUMMARY**

FROM LOCATION TO	SR 273 CONSTITUTION	CONSTITUTION CITY LIMITS	
NO. OF LANES	2	4	
WIDTH, FT. ROADWAY	VARIES	VARIES	
LENGTH, FT.	5000	2.01 MI.	
HORIZONTAL ALIGNMENT	CURVES	SOME CURVES	
VERTICAL	ROLLING	ROLLING	
DISTRICT	BUSINESS	BUSINESS	
ADT	6,351	1,738	
PEDESTRIANS	FEW	FEW	
SIDEWALKS	40%	5%	
BIKE LANE/ROUTE	NO	BIKE ROUTE	
DRIVEWAYS	NUMEROUS	NUMEROUS	
SPEED RELATED COLLISIONS	3 IN 2 YRS NOT SIGNIFICANT	1 IN 2 YRS NOT SIGNIFICANT	
EXISTING SPEED ZONING, MPH	40	40	
10 MPH PACE RANGE	34 - 44	38 - 48	
85TH% SPEED	42	48	
<b>SURVEY CONCLUSION</b>			
REASONABLE SPEED, MPH	40	*40	
<b>ACTION</b>			
PUBLIC WORKS APPROVED	RMC 11.08.010	RMC 11.08.010	
SPEED POSTED	40 3/18/83	40 3/18/83	

ADDITIONAL  
COMMENTS:

\*Due to many commercial business driveways, narrow bridges and narrow shoulders, and bike route.



40 M.P.H.  
SPEED ZONE

LEGEND

 SPEED LIMIT SIGN

CITY OF REDDING TRANSPORTATION & ENGINEERING DIVISION FEBRUARY 2007

**TWIN VIEW BLVD SPEED ZONE**  
SR 273 TO CITY LIMTS



TWIN VIEW BLVD S/ MIDWAY DR

Observer: Lori Lackey

Calcs: Frank Hogue

Posted Speed: 40  
Weather: Sunny & Dry

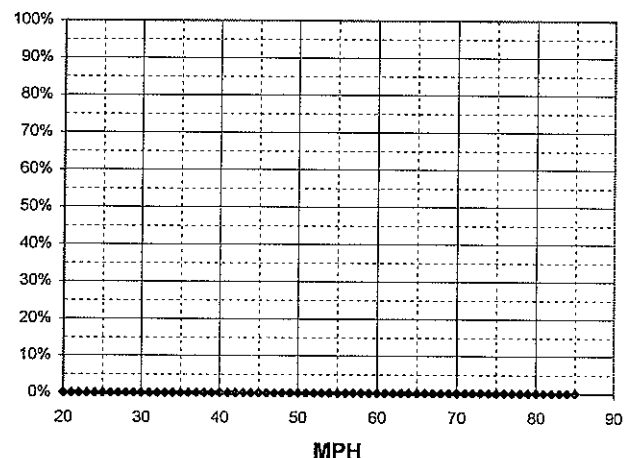
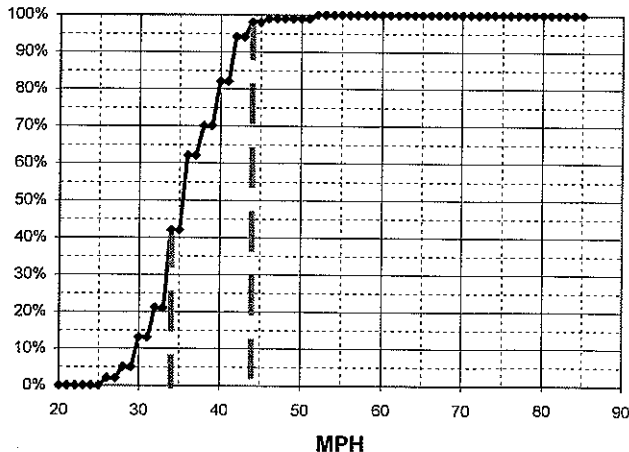
Day: Thursday  
Date: 6/8/06  
Time: 08:30 - 09:15

Critical Speed :	42	mph
Average Speed :	36.3	mph
Median Speed :	36	mph
Standard Deviation:	4.6	mph
Pace Range :	34 - 44	mph
Percent in Pace :	73.0%	
Total # Vehicles :	100	

Critical Speed :	#DIV/0!	mph
Average Speed :	#DIV/0!	mph
Median Speed :	0	mph
Standard Deviation:	#DIV/0!	mph
Pace Range :	#DIV/0!	mph
Percent in Pace :	#DIV/0!	
Total # Vehicles :	0	

MPH	# of Veh.	Both Directions	%
85			100.0%
84			100.0%
83			100.0%
82			100.0%
81			100.0%
80			100.0%
79			100.0%
78			100.0%
77			100.0%
76			100.0%
75			100.0%
74			100.0%
73			100.0%
72			100.0%
71			100.0%
70			100.0%
69			100.0%
68			100.0%
67			100.0%
66			100.0%
65			100.0%
64			100.0%
63			100.0%
62			100.0%
61			100.0%
60			100.0%
59			100.0%
58			100.0%
57			100.0%
56			100.0%
55			100.0%
54			100.0%
53	1	◆	100.0%
52			100.0%
51			99.0%
50			99.0%
49			99.0%
48			99.0%
47	1	◆	99.0%
46			99.0%
45			98.0%
44	4	◆◆◆◆	98.0%
43			94.0%
42	12	◆◆◆◆◆◆◆◆◆◆◆◆	94.0%
41			82.0%
40	12	◆◆◆◆◆◆◆◆◆◆◆◆	82.0%
39			70.0%
38	8	◆◆◆◆◆◆◆◆	70.0%
37			62.0%
36	20	◆◆◆◆◆◆◆◆◆◆◆◆◆◆◆◆◆◆	62.0%
35			42.0%
34	21	◆◆◆◆◆◆◆◆◆◆◆◆◆◆◆◆◆◆◆◆	42.0%
33			21.0%
32	8	◆◆◆◆◆◆◆◆	21.0%
31			13.0%
30	8	◆◆◆◆◆◆◆◆	13.0%
29			5.0%
28	3	◆◆◆	5.0%
27			2.0%
26	2	◆◆	2.0%
25			0.0%
24			0.0%
23			0.0%
22			0.0%
21			0.0%
20			0.0%

MPH	No of Veh.		%
85			#DIV/0!
84			#DIV/0!
83			#DIV/0!
82			#DIV/0!
81			#DIV/0!
80			#DIV/0!
79			#DIV/0!
78			#DIV/0!
77			#DIV/0!
76			#DIV/0!
75			#DIV/0!
74			#DIV/0!
73			#DIV/0!
72			#DIV/0!
71			#DIV/0!
70			#DIV/0!
69			#DIV/0!
68			#DIV/0!
67			#DIV/0!
66			#DIV/0!
65			#DIV/0!
64			#DIV/0!
63			#DIV/0!
62			#DIV/0!
61			#DIV/0!
60			#DIV/0!
59			#DIV/0!
58			#DIV/0!
57			#DIV/0!
56			#DIV/0!
55			#DIV/0!
54			#DIV/0!
53			#DIV/0!
52			#DIV/0!
51			#DIV/0!
50			#DIV/0!
49			#DIV/0!
48			#DIV/0!
47			#DIV/0!
46			#DIV/0!
45			#DIV/0!
44			#DIV/0!
43			#DIV/0!
42			#DIV/0!
41			#DIV/0!
40			#DIV/0!
39			#DIV/0!
38			#DIV/0!
37			#DIV/0!
36			#DIV/0!
35			#DIV/0!
34			#DIV/0!
33			#DIV/0!
32			#DIV/0!
31			#DIV/0!
30			#DIV/0!
29			#DIV/0!
28			#DIV/0!
27			#DIV/0!
26			#DIV/0!
25			#DIV/0!
24			#DIV/0!
23			#DIV/0!
22			#DIV/0!
21			#DIV/0!
20			#DIV/0!



TWIN VIEW BLVD N/ POPPY HILLDS DR

Observer: Lori Lackey

Calcs: Frank Hogue

Posted Speed: 40  
Weather: Sunny & Dry

Day: Wednesday  
Date: 6/7/06  
Time: 10:20 - 11:20

Critical Speed :	48	mph
Average Speed :	41.9	mph
Median Speed :	42	mph
Standard Deviation:	5.8	mph
Pace Range :	38 - 48	mph
Percent in Pace :	67.5%	
Total # Vehicles :	83	

Critical Speed :	#DIV/0!	mph
Average Speed :	#DIV/0!	mph
Median Speed :	0	mph
Standard Deviation:	#DIV/0!	mph
Pace Range :	#DIV/0!	mph
Percent in Pace :	#DIV/0!	
Total # Vehicles :	0	

MPH	# of Veh.	Both Directions	%
85			100.0%
84			100.0%
83			100.0%
82			100.0%
81			100.0%
80			100.0%
79			100.0%
78			100.0%
77			100.0%
76			100.0%
75			100.0%
74			100.0%
73			100.0%
72			100.0%
71			100.0%
70			100.0%
69			100.0%
68			100.0%
67			100.0%
66			100.0%
65			100.0%
64	1	◆	100.0%
63			98.8%
62			98.8%
61			98.8%
60			98.8%
59			98.8%
58			98.8%
57	1	◆	98.8%
56			98.8%
55			97.8%
54	1	◆	97.8%
53			96.4%
52	2	◆◆	96.4%
51			94.0%
50	4	◆◆◆◆	94.0%
49			89.2%
48	5	◆◆◆◆◆	89.2%
47			83.1%
46	6	◆◆◆◆◆◆	83.1%
45			75.9%
44	8	◆◆◆◆◆◆◆◆	75.9%
43			66.3%
42	18	◆◆◆◆◆◆◆◆◆◆◆◆◆◆◆◆	66.3%
41			44.6%
40	14	◆◆◆◆◆◆◆◆◆◆◆◆◆◆◆◆	44.6%
39			27.7%
38	10	◆◆◆◆◆◆◆◆◆◆	27.7%
37			15.7%
36	3	◆◆◆	15.7%
35			12.0%
34	6	◆◆◆◆◆◆	12.0%
33			4.8%
32	1	◆	4.8%
31			3.6%
30	3	◆◆◆	3.6%
29			0.0%
28			0.0%
27			0.0%
26			0.0%
25			0.0%
24			0.0%
23			0.0%
22			0.0%
21			0.0%
20			0.0%

MPH	No of Veh.	%
85		#DIV/0!
84		#DIV/0!
83		#DIV/0!
82		#DIV/0!
81		#DIV/0!
80		#DIV/0!
79		#DIV/0!
78		#DIV/0!
77		#DIV/0!
76		#DIV/0!
75		#DIV/0!
74		#DIV/0!
73		#DIV/0!
72		#DIV/0!
71		#DIV/0!
70		#DIV/0!
69		#DIV/0!
68		#DIV/0!
67		#DIV/0!
66		#DIV/0!
65		#DIV/0!
64		#DIV/0!
63		#DIV/0!
62		#DIV/0!
61		#DIV/0!
60		#DIV/0!
59		#DIV/0!
58		#DIV/0!
57		#DIV/0!
56		#DIV/0!
55		#DIV/0!
54		#DIV/0!
53		#DIV/0!
52		#DIV/0!
51		#DIV/0!
50		#DIV/0!
49		#DIV/0!
48		#DIV/0!
47		#DIV/0!
46		#DIV/0!
45		#DIV/0!
44		#DIV/0!
43		#DIV/0!
42		#DIV/0!
41		#DIV/0!
40		#DIV/0!
39		#DIV/0!
38		#DIV/0!
37		#DIV/0!
36		#DIV/0!
35		#DIV/0!
34		#DIV/0!
33		#DIV/0!
32		#DIV/0!
31		#DIV/0!
30		#DIV/0!
29		#DIV/0!
28		#DIV/0!
27		#DIV/0!
26		#DIV/0!
25		#DIV/0!
24		#DIV/0!
23		#DIV/0!
22		#DIV/0!
21		#DIV/0!
20		#DIV/0!

